

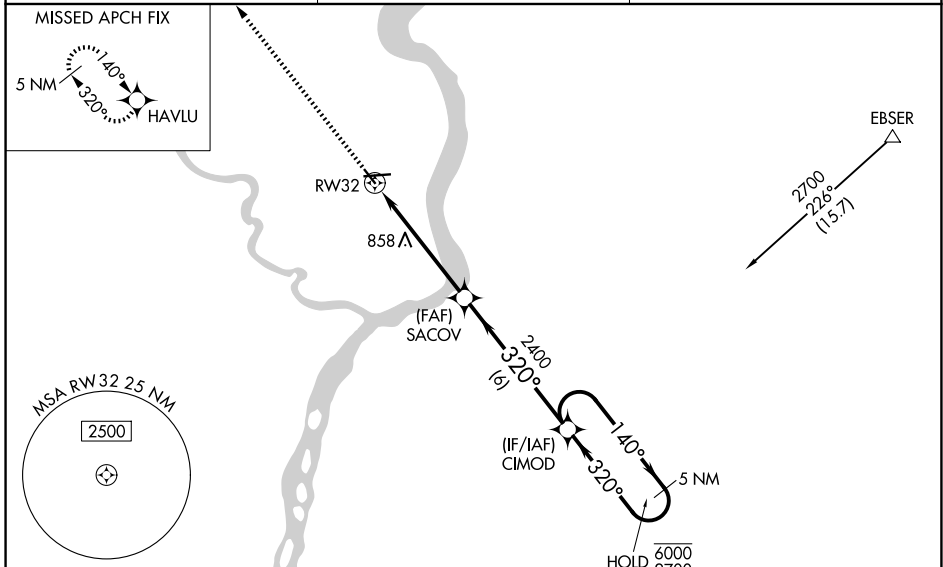
WAAS CH 40005 W32A	APP CRS 320°	Rwy Ldg TDZE Apt Elev	3576 672 672
--	------------------------	-----------------------------	---

RNAV (GPS) RWY 32

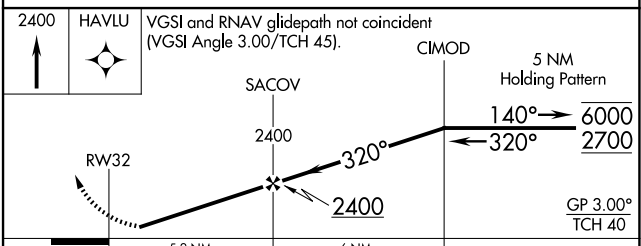
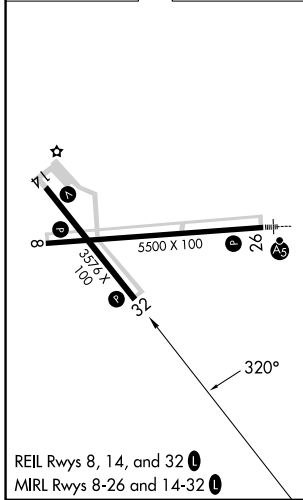
KEOKUK MUNI (EOK)

RNP APCH - GPS.	MISSED APPROACH: Climb to 2400 direct HAVLU and hold.
<p>Procedure NA at night. Rwy 32 helicopter visibility reduction below 1 SM NA.</p> <p>Baro-VNAV NA when using Burlington altimeter setting. For uncompensated Baro-VNAV systems, LNAV/VNAV NA below -16°C or above 54°C. When local altimeter setting not received, use Burlington altimeter setting: increase LPV DA to 978 feet; increase LNAV/VNAV DA to 1220 feet and all visibilities ¼ SM. Increase all MDAs 60 feet visibility Cat C visibility ¼ SM.</p>	

AWOS-3 118.375	KANSAS CITY CENTER 126.225 317.775	UNICOM 122.8 (CTAF) ①
--------------------------	--	---------------------------------



ELEV 672	TDZE 672
----------	----------



CATEGORY	A	B	C	D
LPV DA	922-1 250 (300-1)			NA
LNAV/VNAV DA	1164-1⅜ 492 (500-1⅜)			NA
LNAV MDA	1160-1	488 (500-1)	1160-1⅜ 488 (500-1⅜)	NA
CIRCLING	1180-1 508 (600-1)	1220-1 548 (600-1)	1220-1½ 548 (600-1½)	NA

NC-3, 14 MAY 2026 to 11 JUN 2026

NC-3, 14 MAY 2026 to 11 JUN 2026