

WAAS CH 58229 W23A	APP CRS 232°	Rwy Ldg TDZE Apt Elev	3994 770 790
--	------------------------	-----------------------------	---

RNAV (GPS) RWY 23

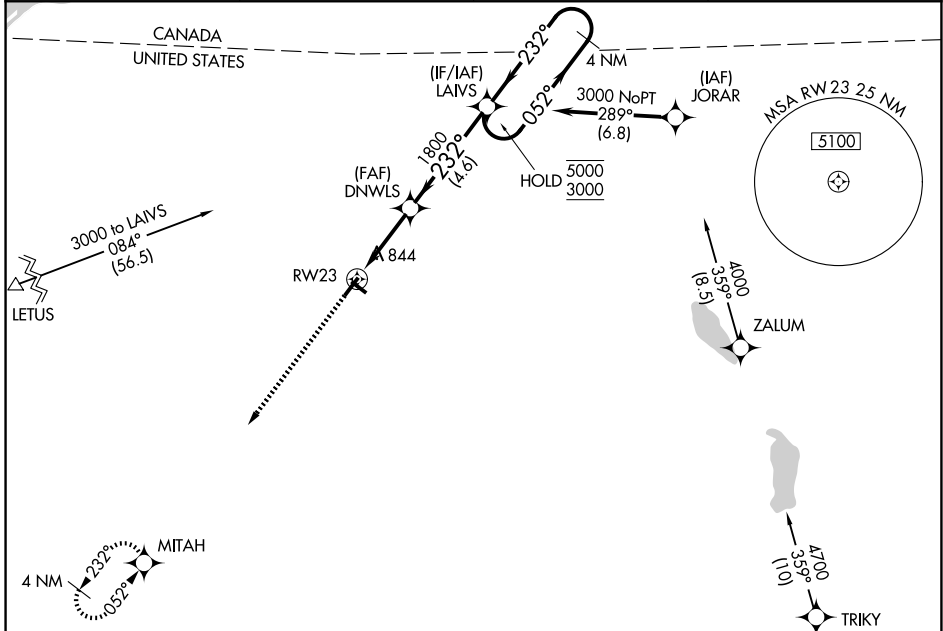
MALONE-DUFORT (MAL)

RNP APCH - GPS.

⚠ Circling Rwy 5 NA at night. Baro-VNAV NA. Use Massena Intl-Richards Fld altimeter setting; when not received, use Adirondack Rgnl altimeter setting and increase LPV DA to 1208 feet; increase LNAV/VNAV DA to 1316 feet; increase all MDAs 60 feet. Increase LPV all Cats visibility $\frac{1}{8}$ SM, LNAV/VNAV all Cats $\frac{1}{4}$ SM, LNAV Cat C $\frac{1}{8}$ SM and Circling Cat C visibility $\frac{1}{4}$ SM.

⚠ MISSED APPROACH: Climb to 3600 direct MITAH and hold.

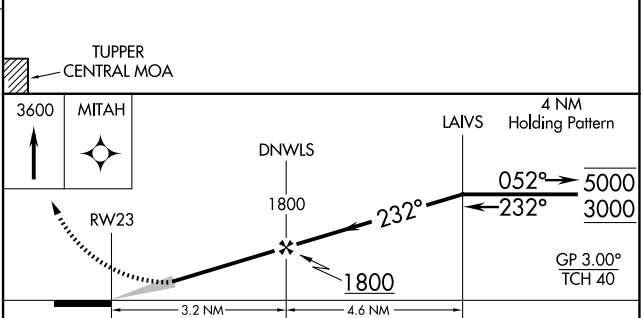
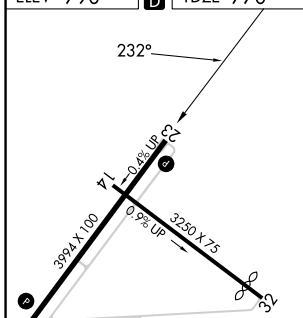
AWOS-AV 122.8	MSS ASOS 128.075	BOSTON CENTER 135.25 377.1	UNICOM 122.8 (CTAF) 0
-------------------------	----------------------------	--------------------------------------	---------------------------------



NE-2, 14 MAY 2026 to 11 JUN 2026

NE-2, 14 MAY 2026 to 11 JUN 2026

ELEV 790	D	TDZE 770
----------	----------	----------



CATEGORY	A	B	C	D
LPV DA	1155-1 $\frac{1}{8}$	385 (400-1 $\frac{1}{8}$)		NA
LNAV/VNAV DA	1263-1 $\frac{3}{8}$	493 (500-1 $\frac{3}{8}$)		NA
LNAV MDA	1240-1	470 (500-1)	1240-1 $\frac{3}{8}$ 470 (500-1 $\frac{3}{8}$)	NA
CIRCLING	1460-1 670 (700-1)	1520-1 730 (800-1)	1720-2 $\frac{3}{4}$ 930 (1000-2 $\frac{3}{4}$)	NA