

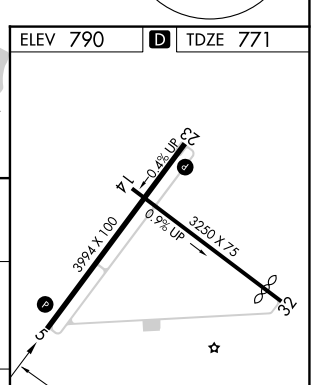
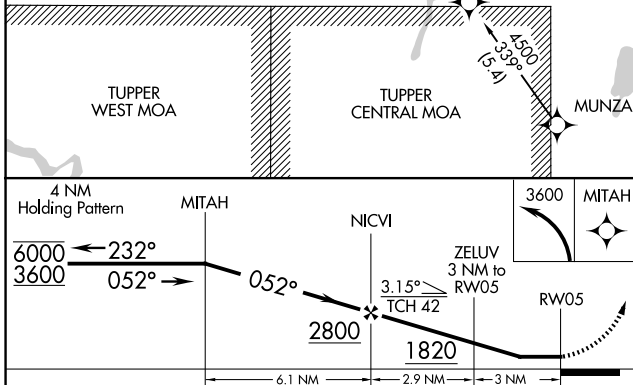
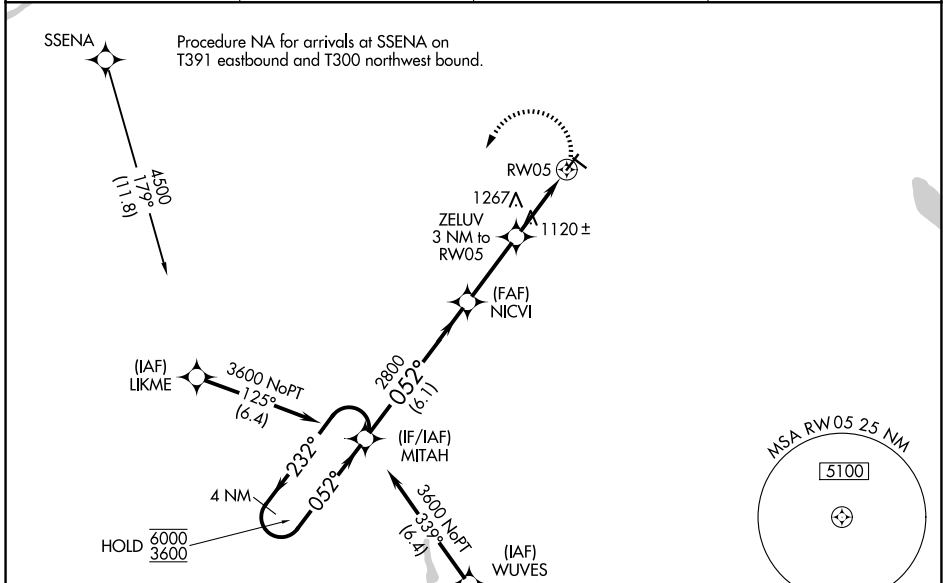
WAAS CH 93729 W05A	APP CRS 052°	Rwy Ldg TDZE Apt Elev	3994 771 790
--	------------------------	-----------------------------	---

RNAV (GPS) RWY 5

MALONE-DUFORT (MAL)

RNP APCH.	<p>Rwy 5 helicopter visibility reduction below 1 SM NA. Use Massena Intl-Richards fld altimeter setting; when not received, use Adirondack Rgnl altimeter setting and increase all MDA 60 feet and increase LP Cat C visibility ½ SM and Circling Cat A and C visibility ¼ SM. Straight-in and Circling Rwy 5 NA at night.</p>	<p>MISSED APPROACH: Climbing left turn to 3600 direct MITAH and hold.</p>
-----------	--	---

AWOS-AV 122.8	MSS ASOS 128.075	BOSTON CENTER 135.25 377.1	UNICOM 122.8 (CTAF)
-------------------------	----------------------------	--------------------------------------	-------------------------------



CATEGORY	A	B	C	D
LP MDA	1520-1 749 (800-1)	1520-1¼ 749 (800-1¼)	1520-2 749 (800-2)	NA
LNAV MDA	1580-1 809 (800-1)	1580-1¼ 809 (800-1¼)	1580-2½ 809 (800-2½)	NA
CIRCLING	1580-1 790 (800-1)	1580-1¼ 790 (800-1¼)	1720-2¾ 930 (1000-2¾)	NA

ELEV 790 **D** TDZE 771

REIL Rwy 5 and 23
MIRL Rwy 5-23 and 14-32

NE-2, 14 MAY 2026 to 11 JUN 2026

NE-2, 14 MAY 2026 to 11 JUN 2026