

| | | | |
|--|------------------------|-----------------------------|---|
| WAAS CH 86729 W14A | APP CRS 144° | Rwy Ldg TDZE Apt Elev | 4200 701 708 |
|--|------------------------|-----------------------------|---|

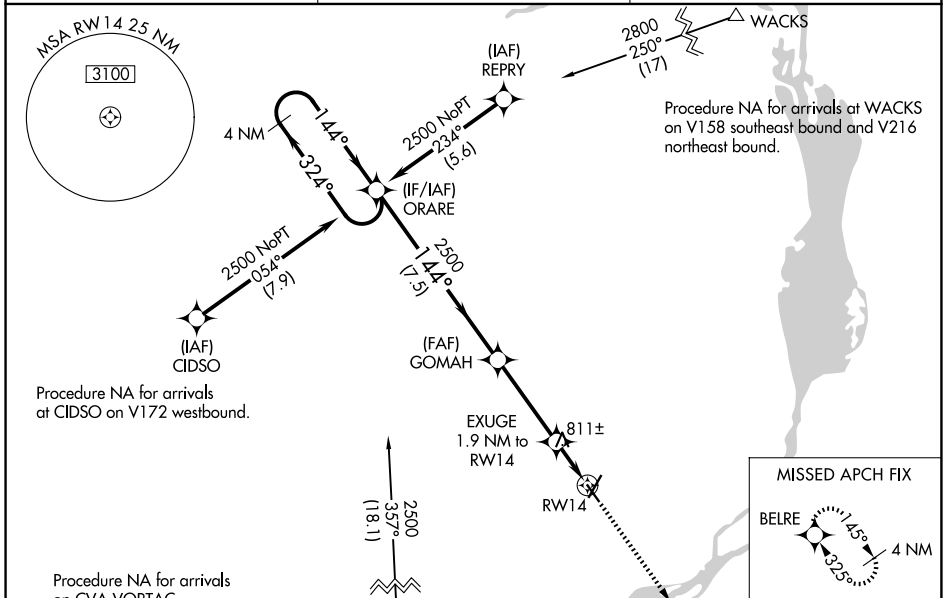
RNAV (GPS) RWY 14

CLINTON MUNI (CWI)

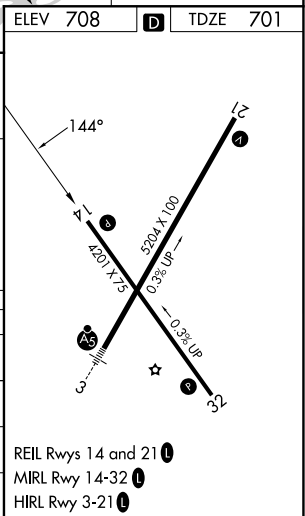
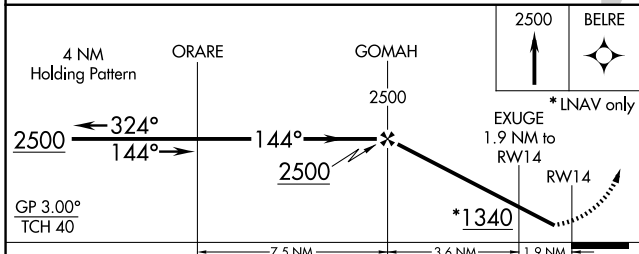
⚠ Rwy 14 helicopter visibility reduction below 3/4 SM NA. Baro-VNAV NA when using Davenport altimeter setting. For uncompensated Baro-VNAV systems, LNAV/VNAV NA below -16°C (4°F) or above 54°C (130°F). DME/DME RNP-0.3 NA. When local altimeter setting not received, use Davenport altimeter setting and increase all DA 47 feet and all MDA 60 feet; increase LNAV visibility Cat C 1/4 mile.

MISSED APPROACH:
Climb to 2500 direct BELRE and hold.

| | | |
|----------------------------|--|--|
| AWOS-3PT 125.525 | QUAD CITY APP CON * 125.95 257.8 | UNICOM 123.075 (CTAF) 📻 |
|----------------------------|--|--|



| | | |
|----------|----------|----------|
| ELEV 708 | D | TDZE 701 |
|----------|----------|----------|



| CATEGORY | A | B | C | D |
|--------------|-----------------------|-----------------------|-------------------------|----|
| LPV DA | | 951-1 250 (300-1) | | NA |
| LNAV/VNAV DA | | 968-1 267 (300-1) | | NA |
| LNAV MDA | | 1080-1 379 (400-1) | | NA |
| CIRCLING | 1140-1 432 (500-1) | 1240-1 532 (600-1) | 1240-1½ 532 (600-1½) | NA |

NC-3, 14 MAY 2026 to 11 JUN 2026

NC-3, 14 MAY 2026 to 11 JUN 2026