

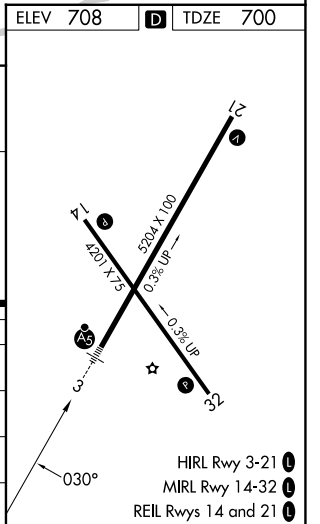
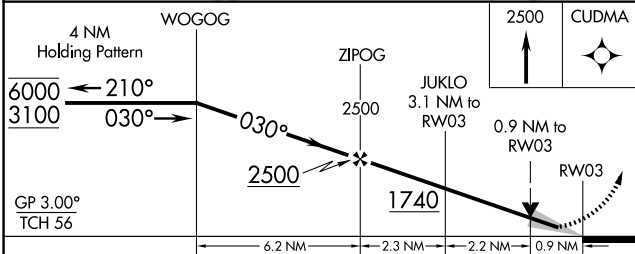
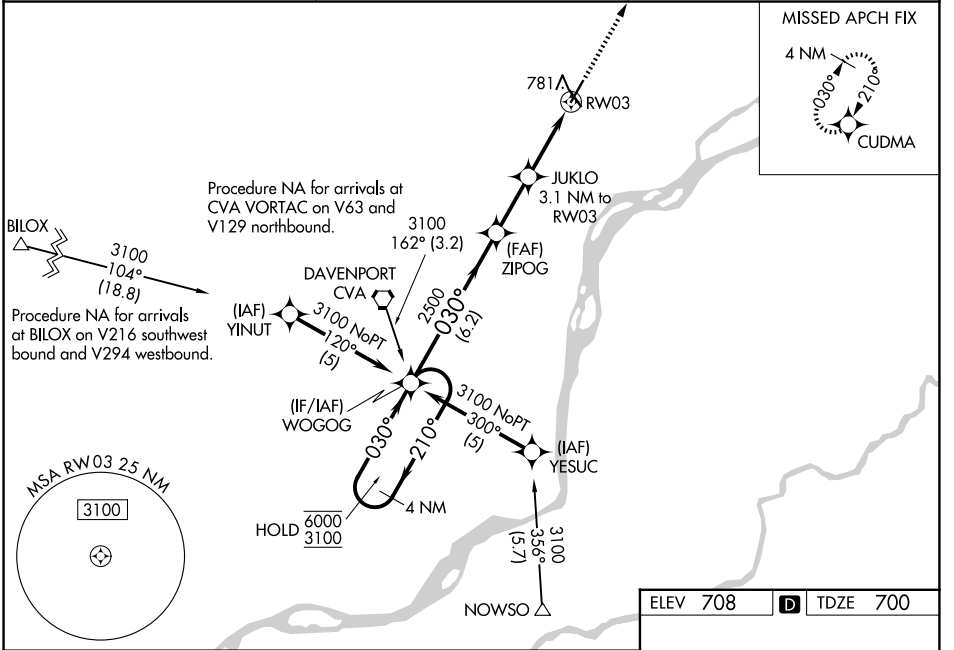
| | | | |
|--|------------------------|-----------------------------|---|
| WAAS CH 69610 W03A | APP CRS 030° | Rwy Ldg TDZE Apt Elev | 5204 700 708 |
|--|------------------------|-----------------------------|---|

RNAV (GPS) RWY 3

CLINTON MUNI (CWI)

| | | |
|--|-------|---|
| RNP APCH - GPS. | MALSR | MISSED APPROACH: Climb to 2500 direct CUDMA and hold. |
| <p>⚠ For uncompensated Baro-VNAV systems, LNAV/VNAV NA below -1.6°C or above 54°C. Baro-VNAV and VDP NA when using DVN altimeter setting. When local altimeter setting not received, use DVN altimeter setting and increase LPV DA to 947 feet; increase LNAV/VNAV DA to 1086 feet and all visibilities 1/8 SM. Increase all MDAs 60 feet and LNAV visibility Cat C 1/8 SM.</p> | | |

| | | |
|----------------------------|---|-----------------------------------|
| AWOS-3PT 125.525 | QUAD CITY APP CON* 125.95 257.8 | UNICOM 123.075 (CTAF) 0 |
|----------------------------|---|-----------------------------------|



| CATEGORY | A | B | C | D |
|--------------|-----------------------|-----------------------|-------------------------------|----|
| LPV DA | 900-1/2 | 200 (200-1/2) | | NA |
| LNAV/VNAV DA | 1039-1/2 | 339 (400-1/2) | | NA |
| LNAV MDA | 1040-1/2 | 340 (400-1/2) | | NA |
| CIRCLING | 1140-1 432 (500-1) | 1240-1 532 (600-1) | 1240-1 1/2 532 (600-1 1/2) | NA |

NC-3, 14 MAY 2026 to 11 JUN 2026

NC-3, 14 MAY 2026 to 11 JUN 2026