

WAAS CH <b>60916</b> <b>W29A</b>	APP CRS <b>286°</b>	Rwy Ldg TDZE Apt Elev	<b>7504</b> <b>122</b> <b>151</b>
--	------------------------	-----------------------------	---

# RNAV (GPS) RWY 29

GAINESVILLE RGNL (G.V.)

RNP APCH - GPS.

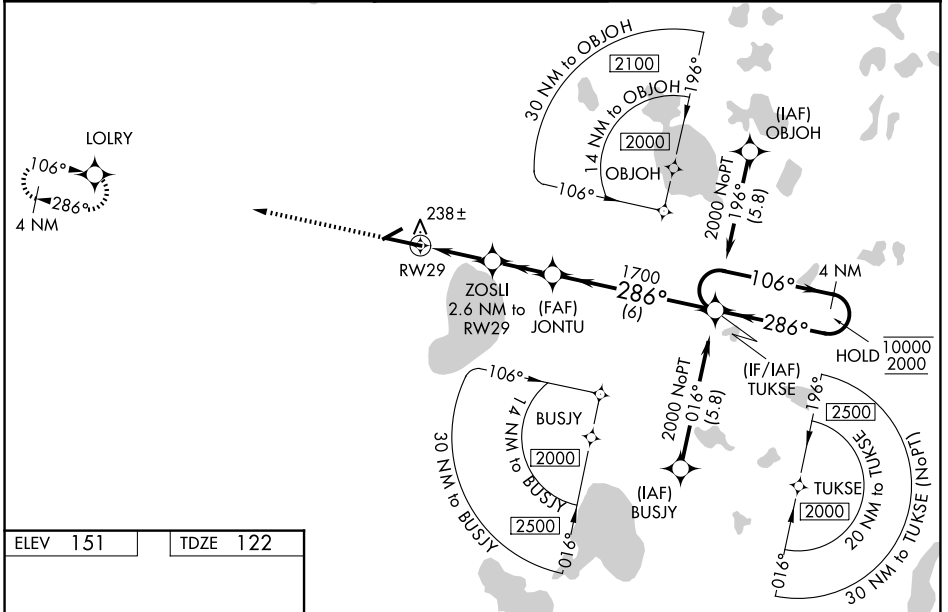
▼ For uncompensated Baro-VNAV systems, LNAV/VNAV NA below -3°C or above 54°C.  
 ▲ Baro-VNAV and VDP NA when using OCF altimeter setting. When local altimeter setting not received, use OCF altimeter setting and increase LPV DA to 403 feet; increase LNAV/VNAV DA to 488 feet and all visibilities to RVR 3500. Increase all MDAs 100 feet and LNAV visibility Cat C/D to RVR 5000, and Circling visibility Cat C/D ½ SM. For inop ALS, increase LNAV/VNAV all Cats visibility to RVR 4500 and LNAV Cats C and D visibility to RVR 5500. For inop ALS when using OCF altimeter setting, increase LPV all Cats visibility to RVR 4500, LNAV/VNAV all Cats visibility to RVR 5500, and LNAV visibility Cat C/D to 1 ½ SM.

MALSR

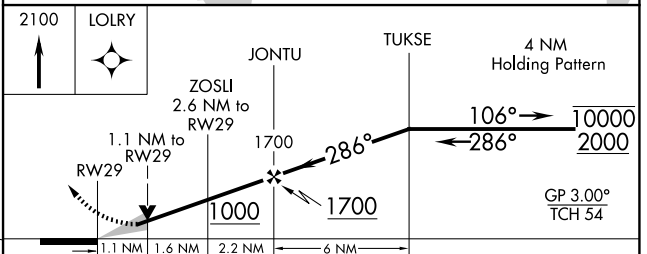
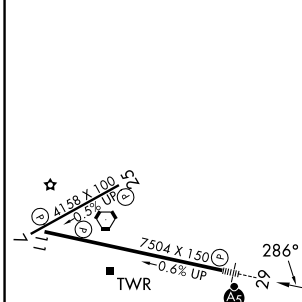


MISSED APPROACH:  
Climb to 2100 direct LOLRY and hold.

ATIS <b>127.15</b>	JACKSONVILLE APP CON <b>118.175 338.25</b>	GAINESVILLE TOWER ★ <b>119.55</b> (CTAF) <b>0 353.7</b>	GND CON <b>121.7</b>	UNICOM <b>122.95</b>
-----------------------	---	--	-------------------------	-------------------------



ELEV 151	TDZE 122
----------	----------



CATEGORY	A	B	C	D
LPV DA		322/24	200 (200-½)	
LNAV/VNAV DA		407/24	285 (300-½)	
LNAV MDA	500/24	378 (400-½)	500/35	378 (400-½)
CIRCLING	620-1 469 (500-1)	700-1 549 (600-1)	760-1¾ 609 (700-1¾)	820-2 669 (700-2)

REIL Rwy 11  
MIRL Rwy 7-25  
HIRL Rwy 11-29

SE-3, 14 MAY 2026 to 11 JUN 2026

SE-3, 14 MAY 2026 to 11 JUN 2026