

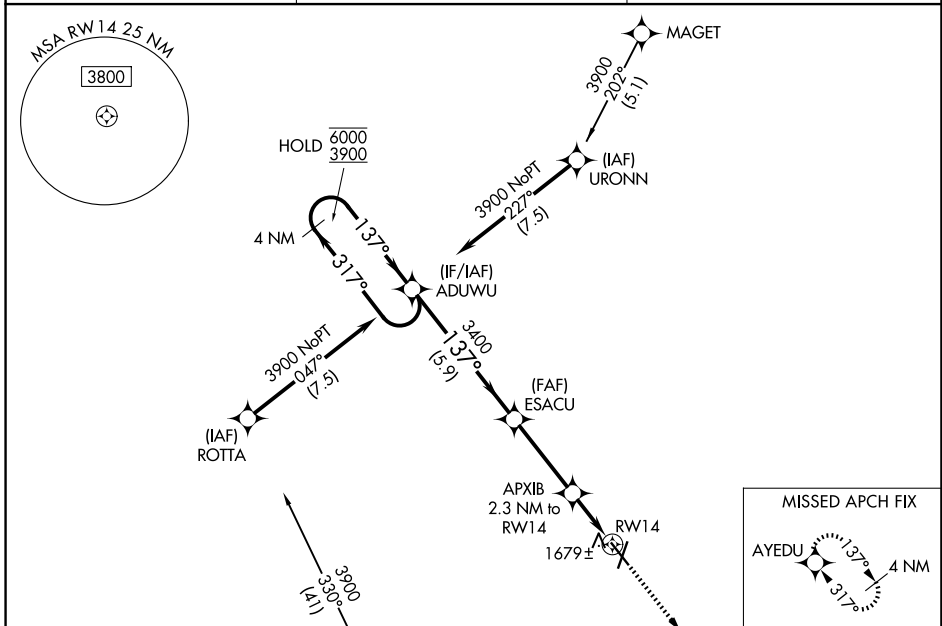
WAAS CH <b>62915</b> <b>W14A</b>	APP CRS <b>137°</b>	Rwy Ldg TDZE Apt Elev	<b>5160</b> <b>1543</b> <b>1573</b>
--	------------------------	-----------------------------	---

# RNAV (GPS) RWY 14

NORFOLK RGNL/KARL STEFAN MEML FLD (OFK)

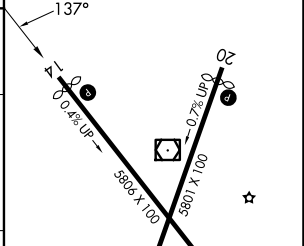
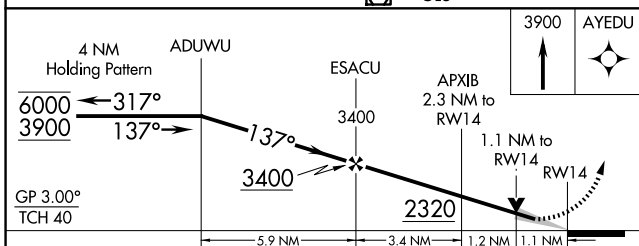
RNP APCH - GPS.	MISSED APPROACH: Climb to 3900 direct AYEDU and hold.
<p>▼ For uncompensated Baro-VNAV systems, LNAV/VNAV NA below -23°C or above 54°C.</p> <p>▲</p>	

ASOS <b>119.025</b>	MINNEAPOLIS CENTER <b>125.025 235.625</b>	UNICOM <b>122.7 (CTAF) 0</b>
------------------------	--	---------------------------------

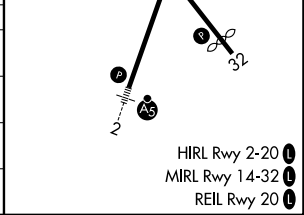


Procedure NA for arrival on OLU VOR/DME airway radial 308.

ELEV 1573	TDZE 1543
-----------	-----------



CATEGORY	A	B	C	D
LPV DA		1808-1	265 (300-1)	
LNAV/VNAV DA		1860-1	317 (300-1)	
LNAV MDA	1940-1	397 (400-1)	1940-1½	397 (400-1½)
CIRCLING	2060-1 487 (500-1)	2100-1 527 (600-1)	2260-2 687 (700-2)	2360-2½ 787 (800-2½)



NC-2, 14 MAY 2026 to 11 JUN 2026

NC-2, 14 MAY 2026 to 11 JUN 2026