

WAAS CH <b>56220</b> <b>W20A</b>	APP CRS <b>194°</b>	Rwy Ldg TDZE Apt Elev	<b>5504</b> <b>1545</b> <b>1573</b>
--	------------------------	-----------------------------	---

# RNAV (GPS) RWY 20

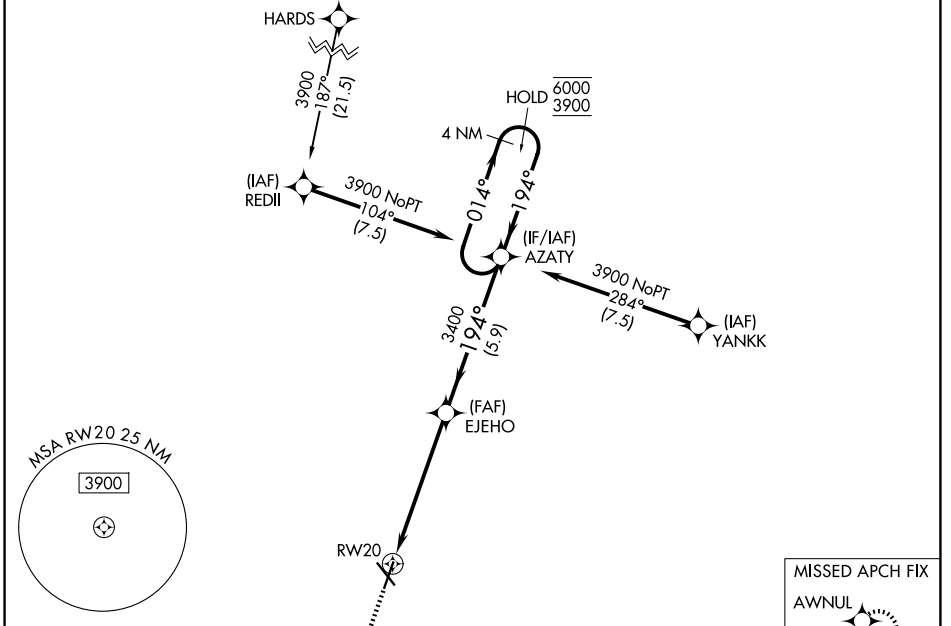
NORFOLK RGNL/KARL STEFAN MEML FLD (OFK)

RNP APCH - GPS.

▼ Rwy 20 helicopter visibility reduction below ¾ SM NA. For uncompensated Baro-VNAV systems, LNAV/VNAV NA below -23°C or above 54°C.

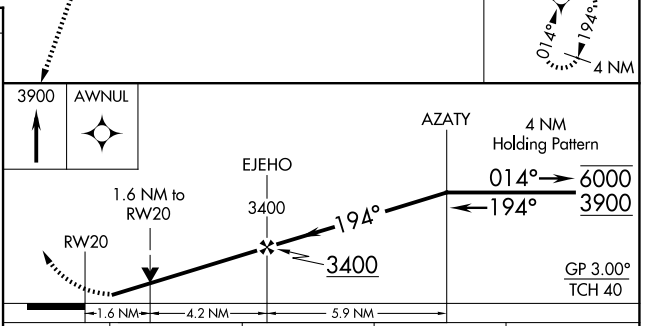
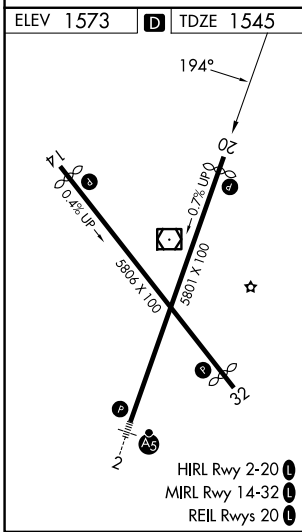
MISSED APPROACH: Climb to 3900 direct AWNUL and hold.

ASOS <b>119.025</b>	MINNEAPOLIS CENTER <b>125.025 235.625</b>	UNICOM <b>122.7 (CTAF) 0</b>
------------------------	--	---------------------------------



NC-2, 14 MAY 2026 to 11 JUN 2026

NC-2, 14 MAY 2026 to 11 JUN 2026



CATEGORY	A	B	C	D
LPV DA		1795-1	250 (300-1)	
LNAV/VNAV DA		1799-1	254 (300-1)	
LNAV MDA	2080-1	535 (600-1)	2080-1½	535 (600-1½)
CIRCLING	2080-1 507 (600-1)	2100-1 527 (600-1)	2260-2 687 (700-2)	2360-2½ 787 (800-2½)