

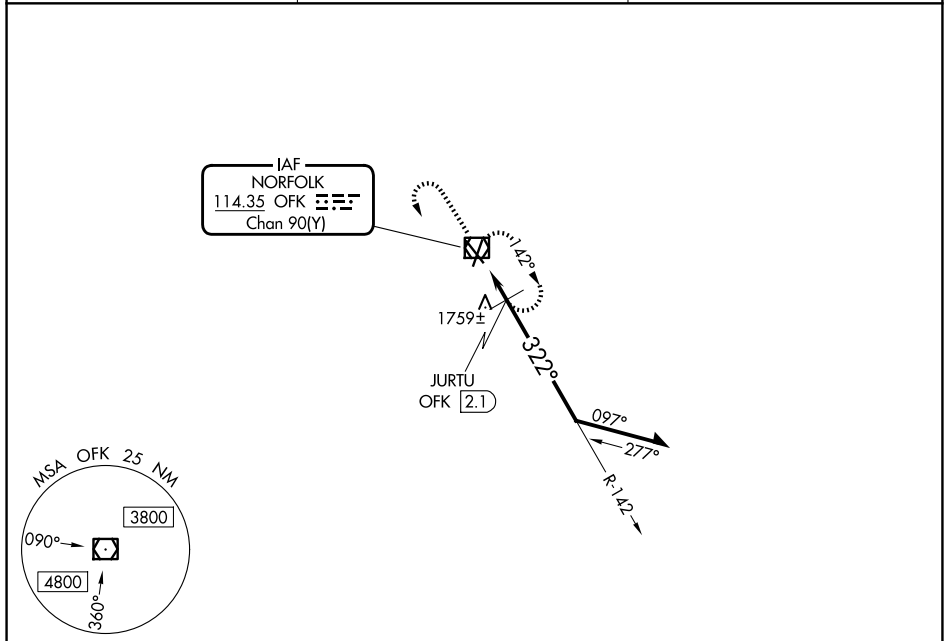
VOR/DME OFK 114.35 Chan 90 (Y)	APP CRS 322°	Rwy Ldg 5160 TDZE 1560 Apt Elev 1573
--	------------------------	---

VOR RWY 32

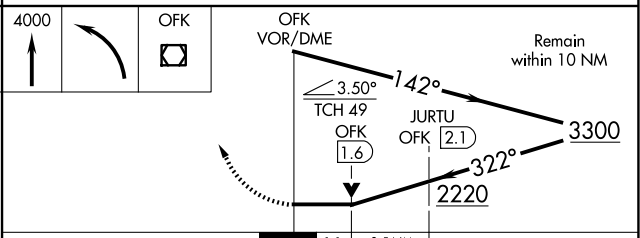
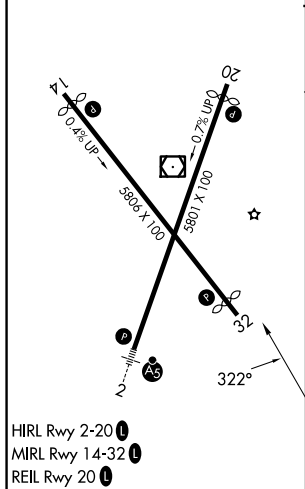
NORFOLK RGNL/KARL STEFAN MEML FLD (OFK)

<p>V Rwy 32 helicopter visibility reduction below ¼ SM NA.</p>	<p>MISSED APPROACH: Climb to 4000 then left turn direct OFK VOR/DME and hold.</p>
---	---

ASOS 119.025	MINNEAPOLIS CENTER 125.025 235.625	UNICOM 122.7 (CTAF) 0
------------------------	--	--



ELEV 1573	D	TDZE 1560
------------------	----------	------------------



CATEGORY	A	B	C	D
S-32	2220-1	660 (700-1)	2220-1 $\frac{7}{8}$	660 (700-1 $\frac{7}{8}$)
CIRCLING	2220-1	647 (700-1)	2260-2 687 (700-2)	2360-2 $\frac{1}{2}$ 787 (800-2 $\frac{1}{2}$)
JURTU FIX MINIMUMS (DME REQUIRED)				
S-32	2020-1	460 (500-1)	2020-1 $\frac{3}{8}$	460 (500-1 $\frac{3}{8}$)
CIRCLING	2060-1 487 (500-1)	2100-1 527 (600-1)	2260-2 687 (700-2)	2360-2 $\frac{1}{2}$ 787 (800-2 $\frac{1}{2}$)

VOR RWY 32

NC-2, 14 MAY 2026 to 11 JUN 2026

NC-2, 14 MAY 2026 to 11 JUN 2026