


LOC I-FOD 109.1	APP CRS 063°	Rwy Ldg 6547
		TDZE 1107
		Apt Elev 1156

ILS or LOC RWY 6

FORT DODGE RGNL (FOD)

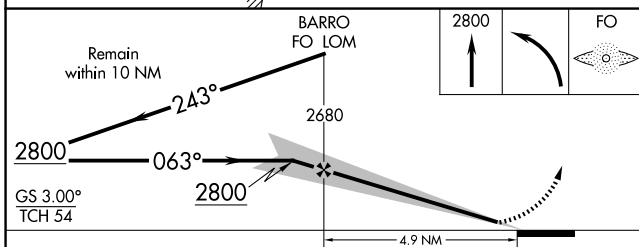
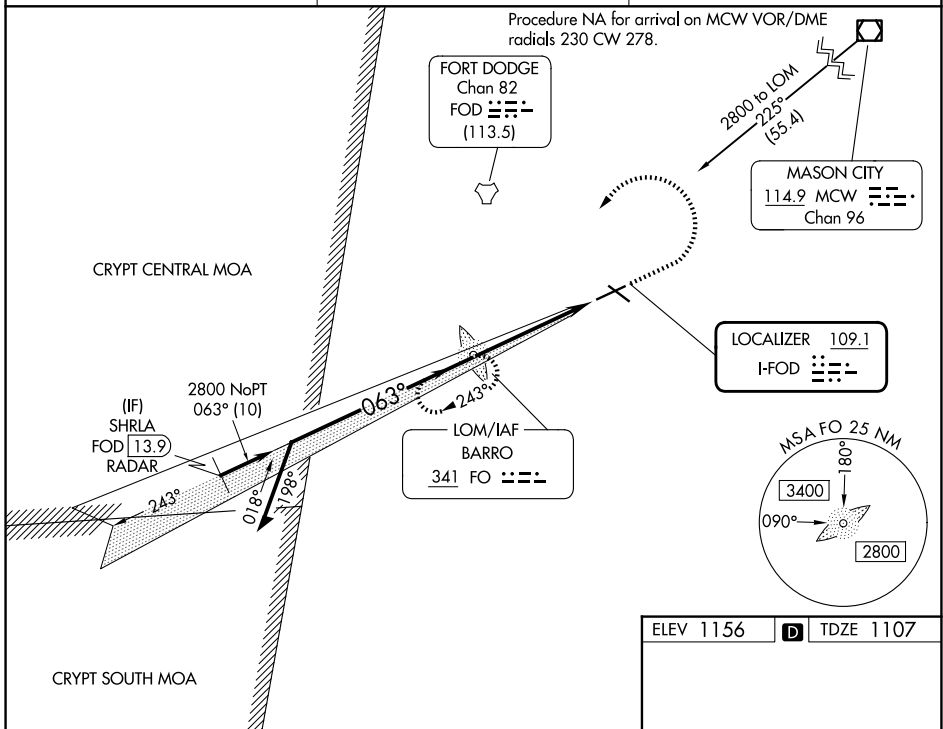
ADF required. RADAR required for procedure entry at SHRLA.


NA DME from FOD DME. Simultaneous reception of I-FOD and FOD DME required. For inop ALS, increase S-LOC 6 Cat C/D visibility to 1 1/2 SM.


MALSR 


MISSED APPROACH: Climb to 2800 then left turn direct BARRO LOM and hold.


AWOS-3PT 118.775	MINNEAPOLIS CENTER 134.0 288.3	UNICOM 123.0 (CTAF)
----------------------------	------------------------------------------	-------------------------------



ELEV 1156		TDZE 1107
-----------	-----------------------------------------------------------------------------------	-----------

MIRL Rwy 12-30 

REIL Rwys 12, 24 and 30 

HIRL Rwy 6-24 

FAF to MAP 4.9 NM

Knots	60	90	120	150	180
Min:Sec	4:54	3:16	2:27	1:58	1:38

CATEGORY	A	B	C	D
S-ILS 6	1307-1/2		200 (200-1/2)	
S-LOC 6	1600-1/2	493 (500-1/2)	1600-1	493 (500-1)
CIRCLING	1600-1 444 (500-1)	1620-1 464 (500-1)	1740-1 1/2 584 (600-1 1/2)	2080-3 924 (1000-3)

NC-3, 14 MAY 2026 to 11 JUN 2026

NC-3, 14 MAY 2026 to 11 JUN 2026