

WAAS CH 82615 W30A	APP CRS 305°	Rwy Ldg TDZE Apt Elev	5301 1142 1156
--	------------------------	-----------------------------	---

RNAV (GPS) RWY 30

FORT DODGE RGNL (FOD)

RNP APCH.

▼ For uncompensated Baro-VNAV systems, LNAV/VNAV NA below -17°C or above 54°C.
 ▲ Helicopter visibility reduction below ¼ SM NA. VDP and Baro-VNAV NA when using Webster City altimeter setting. When local altimeter setting not received, use Webster City altimeter setting: increase LPV DA to 1466 feet and all Cats visibility ¼ SM; increase LNAV/VNAV DA to 1516 feet; increase all MDA 60 feet and LNAV Cats C/D and Circling Cat C visibility ¼ SM.

MISSED APPROACH: Climb to 3400 direct CUVPO and hold.

AWOS-3PT

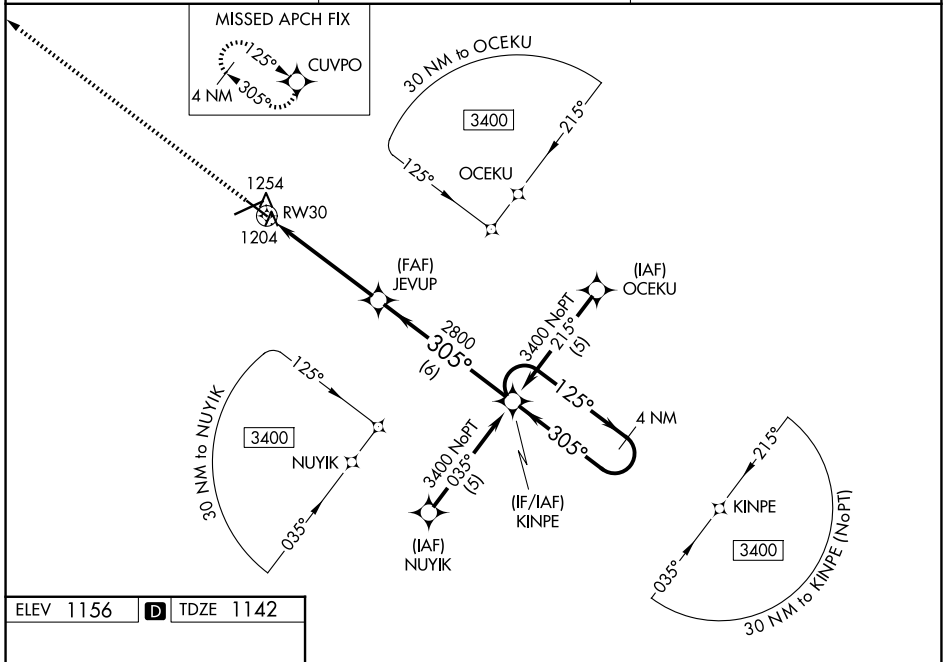
118.775

MINNEAPOLIS CENTER

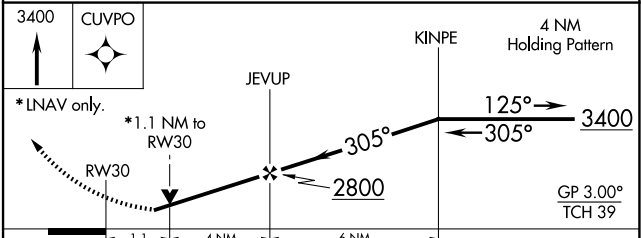
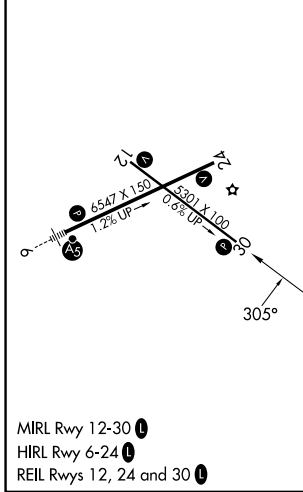
134.0 288.3

UNICOM

123.0 (CTAF) 0



ELEV 1156	D	TDZE 1142
-----------	----------	-----------



CATEGORY	A	B	C	D
LPV DA		1424-1	282 (300-1)	
LNAV/VNAV DA		1474-1¼	332 (400-1¼)	
LNAV MDA		1520-1	378 (400-1)	1520-1¼ 378 (400-1¼)
CIRCLING	1560-1 404 (500-1)	1620-1 464 (500-1)	1740-1½ 584 (600-1½)	2080-3 924 (1000-3)

FORT DODGE, IOWA
 Amdt 1B 20MAY21

42°33'N-94°12'W

RNAV (GPS) RWY 30

NC-3, 14 MAY 2026 to 11 JUN 2026