

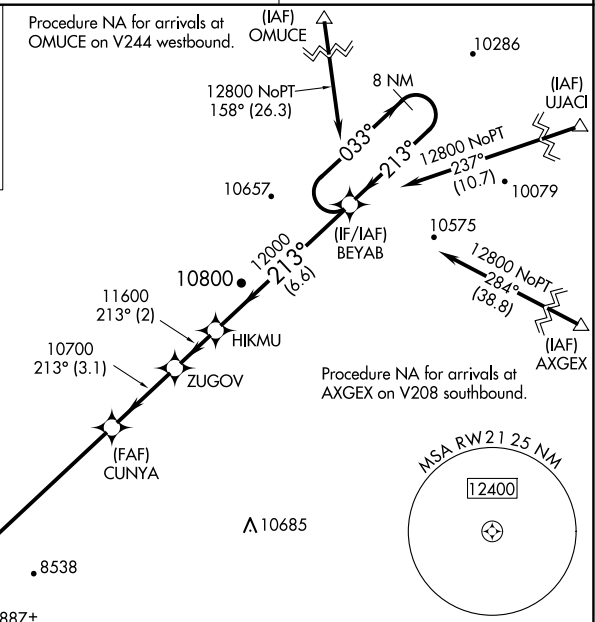
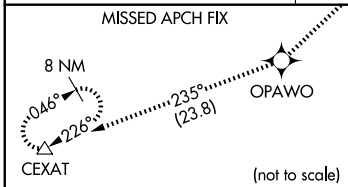
WAAS CH 99516 W21A	APP CRS 213°	Rwy Idg TDZE Apt Elev	7395 7564 7590
--	------------------------	-----------------------------	---

RNAV (GPS) RWY 21

BRYCE CANYON (BCE)

RNP APCH. ▼ For uncompensated Baro-VNAV systems, LNAV/VNAV NA below -30°C or above 54°C. When local altimeter setting not received, procedure NA. Rwy 21 helicopter visibility reduction below ¼ SM NA.	MISSED APPROACH: Climb to 12300 direct OPAWO and on track 235° to CEXAT and hold.
--	---

ASOS 135.475	SALT LAKE CITY CENTER 133.6 269.25	UNICOM 122.8 (CTAF) 0
------------------------	--	--



SW-4, 14 MAY 2026 to 11 JUN 2026

SW-4, 14 MAY 2026 to 11 JUN 2026

12300	OPAWO	ir 235°	CEXAT	VGSI and RNAV glidepath not coincident (VGSI Angle 3.00/TCH 43).	8 NM Holding Pattern
*LNAV only	WOBNO 3.1 NM to RW21	CUNYA	ZUGOV	HIKMU	BEYAB
*1.5 NM to RW21	10700	11600	12000	033°	213°
8580*	10700	12800	213°	0.5% UP	7395 X 75
1.5	1.6	6.7 NM	3.1 NM	2 NM	6.6 NM
CATEGORY	A	B	C	D	
LPV DA	7889-1 1/8 325 (300-1 1/8)		NA		
LNAV/VNAV DA	8016-1 1/2 452 (500-1 1/2)		NA		
LNAV MDA	8040-1 476 (500-1)	8040-1 3/8 476 (500-1 3/8)		NA	

MIRL Rwy 3-21 **0**
REIL Rwy 3 and 21 **0**