

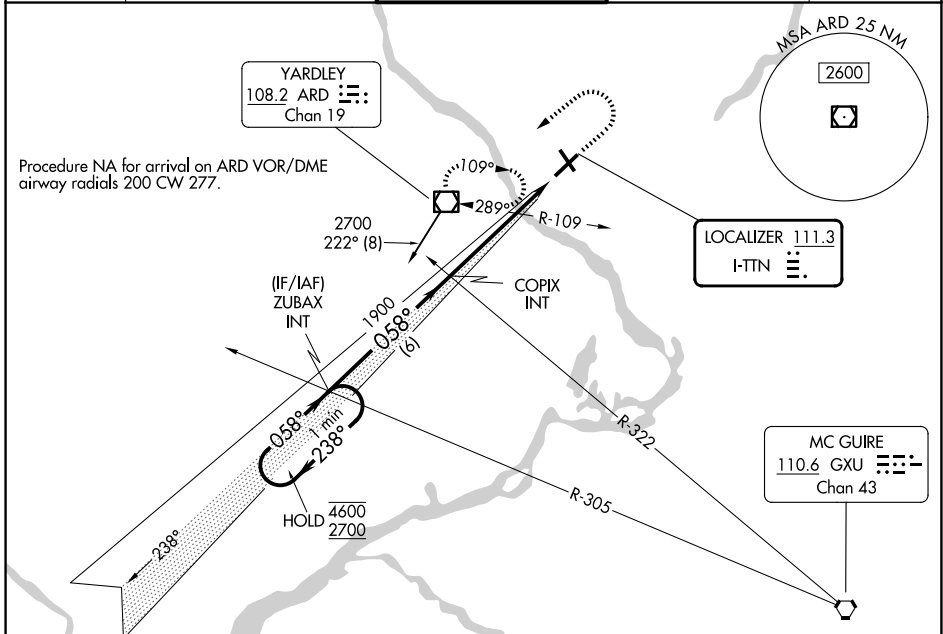
LOC I-TTN <b>111.3</b>	APP CRS <b>058°</b>	Rwy Idg TDZE Apt Elev	<b>6006</b> <b>186</b> <b>213</b>
---------------------------	------------------------	-----------------------------	---

# ILS or LOC RWY 6

TRENTON MERCER (TTN)

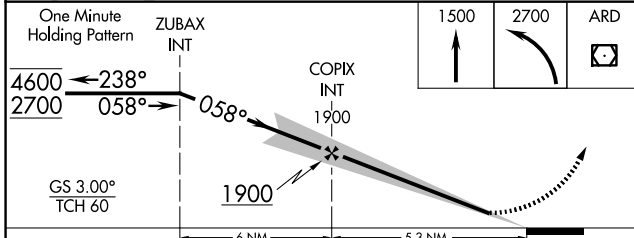
<p><b>⚠</b> When Circling to Rwy 34 at night, operational VGSI required, remain on or above VGSI glidepath until threshold. For inop ALS, increase S-LOC 6 Cat C/D visibility to 1½ SM.</p>	<p>MALSR</p>	<p>MISSED APPROACH: Climb to 1500 then climbing left turn to 2700 direct ARD VOR/DME and hold, continue climb-in-hold to 2700.</p>
---	--------------	--

ATIS <b>126.775</b>	PHILADELPHIA APP CON <b>123.8 291.7</b>	TRENTON TOWER ★ <b>120.7 (CTAF) 0 257.8</b>	GND CON <b>121.9 257.8</b>	UNICOM <b>122.95</b>
------------------------	--	--	-------------------------------	-------------------------

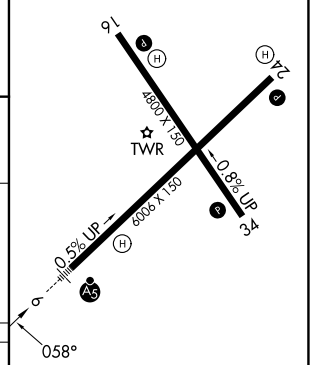


NE-2, 14 MAY 2026 to 11 JUN 2026

NE-2, 14 MAY 2026 to 11 JUN 2026



ELEV 213	D	TDZE 186
----------	---	----------



CATEGORY	A	B	C	D
S-ILS 6	390-½		204 (200-½)	
S-LOC 6	660-½ 474 (500-½)		660- 1 474 (500-1)	
CIRCLING	680-1 467 (500-1)		760-1½ 980-2½ 547 (600-1½) 767 (800-2½)	

HIRL Rwy 6-24 and 16-34					
REIL Rwy 16, 24 and 34					
FAF to MAP 5.3 NM					
Knots	60	90	120	150	180
Min:Sec	5:18	3:32	2:39	2:07	1:46