

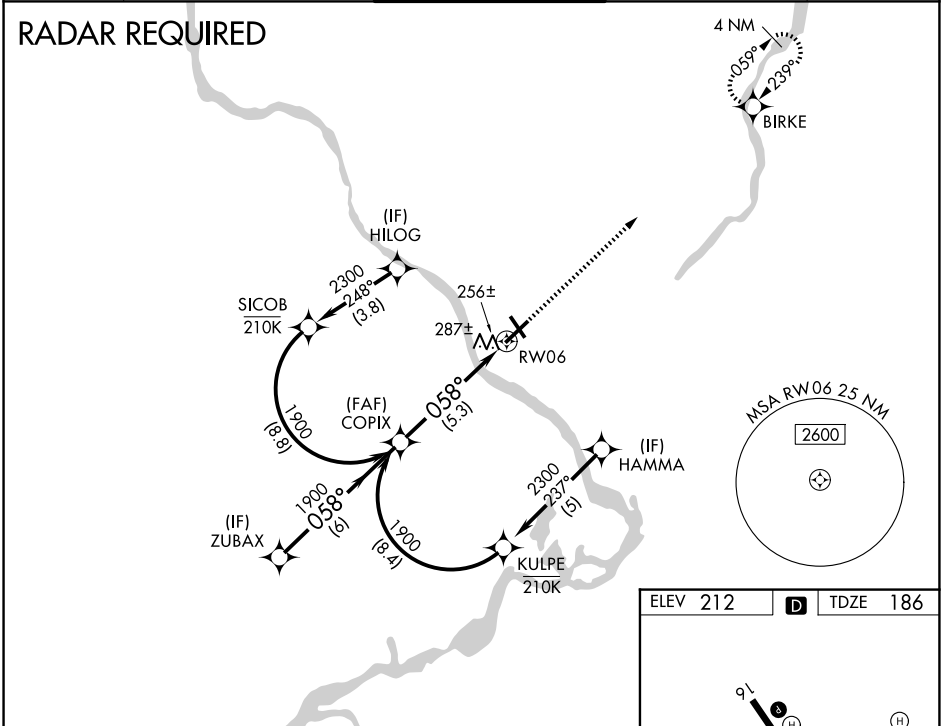
APP CRS	Rwy Ldg	6006
058°	TDZE	186
	Apt Elev	212

RNAV (RNP) Y RWY 6

TRENTON MERCER (TTN)

<p>▽ For uncompensated Baro-VNAV systems, procedure NA below -13°C (8°F) or above 54°C (130°F). GPS required.</p> <p>For inoperative MALSR, increase RNP 0.10 DA all Cats visibility to 1 mile, increase RNP 0.30 DA all Cats visibility to 1½ mile.</p>	<p>MALSR</p>	<p>MISSED APPROACH: Climb to 2600 direct BIRKE and hold.</p>

ATIS 126.775	PHILADELPHIA APP CON 123.8 291.7	TRENTON TOWER ★ 120.7 (CTAF) 0 257.8	GND CON 121.9 257.8	UNICOM 122.95
------------------------	--	--	-------------------------------	-------------------------



NE-2, 14 MAY 2026 to 11 JUN 2026

NE-2, 14 MAY 2026 to 11 JUN 2026

ELEV 212	D	TDZE 186		
<p>COPIX 1900</p> <p>VGSI and RNAV glidepath not coincident. See planview for multiple IF locations.</p> <p>2600 BIRKE</p> <p>1900 058°</p> <p>GP 3.00° TCH 60</p> <p>5.3 NM</p> <p>RWY 06</p>				
CATEGORY	A	B	C	D
RNP 0.10 DA		510-½	324 (300-½)	
RNP 0.30 DA		668-1⅛	482 (500-1⅛)	
AUTHORIZATION REQUIRED				
<p>HIRL Rwy 6-24 and 16-34 0</p> <p>REIL Rwy 16, 24 and 34 0</p>				