

WAAS CH 97530 W24A	APP CRS 239°	Rwy Ldg 6006 TDZE 193 Apt Elev 213
--	------------------------	---

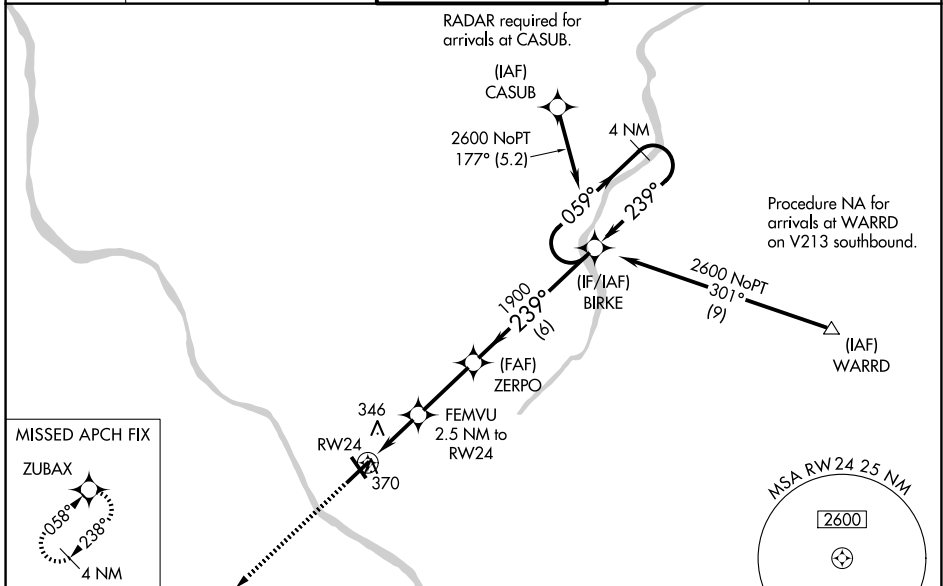
RNAV (GPS) Z RWY 24

TRENTON MERCER (TTN)

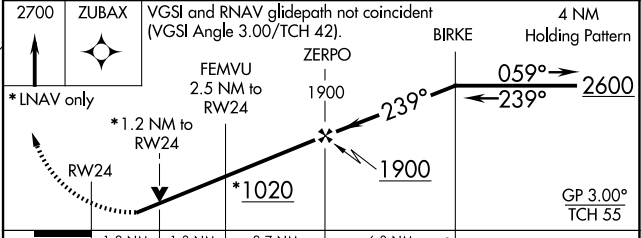
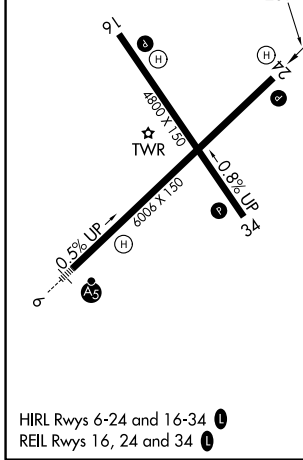
⚠ Baro-VNAV NA when using Northeast Philadelphia altimeter setting. For uncompensated Baro-VNAV systems, LNAV/VNAV NA below -13°C (8°F) or above 54°C (130°F). DME/DME RNP-0.3 NA. When local altimeter setting not received, use Northeast Philadelphia altimeter setting: increase LPV DA to 626 feet and LNAV/VNAV DA to 677 feet and all visibilities ½ mile; increase all MDA 60 feet and LNAV Cats C and D visibilities ½ mile and Circling visibility Cat C ¼ mile. VDP NA with Northeast Philadelphia altimeter setting. Helicopter visibility reduction below ¼ SM NA. Night Landing: Rwy 34 operational VGSI required, remain on or above VGSI glidepath until threshold.

MISSED APPROACH:
Climb to 2700 direct ZUBAX and hold.

ATIS 126.775	PHILADELPHIA APP CON 123.8 291.7	TRENTON TOWER ★ 120.7 (CTAF) 0 257.8	GND CON 121.9 257.8	UNICOM 122.95
------------------------	--	--	-------------------------------	-------------------------



ELEV 213	D	TDZE 193
----------	----------	----------



CATEGORY	A	B	C	D
LPV DA		580-1¼	387 (400-1¼)	
LNAV/VNAV DA		631-1½	438 (500-1½)	
LNAV MDA	620-1	428 (500-1)	620-1¼	428 (500-1¼)
CIRCLING	680-1	467 (500-1)	760-1½ 547 (600-1½)	960-2½ 747 (800-2½)

NE-2, 14 MAY 2026 to 11 JUN 2026

NE-2, 14 MAY 2026 to 11 JUN 2026