


WAAS CH <b>78400</b> <b>W14A</b>	APP CRS <b>137°</b>	Rwy Ldg <b>6983</b> TDZE <b>107</b> Apt Elev <b>107</b>
--	------------------------	---

# RNAV (GPS) RWY 14

MC ALLEN INTL (MFE)

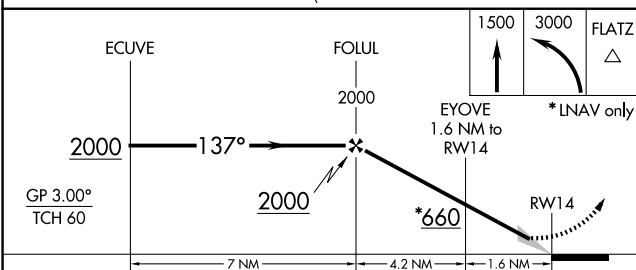
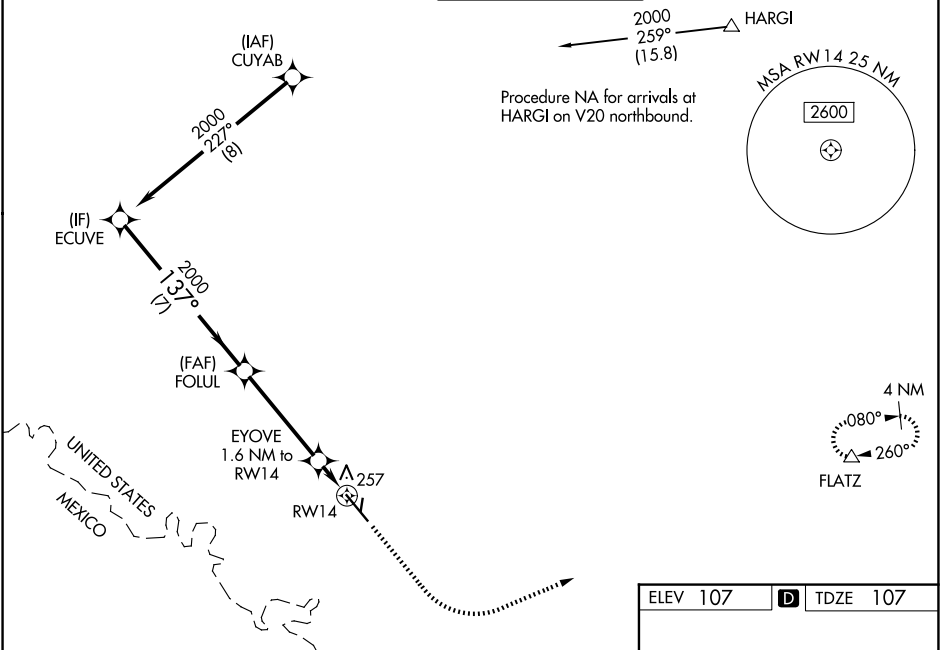
**RNP APCH-GPS.**

⚠ Circling NA northeast of Rwy 14-32. For inop ALS, increase LNAV/VNAV visibility all Cats to 3/8 SM and LNAV visibility Cat C/D to 1/8 SM. For inop ALS when using Weslaco altimeter setting, increase LNAV/VNAV visibility all Cats to 1 SM. For uncompensated Baro-VNAV systems, LNAV/VNAV NA below 1°C or above 54°C. When local altimeter setting not received, use Weslaco altimeter setting and increase all DA 39 feet and LNAV/VNAV all Cats visibility 1/8 SM; increase all MDA 40 feet and LNAV Cat C/D visibility 1/8 SM.

MALSR 

**MISSED APPROACH:** Climb to 1500 then climbing left turn to 3000 direct FLATZ and hold.

ATIS <b>128.5</b>	VALLEY APP CON <b>126.55 377.2</b>	MC ALLEN TOWER ★ <b>118.5 (CTAF) 0 256.9</b>	GND CON <b>121.8</b>	UNICOM <b>122.95</b>
----------------------	---------------------------------------	---	-------------------------	-------------------------



ELEV 107	<b>D</b> TDZE 107
----------	-------------------

137°

1500

3000

FLATZ

81

TWR

2639 X 60

20.3% Up

36

7.120 X 130

REIL Rwy 32

HIRL Rwy 14-32 0

MIRL Rwy 18-36 0

CATEGORY	A	B	C	D
LPV DA		307-1/2	200 (200-1/2)	
LNAV/VNAV DA		418-1/2	311 (400-1/2)	
LNAV MDA	520-1/2	413 (500-1/2)	520-3/4	413 (500-3/4)
CIRCLING	580-1	473 (500-1)	580-1 1/2	800-2 1/4
			473 (500-1 1/2)	693 (700-2 1/4)

SC-3, 14 MAY 2026 to 11 JUN 2026

SC-3, 14 MAY 2026 to 11 JUN 2026