

LOC I-HOV 110.5	APP CRS 196°	Rwy Ldg 10302
		TDZE 1330
		Apt Elev 1333

ILS or LOC RWY 19R

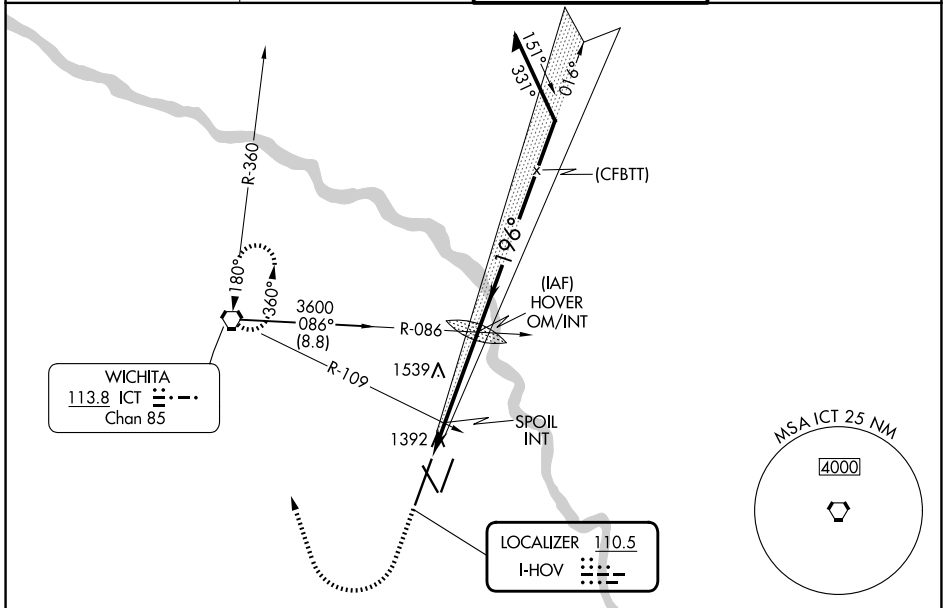
WICHITA DWIGHT D EISENHOWER NTL (ICT)

⚠ Simultaneous approach authorized with Rwy 19L. For inoperative MALSR, increase S-ILS 19R# Cat E visibility to RVR 4000, S-LOC 19R Cat E visibility to 1/2 mile, SPOIL FIX minimums: S-LOC 19R Cat D and E visibility to RVR 5000.
RVR 1800 authorized with the use of FD or AP or HUD to DA.

MALSR

MISSED APPROACH: Climb to 3500 then climbing right turn to 3600 direct ICT VORTAC and hold.

ATIS 125.15	WICHITA APP CON 126.7 353.5	WICHITA TOWER 118.2 257.8	GND CON 121.9 348.6
-----------------------	---------------------------------------	-------------------------------------	-------------------------------



ELEV 1333 **D** TDZE 1330

FAF to MAP 4.9 NM

Knots	60	90	120	150	180
Min:Sec	4:54	3:16	2:27	1:58	1:38

HIRL all Rwys
REIL Rwys 14 and 32
TDZ/CL Rwy 1L

	3500	3600	ICT	HOVER OM/INT	Remain within 15 NM
	↑	↷			
*LOC only.			SPOIL INT	2947	016°
				1820*	196°
				3000	3600
				GS 3.00°	TCH 52
				1.4 NM	3.5 NM
CATEGORY	A	B	C	D	E
S-ILS 19R#	1530/24 200 (200-1/2)				
S-LOC 19R	1820/24 490 (500-1/2)	1820/40 490 (500-3/4)	1820/50 490 (500-1)	1820/60 490 (500-1 1/4)	
CIRCLING	1820-1 487 (500-1)	1980-1 3/4 647 (700-1 3/4)	1980-2 647 (700-2)	2000-2 1/4 667 (700-2 1/4)	
SPOIL FIX MINIMUMS (DUAL VOR RECEIVERS REQUIRED)					
S-LOC 19R	1660/24 330 (400-1/2)		1660/40 330 (400-3/4)		
CIRCLING	1800-1 467 (500-1)	1980-1 3/4 647 (700-1 3/4)	1980-2 647 (700-2)	2000-2 1/4 667 (700-2 1/4)	

NC-2, 14 MAY 2026 to 11 JUN 2026

NC-2, 14 MAY 2026 to 11 JUN 2026