

APP CRS	Rwy Ldg	<b>7302</b>
<b>196°</b>	TDZE	<b>1320</b>
	Apt Elev	<b>1333</b>


# RNAV (RNP) Z RWY 19L

WICHITA DWIGHT D EISENHOWER NTL (ICT)

**RNP AR APCH.**

▼ For uncompensated Baro-VNAV systems, procedure NA below -15°C (5°F) or above 54°C (130°F). For inoperative MALSRS, increase RNP 0.11 all Cats visibility to ¾ mile and RNP 0.30 all Cats visibility to 1¼ mile. GPS required. Simultaneous approach authorized with ILS or LOC RWY 19R. Use of FD or AP providing RNAV track guidance required during simultaneous operations.

**MALSRS**



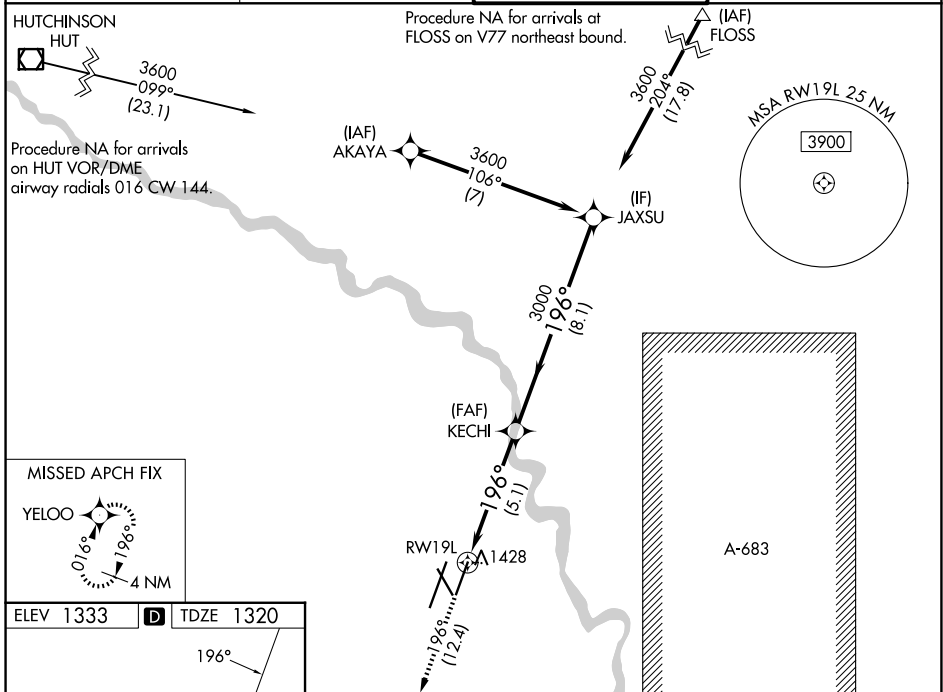
**MISSED APPROACH:** Climb to 3600 on track 196° to YELOO and hold.

**ATIS**  
**125.15**

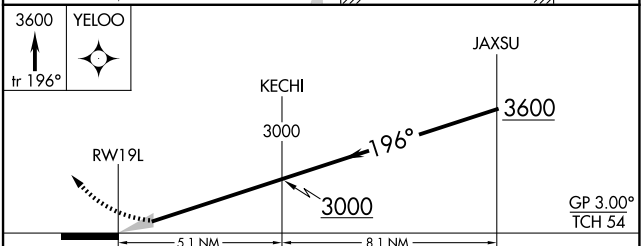
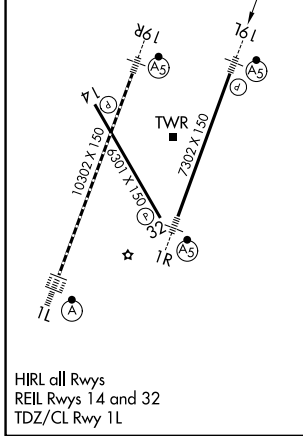
**WICHITA APP CON**  
**126.7 353.5**

**WICHITA TOWER**  
**118.2 257.8**

**GND CON**  
**121.9 348.6**



ELEV 1333	<b>D</b>	TDZE 1320
-----------	----------	-----------



CATEGORY	A	B	C	D
RNP 0.11 DA		1570-½	250 (300-½)	
RNP 0.30 DA		1800-1⅛	480 (500-1⅛)	

**AUTHORIZATION REQUIRED**

NC-2, 14 MAY 2026 to 11 JUN 2026

NC-2, 14 MAY 2026 to 11 JUN 2026