

WAAS CH <b>49119</b> <b>W19B</b>	APP CRS <b>196°</b>	Rwy Ldg TDZE Apt Elev	<b>7302</b> <b>1320</b> <b>1333</b>
--	------------------------	-----------------------------	---

# RNAV (GPS) Y RWY 19L

WICHITA DWIGHT D EISENHOWER NTL (ICT)

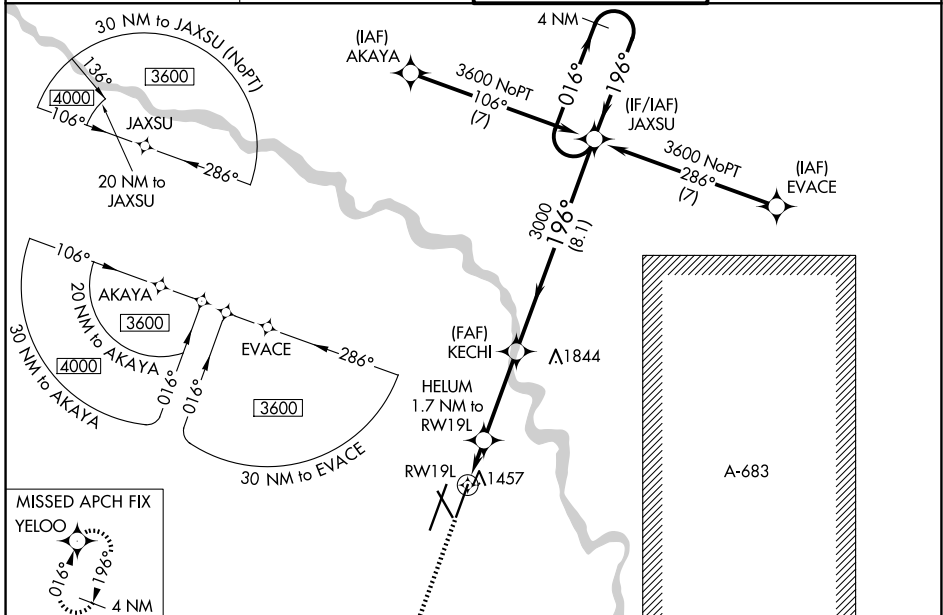
RNP APCH.

▼ For uncompensated Baro-VNAV systems, LNAV/VNAV NA below -15°C (5°F) or above 54°C (130°F). Simultaneous approach authorized with ILS or LOC RWY 19R. LNAV procedure NA during simultaneous operations. Use of FD or AP providing RNAV track guidance required during simultaneous operations.

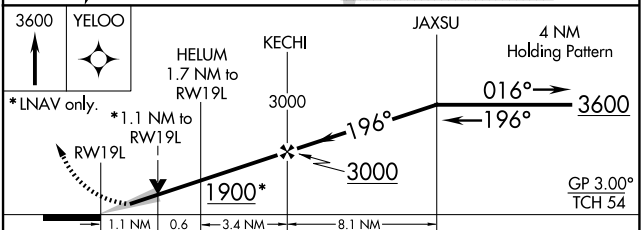
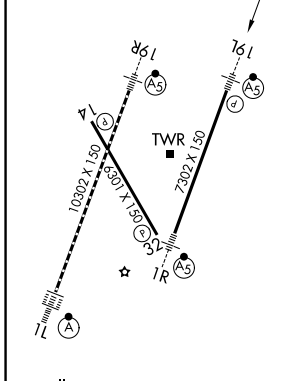


MISSED APPROACH:  
Climb to 3600 direct  
YELOO and hold.

ATIS <b>125.15</b>	WICHITA APP CON <b>126.7 353.5</b>	WICHITA TOWER <b>118.2 257.8</b>	GND CON <b>121.9 348.6</b>
-----------------------	---------------------------------------	-------------------------------------	-------------------------------



ELEV 1333	<b>D</b>	TDZE 1320
-----------	----------	-----------



CATEGORY	A	B	C	D
LPV DA		1520-½	200 (200-½)	
LNAV/VNAV DA		1747-¾	427 (500-¾)	
LNAV MDA	1780-½	460 (500-½)	1780-⅞	460 (500-⅞)
CIRCLING	1800-1	467 (500-1)	1980-1¾ 647 (700-1¾)	1980-2 647 (700-2)

HIRL all Rwys  
REIL Rwys 14 and 32  
TDZ/CL Rwy 1L

NC-2, 14 MAY 2026 to 11 JUN 2026

NC-2, 14 MAY 2026 to 11 JUN 2026