

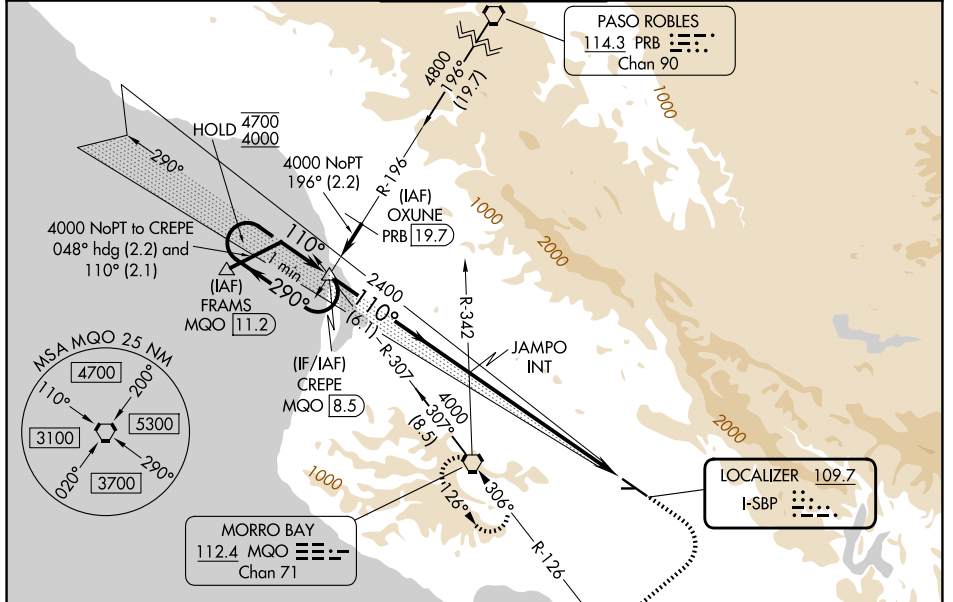
LOC I-SBP 109.7	APP CRS 110°	Rwy Ldg 5300 TDZE 198 Apt Elev 212
---------------------------	------------------------	---

ILS or LOC RWY 11

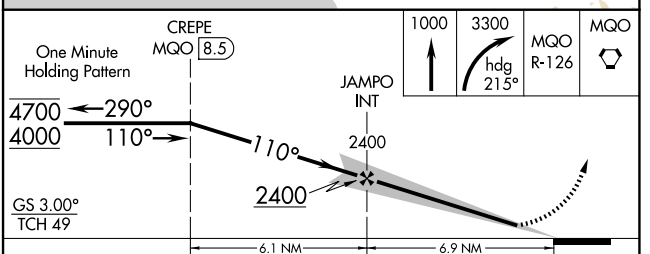
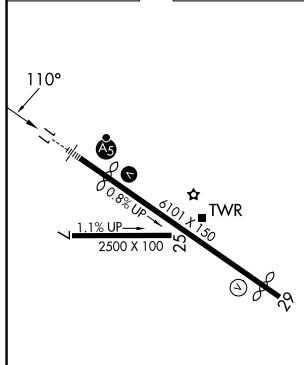
SAN LUIS OBISPO COUNTY RGNL (SBP)

<p>⚠ Circling Rwy 25 NA at night. Circling NA north of Rwy 11-29. Autopilot coupled approach NA below 677. For inop ALS, increase S-ILS 11 all Cats visibility to ¾ SM, S-LOC 11 Cat A visibility to 1¼ SM, Cat B visibility to 1½ SM.</p>	<p>MALSRR AS</p>	<p>MISSED APPROACH: Climb to 1000 then climbing right turn to 3300 on heading 215° and MQO VORTAC R-126 to MQO VORTAC and hold, continue climb-in-hold to 3300. S-ILS 11* missed approach requires minimum climb of 210 feet per NM to 1160.</p>
---	----------------------	--

ATIS 120.6	SANTA BARBARA APP CON* 127.725 244.575	SAN LUIS TOWER* 124.0 (CTAF) 0 379.9	GND CON 121.6	UNICOM 122.95
----------------------	--	--	-------------------------	-------------------------



ELEV 212	D	TDZE 198
----------	----------	----------



CATEGORY	A	B	C	D
S-ILS 11*	398-½		200 (200-½)	
S-ILS 11	495-½		297 (300-½)	
S-LOC 11	1420-¾ 1222 (1300-¾)	1420-1 1222 (1300-1)	1420-3	1222 (1300-3)
CIRCLING	1420-1¼ 1208 (1300-1¼)	1420-1½ 1208 (1300-1½)	1500-3 1288 (1300-3)	1760-3 1548 (1600-3)

REIL Rwy 29
HIRL Rwy 11-29

FAF to MAP 6.9 NM

Knots	60	90	120	150	180
Min:Sec	6:54	4:36	3:27	2:46	2:18

SW-3, 14 MAY 2026 to 11 JUN 2026

SW-3, 14 MAY 2026 to 11 JUN 2026