

WAAS CH <b>53443</b>	APP CRS <b>290°</b>	Rwy Ldg TDZE Apt Elev	<b>5600</b> <b>212</b> <b>212</b>
<b>W29A</b>			

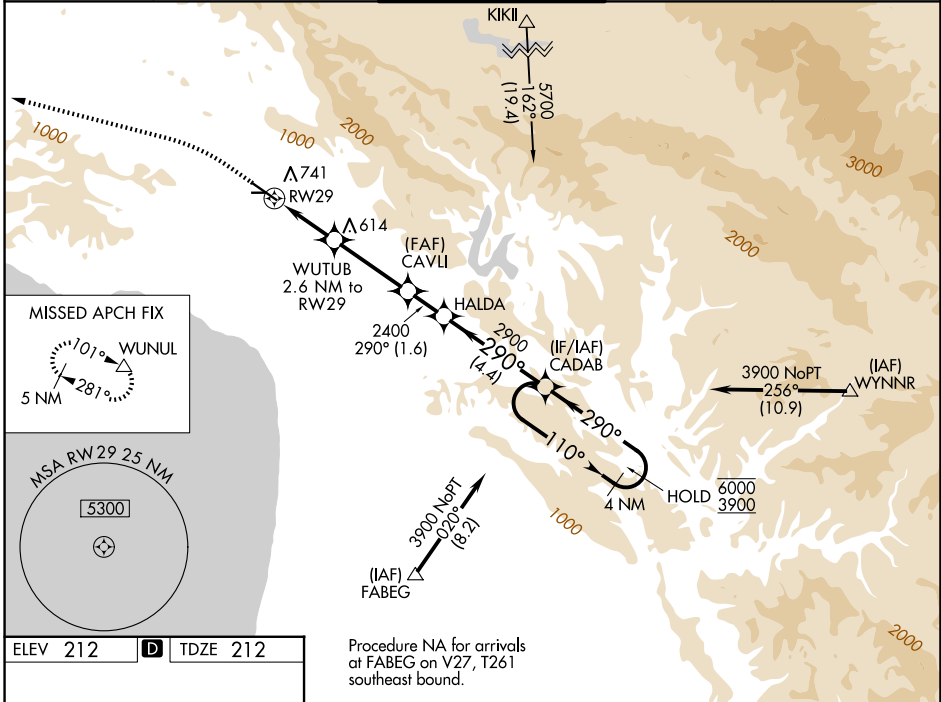
**RNAV (GPS) RWY 29**  
SAN LUIS OBISPO COUNTY RGNL (SBP)

RNP APCH - GPS

**⚠** Circling to Rwy 25 NA at night. Circling NA north of Rwy 11-29.  
**⚠** Rwy 29 helicopter visibility reduction below 3/4 SM NA. For uncompensated Baro-VNAV systems, LNAV/VNAV NA below 0° C or above 52° C.

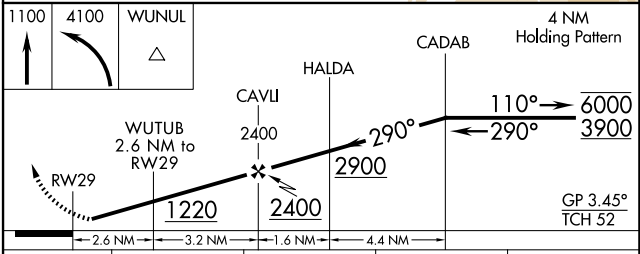
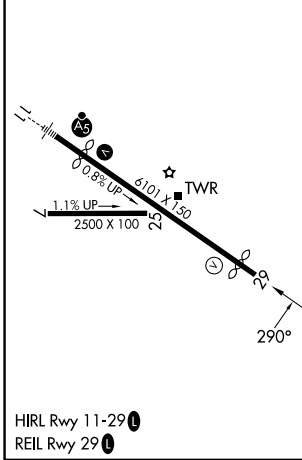
**MISSED APPROACH:** Climb to 1100 then climbing left turn to 4100 direct WUNUL and hold, continue climb-in-hold to 4100.

ATIS <b>120.6</b>	SANTA BARBARA APP CON* <b>127.725 244.575</b>	SAN LUIS TOWER* <b>124.0 (CTAF) 0 379.9</b>	GND CON <b>121.6</b>	UNICOM <b>122.95</b>
----------------------	--	--	-------------------------	-------------------------



ELEV 212	<b>D</b>	TDZE 212
----------	----------	----------

Procedure NA for arrivals at FABEG on V27, T261 southeast bound.



CATEGORY	A	B	C	D
LPV DA		831-1 <sup>3</sup> / <sub>4</sub>	619 (700-1 <sup>3</sup> / <sub>4</sub> )	
LNAV/VNAV DA		835-1 <sup>3</sup> / <sub>4</sub>	623 (700-1 <sup>3</sup> / <sub>4</sub> )	
LNAV MDA	1000-1 788 (800-1)	1000-1 <sup>1</sup> / <sub>4</sub> 788 (800-1 <sup>1</sup> / <sub>4</sub> )	1000-2 <sup>1</sup> / <sub>2</sub> 788 (800-2 <sup>1</sup> / <sub>2</sub> )	788 (800-2 <sup>1</sup> / <sub>2</sub> )
CIRCLING	1000-1 788 (800-1)	1220-1 <sup>1</sup> / <sub>2</sub> 1008 (1100-1 <sup>1</sup> / <sub>2</sub> )	1500-3 1288 (1300-3)	1760-3 1548 (1600-3)

SW-3, 14 MAY 2026 to 11 JUN 2026

SW-3, 14 MAY 2026 to 11 JUN 2026