

WAAS CH 40210 W03A	APP CRS 031°	Rwy Ldg TDZE Apt Elev	4000 54 55
--	------------------------	-----------------------------	---------------------------------------

RNAV (GPS) RWY 3

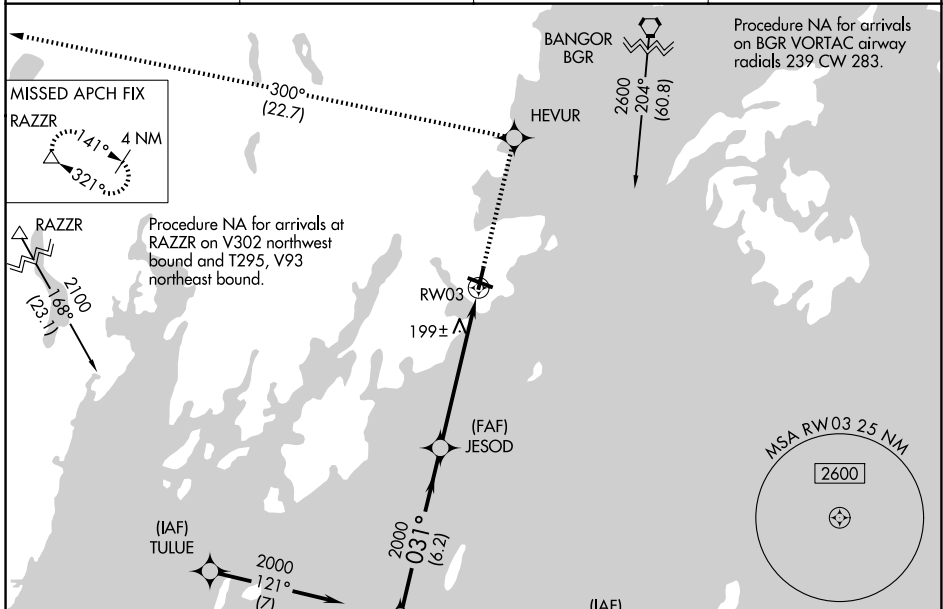
KNOX COUNTY RGNL (R.KD)

RNP APCH.

▽ Rwy 3 helicopter visibility reduction below 3/4 SM NA.
▲ For uncompensated Baro-VNAV systems,
 LNAV/VNAV NA below -15°C or above 54°C.

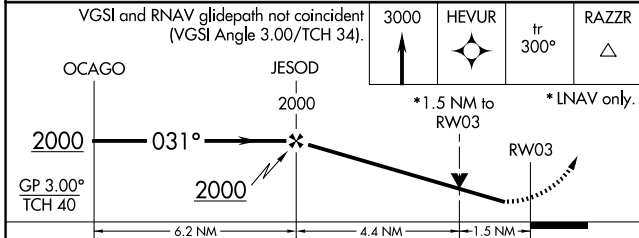
MISSED APPROACH: Climb to 3000 direct HEVUR and on track 300° to RAZZR and hold.

AWOS-3PT 119.025	PORTLAND APP CON ★ 120.4 299.2	CLNC DEL 123.8	UNICOM 123.05 (CTAF) 0
----------------------------	--	--------------------------	---



NE-1, 14 MAY 2026 to 11 JUN 2026

ELEV 55	D	TDZE 54
---------	----------	---------



CATEGORY	A	B	C	D
LPV DA	374-1 1/4 320 (400-1 1/4)			
LNAV/VNAV DA	459-1 1/2 405 (500-1 1/2)			
LNAV MDA	560-1 506 (600-1)	560-1 506 (600-1 3/8)	560-1 506 (600-1 1/2)	560-1 506 (600-1 1/2)
CIRCLING	600-1 545 (600-1)	720-1 3/4 665 (700-1 3/4)	1140-3 1085 (1100-3)	

