

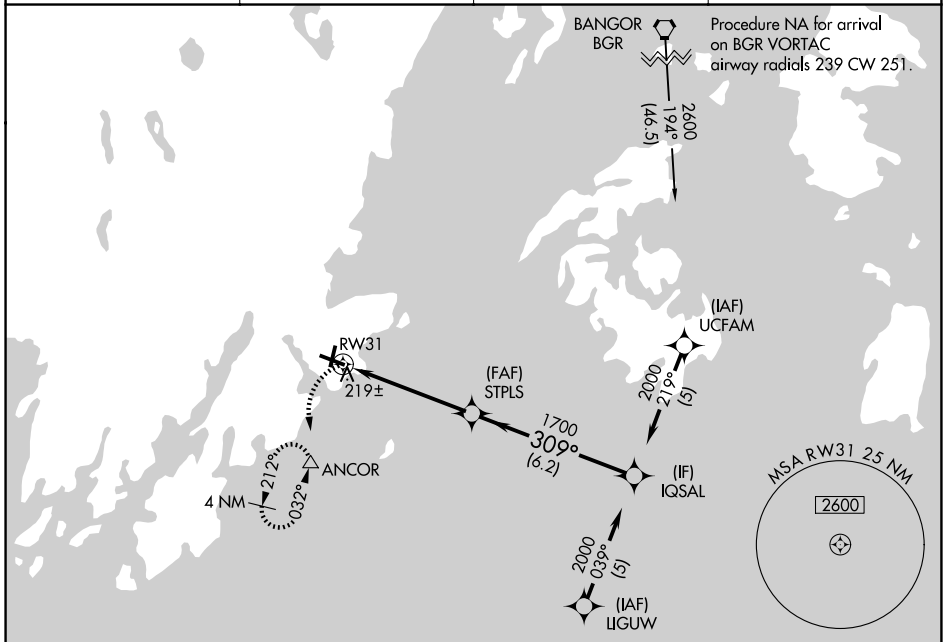
APP CRS	Rwy Ldg	<b>5412</b>
<b>309°</b>	TDZE	<b>55</b>
	Apt Elev	<b>55</b>

# RNAV (GPS) RWY 31

KNOX COUNTY RGNL (R.KD)

RNP APCH.		MISSED APPROACH: Climbing left turn to 2000 direct ANCOR and hold, continue climb-in-hold to 2000.
	Rwy 31 helicopter visibility reduction below 3/4 SM NA.	

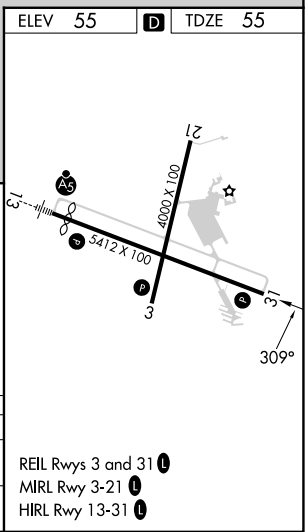
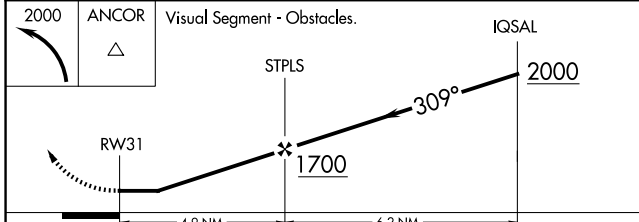
AWOS-3PT <b>119.025</b>	PORTLAND APP CON ★ <b>120.4 299.2</b>	CLNC DEL <b>123.8</b>	UNICOM <b>123.05</b> (CTAF)
----------------------------	--	--------------------------	--------------------------------



NE-1, 14 MAY 2026 to 11 JUN 2026

NE-1, 14 MAY 2026 to 11 JUN 2026

ELEV 55		TDZE 55
---------	--	---------



CATEGORY	A	B	C	D
LNVA MDA	480-1	425 (500-1)	480-1 1/4	425 (500-1 1/4)
CIRCLING	580-1	525 (600-1)	720-1 3/4 665 (700-1 3/4)	1140-3 1085 (1100-3)

- REIL Rwy 3 and 31
- MIRL Rwy 3-21
- HIRL Rwy 13-31