

LOC/DME I-FOK <b>111.7</b> Chan <b>54</b>	APP CRS <b>236°</b>	Rwy Ldg TDZE <b>66</b> Apt Elev <b>66</b>	<b>9002</b>
---	------------------------	---	-------------

# ILS or LOC RWY 24

FRANCIS S GABRESKI (F'OK)

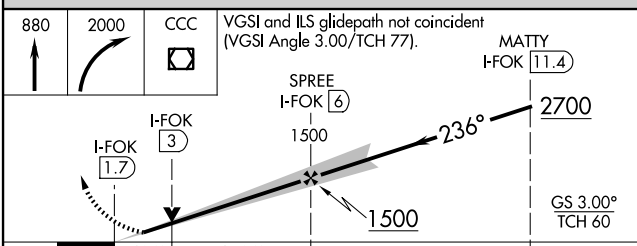
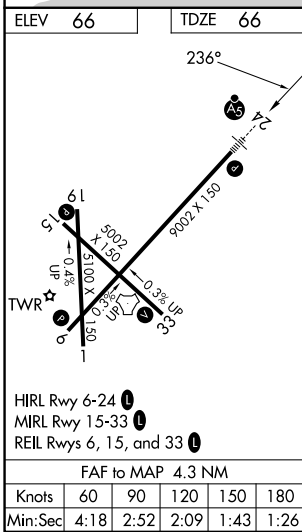
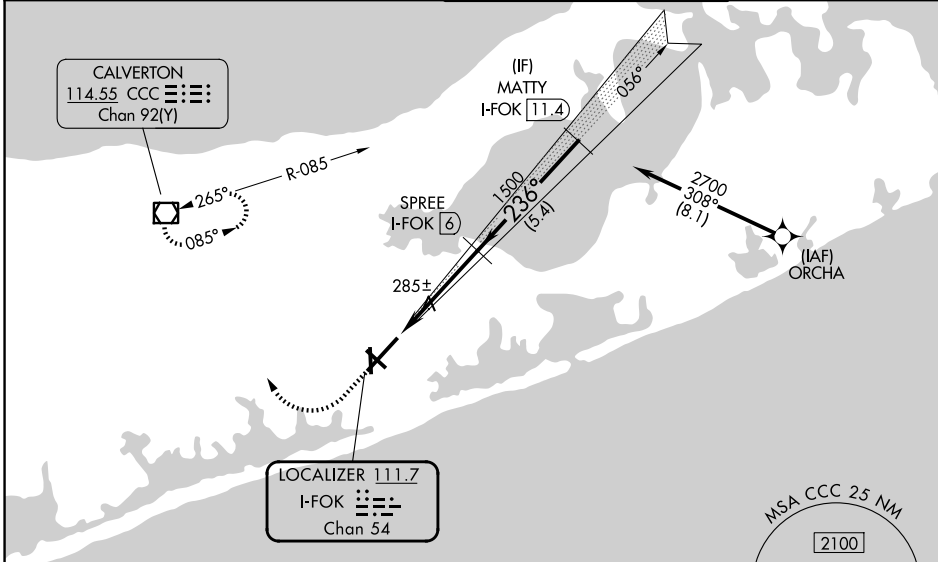
RNP APCH - GPS. From ORCHA.  
DME required for LOC only.

**▼** Rwy 24 helicopter visibility reduction below ¼ SM NA. Circling Rwy 15, 19 NA at night. VDP NA when using HWV altimeter setting. For inop ALS, increase S-ILS 24 all Cats visibility to ¾ SM and S-LOC 24 Cat A/B visibility to 1 SM and Cat C/D visibility to 1¾ SM. When local altimeter setting not received, use HWV altimeter setting and increase S-ILS 24 DA to 374 feet; increase all MDAs 40 feet and Circling visibility Cat C/D ¼ SM.



MISSED APPROACH: Climb to 880 then climbing right turn to 2000 direct CCC VOR/DME and hold.

ASOS <b>119.925</b>	NEW YORK APP CON <b>125.975 343.65</b>	SUFFOLK TOWER★ <b>125.3 (CTAF) 0 236.6</b>	GND CON <b>121.8 225.4</b>
------------------------	---	---	-------------------------------



CATEGORY	A	B	C	D
S-ILS 24		344-¾	278 (300-¾)	
S-LOC 24	540-¾	474 (500-¾)	540-1	474 (500-1)
CIRCLING	600-1 534 (600-1)	620-1 554 (600-1)	700-1¾ 634 (700-1¾)	740-2¼ 674 (700-2¼)

NE-2, 14 MAY 2026 to 11 JUN 2026

NE-2, 14 MAY 2026 to 11 JUN 2026