

WAAS CH 40009 W24A	APP CRS 236°	Rwy Ldg TDZE Apt Elev	9002 66 66
--	------------------------	-----------------------------	---------------------------------------

RNAV (GPS) RWY 24

FRANCIS S GABRESKI (F'OK)

RNP APCH - GPS.

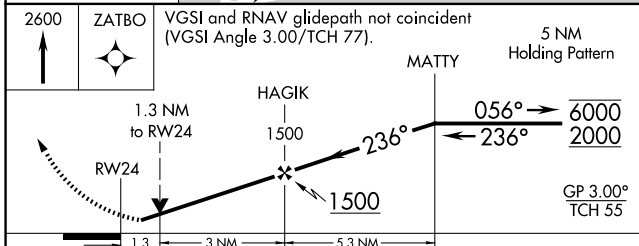
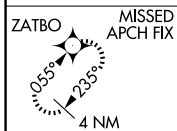
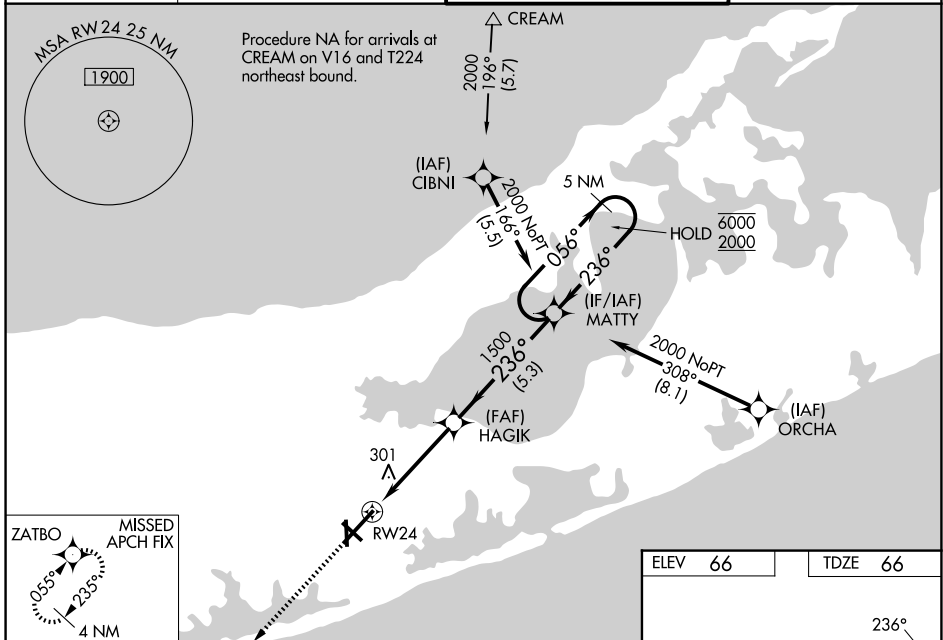
▼ For uncompensated Baro-VNAV systems, LNAV/VNAV NA below -15°C or above 54°C.
▲ Rwy 24 helicopter visibility reduction below 3/4 SM NA. Baro-VNAV and VDP NA when using HWV altimeter setting. Circling Rwy 15, 19 NA at night. When local altimeter setting not received, use HWV altimeter setting and increase LPV DA to 368 feet; increase LNAV/VNAV DA to 590 feet. Increase all MDAs 40 feet; and Circling visibility Cat C/D 1/4 SM. For inop ALS, increase LPV all Cats visibility to 2/3 SM, LNAV/VNAV visibility all Cats to 1 1/3 SM; LNAV Cats A/B visibility to 1 SM, Cats C/D visibility to 1 1/3 SM. For inop ALS when using HWV altimeter setting, increase LPV visibility all Cats to 2/3 SM; LNAV Cats A/B visibility to 1 SM.

MALSR

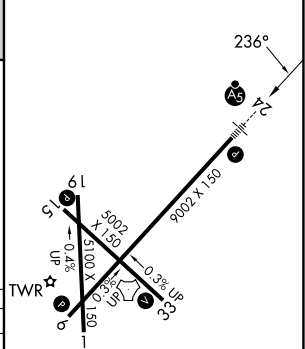


MISSED APPROACH:
Climb to 2600 direct ZATBO and hold.

ASOS 119.925	NEW YORK APP CON 125.975 343.65	SUFFOLK TOWER ★ 125.3 (CTAF) 236.6	GND CON 121.8 225.4
------------------------	---	--	-------------------------------



ELEV 66	TDZE 66
---------	---------



CATEGORY	A	B	C	D
LPV DA		338-3/4	272 (300-3/4)	
LNAV/VNAV DA		560-1	494 (500-1)	
LNAV MDA	560-3/4	494 (500-3/4)	560-1	494 (500-1)
CIRCLING	600-1 534 (600-1)	620-1 554 (600-1)	700-2 634 (700-2)	740-2 1/4 674 (700-2 1/4)

HIRL Rwy 6-24 **1**
 MIRL Rwy 15-33 **1**
 REIL Rws 6, 15, and 33 **1**

NE-2, 14 MAY 2026 to 11 JUN 2026

NE-2, 14 MAY 2026 to 11 JUN 2026