

# JUNEAU SEVEN DEPARTURE (OBSTACLE)

### TAKEOFF MINIMUMS

Rwys 8W, 26W: NA- water runway.

Rwy 8: 1000-3.

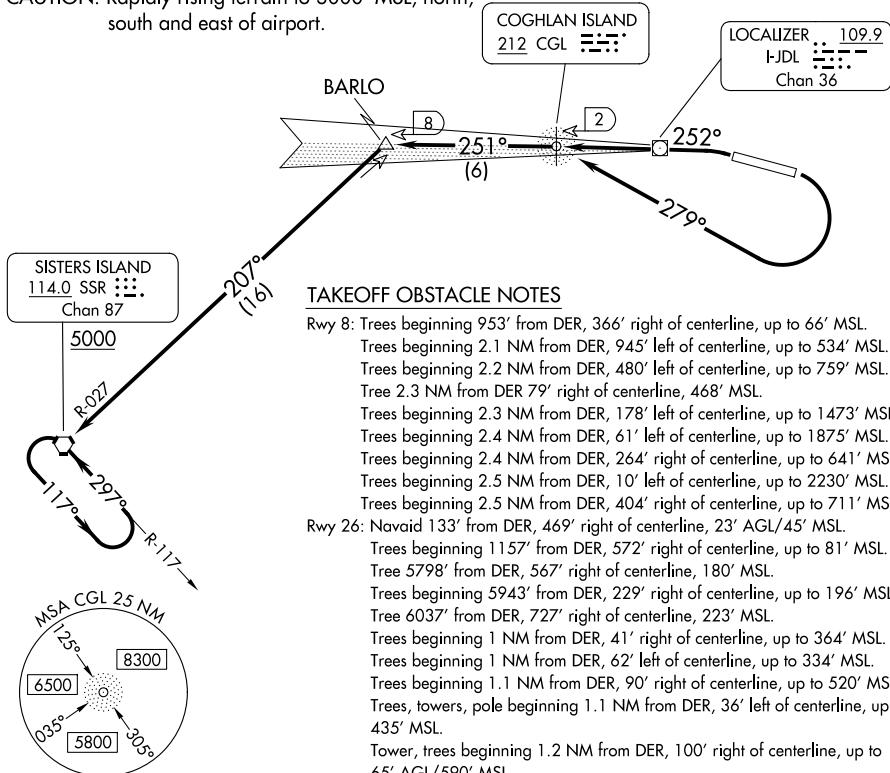
Rwy 26: 600-1 $\frac{7}{8}$  with minimum climb of 230'/NM to 800 or standard with minimum climb of 595 per NM to 800.

ADF or DME required.

ANCHORAGE CENTER 133.9  
 ATIS 135.2  
 GND CON 121.9  
 JUNEAU TOWER ★ 118.7 (CTAF) 278.3  
 JUNEAU RADIO 122.2

NOTE: Obtain ATC approval for this procedure if not issued as part of the IFR clearance.

CAUTION: Rapidly rising terrain to 3000' MSL, north, south and east of airport.



NOTE: Chart not to scale.

### DEPARTURE ROUTE DESCRIPTION

**TAKEOFF RUNWAY 8:** Climbing right turn as soon as practical. Climb in visual conditions direct CGL NDB or heading 279° to I-JDL west course/2 DME (visual conditions must be maintained from takeoff until established over CGL NDB or I-JDL west course/2 DME at or above 1000 MSL), thence. . . .

**TAKEOFF RUNWAY 26:** Climbing left turn heading 252° to CGL NDB or I-JDL West course/2 DME, thence. . . .

. . . . on I-JDL west course of 251° bearing from CGL NDB to BARLO /I-JDL 8 DME, then left turn on SSR VORTAC R-027 to SSR VORTAC, cross SSR VORTAC at or above 5000, continue climb in holding pattern to cross SSR VORTAC at or above MEA for route of flight.

# JUNEAU SEVEN DEPARTURE (OBSTACLE)