

APP CRS	Rwy Ldg	8457
070°	TDZE	25
	Apt Elev	25

RNAV (GPS) Z RWY 8

JUNEAU INTL (JNU)(PAJN)

RNP APCH - GPS.

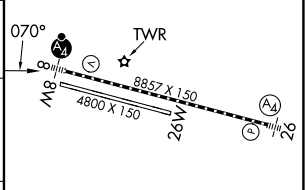
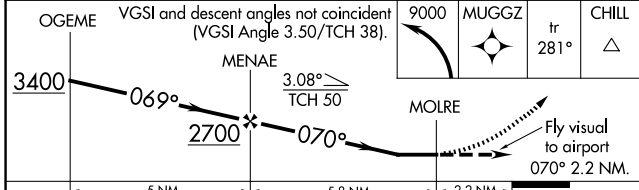
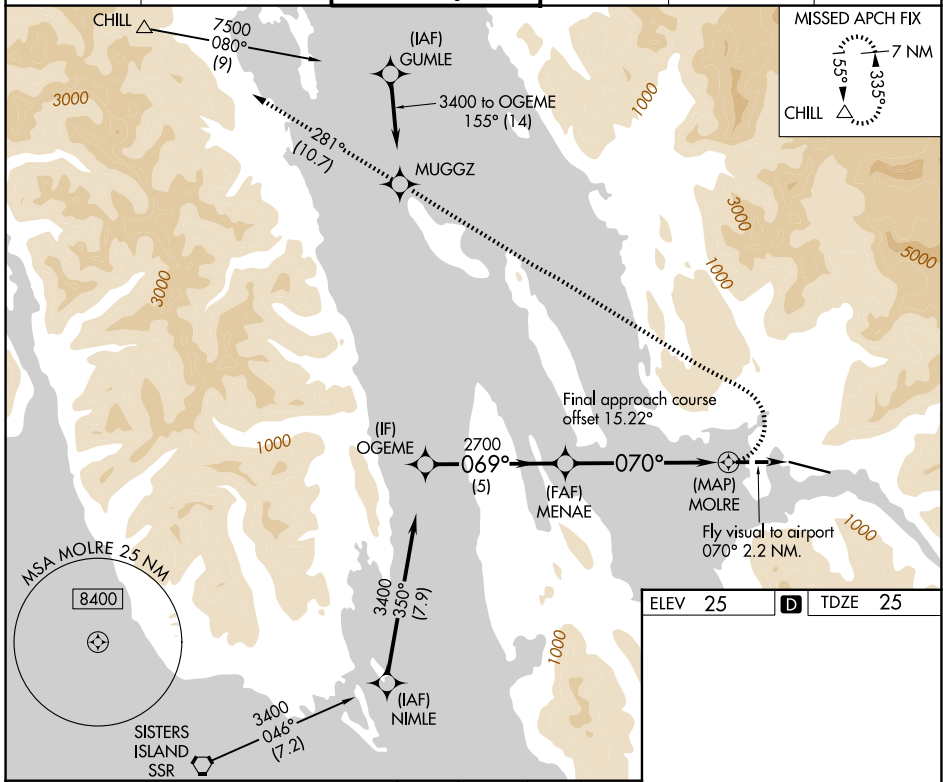
⚠ Rwy 8 helicopter visibility reduction below 1 SM NA. When local altimeter setting not received, procedure NA. Lead-in lights not aligned with final approach course. For inop lead-in lights, increase visibility to 4 SM.

⚠ 1°C Circling NA north of Rwy 8-26. Straight-in Rwy 8 at night and Circling Rwy 8, 26 at night, operational VGSI required, remain on or above VGSI glidepath until threshold.

MALSF

MISSED APPROACH: Climbing left turn to 9000 direct MUGGZ and on track 281° to CHILL and hold, continue climb-in-hold to 9000. *MISSED approach requires minimum climb of 363 feet per NM to 3200.

ATIS	ANCHORAGE CENTER	JUNEAU TOWER*	GND CON	JUNEAU RADIO	UNICOM
135.2	133.9	118.7 (CTAF) 278.3	121.9	122.2	122.95



	-5 NM		-5.8 NM		-2.2 NM	
CATEGORY	A	B	C	D		
LNAV MDA*	1880-2	1855 (1900-2)	NA			
LNAV MDA	2340-3	2315 (2400-3)	NA			
CIRCLING	2340-3	2315 (2400-3)	NA			

ELEV	25	TDZE	25
<p>RLLS Rwy 8</p> <p>REIL Rwy 26 Ⓛ</p> <p>HIRL Rwy 8-26 Ⓛ</p>			

AK, 14 MAY 2026 to 09 JUL 2026

AK, 14 MAY 2026 to 09 JUL 2026