

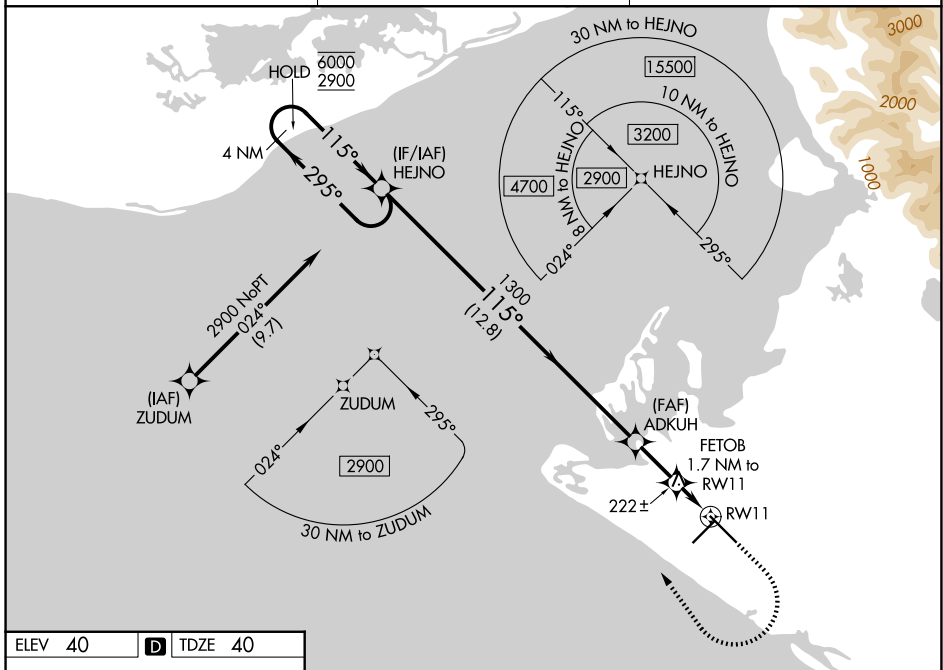
WAAS CH 86414 W11A	APP CRS 115°	Rwy Ldg TDZE Apt Elev	7732 40 40
--	------------------------	-----------------------------	---------------------------------------

RNAV (GPS) RWY 11

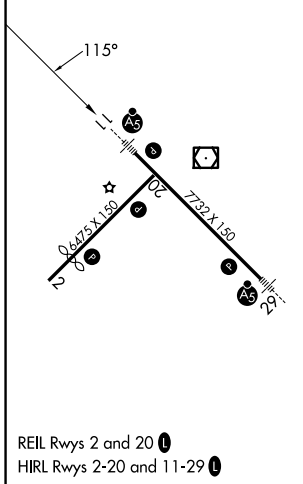
YAKUTAT (YAK) (PAYA)

RNP APCH - GPS.	MALSR	MISSED APPROACH: Climb to 600 then climbing right turn to 2900 direct HEJNO and hold.
<p>⚠ Circling Rwy 20 NA at night. When Yakutat altimeter setting not received, procedure NA. For uncompensated Baro-VNAV systems, LNAV/VNAV NA below -16° C or above 54° C.</p>		

ASOS 135.75	ANCHORAGE CENTER 119.0 263.1	JUNEAU RADIO 123.6 (CTAF) 0
-----------------------	--	---------------------------------------



ELEV 40	D	TDZE 40
---------	----------	---------



	HEJNO	ADKUH	FETOB	RWY 11
	4 NM Holding Pattern	1300	1.7 NM to RWY 11	1.2 NM to RWY 11
	600 2900	1300	640	
	GP 3.00° TCH 53	12.8 NM	2.1 NM	0.5 1.2 NM
CATEGORY	A	B	C	D
LPV DA		240/24	200 (200-½)	
LNAV/VNAV DA		445/50	405 (500-1)	
LNAV MDA	480/24	440 (500-½)	480/40	440 (500-¾)
CIRCLING	520-1 480 (500-1)	540-1 500 (500-1)	820-2¼ 780 (800-2¼)	820-2½ 780 (800-2½)

YAKUTAT, ALASKA
Amdt 5 08SEP22

59°30'N-139°40'W

YAKUTAT (YAK) (PAYA)

RNAV (GPS) RWY 11

AK, 14 MAY 2026 to 09 JUL 2026

AK, 14 MAY 2026 to 09 JUL 2026