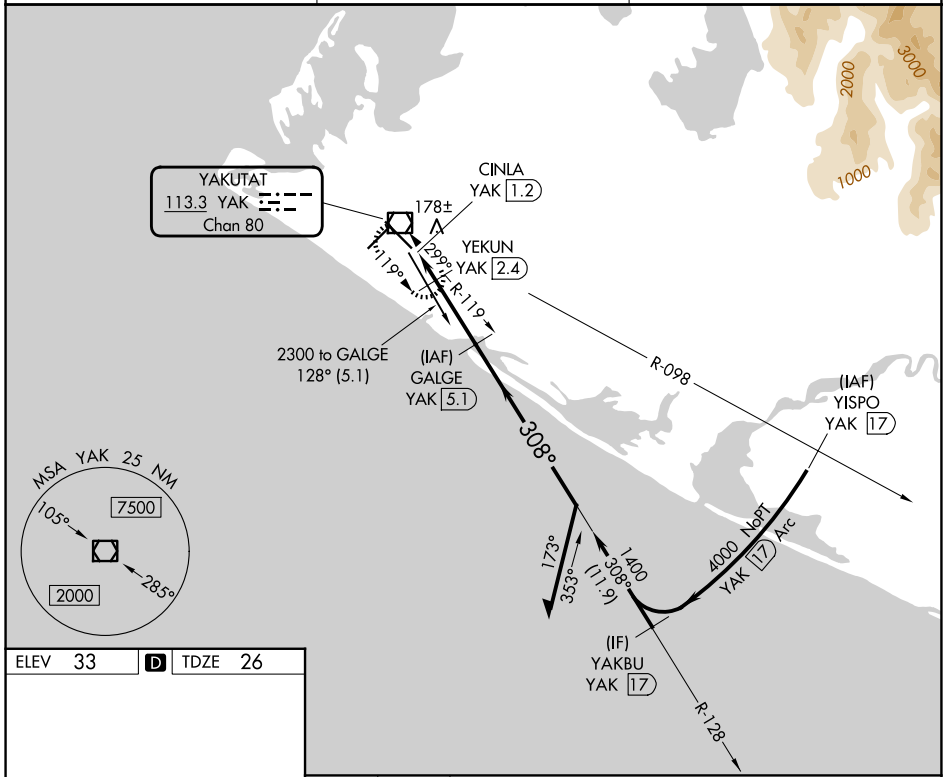


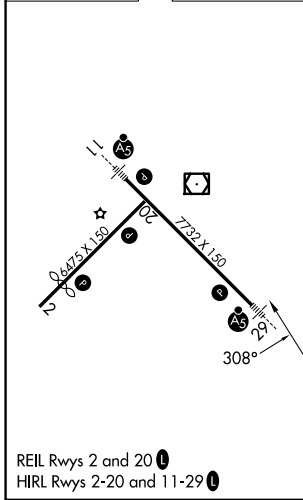
VOR/DME YAK <b>113.3</b> Chan <b>80</b>	APP CRS <b>308°</b>	Rwy Ldg <b>7732</b> TDZE <b>26</b> Apt Elev <b>33</b>
---	------------------------	---

# VOR/DME RWY 29 YAKUTAT (YAK) (PAYA)

<p><b>▽</b> Inop table does not apply to Cats A/B. <b>▲</b> For inop MALSR, increase Cats C/D visibility to 1½ mile.</p>	<p>MALSR</p>	<p>MISSED APPROACH: Climb to 2000 direct YAK VOR/DME and hold, continue climb-in-hold to 2000.</p>
<p>ASOS <b>135.75</b></p>	<p>ANCHORAGE CENTER <b>119.0 263.1</b></p>	<p>JUNEAU RADIO <b>123.6 (CTAF) 0</b></p>



ELEV 33	<b>D</b>	TDZE 26
---------	----------	---------



2000	YAK	VGSI and descent angles not coincident (VGSI Angle 3.00/TCH 51).			
		Remain within 10 NM			
YAK VOR/DME		YEKUN YAK 2.4	GALGE YAK 5.1		
CINLA YAK 1.2		3.00° TCH 52		1800	
540		1400		308°	
0.3		1.2 NM		2.7 NM	
CATEGORY	A	B	C	D	
S-29	440-1 414 (500-1)				
CIRCLING	500-1 467 (500-1)	520-1 487 (500-1)	620-1½ 587 (600-1½)	720-2¼ 687 (700-2¼)	

AK, 14 MAY 2026 to 09 JUL 2026

AK, 14 MAY 2026 to 09 JUL 2026