

LOC/DME I-CDV 110.7 Chan 44	APP CRS 275°	Rwy Ldg TDZE Apt Elev	7500 53 53
--	------------------------	-----------------------------	---------------------------------------

ILS or LOC RWY 27

MERLE K (MUDHOLE) SMITH (CDV) (PACV)

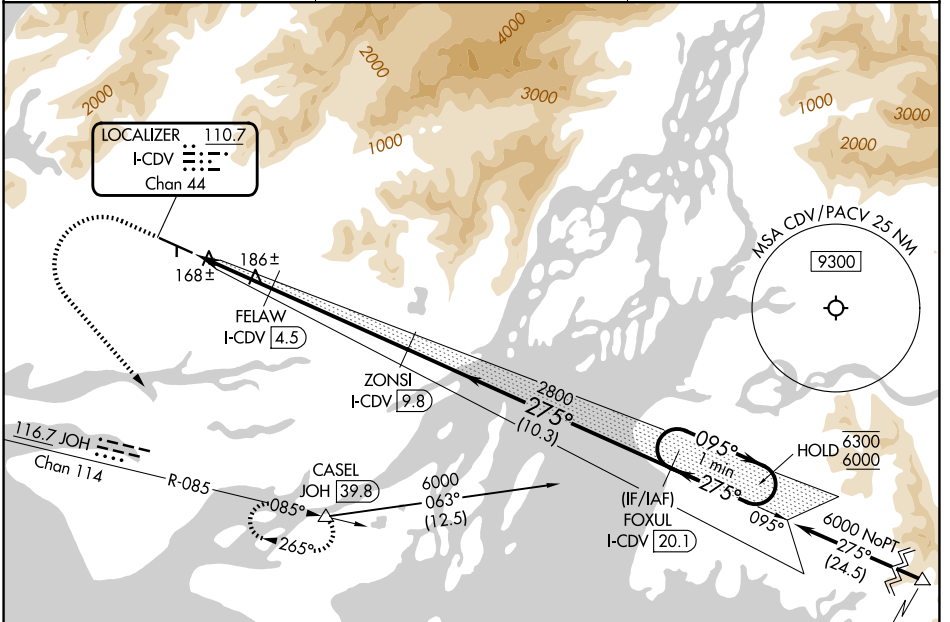
DME required. From CASEL: RNAV 1-GPS required.

⚠ Circling NA north of Rwy 9-27.
Circling Rwy 16, 34 NA at night.

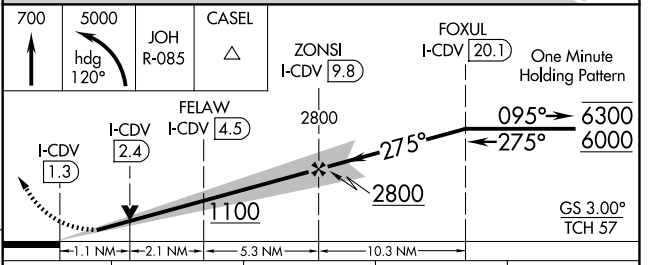
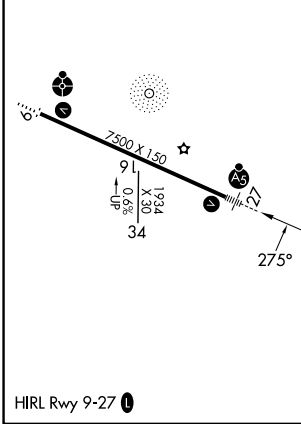


MISSED APPROACH: Climb to 700 then climbing left turn to 5000 on heading 120° and on JOH VOR/DME R-085 to CASEL/JOH 39.8 DME and hold, continue climb-in-hold to 5000.

ASOS 134.8	ANCHORAGE CENTER 119.3 133.6 269.4	JUNEAU RADIO 122.2 123.6 (CTAF) 0
----------------------	--	---



ELEV 53	D	TDZE 53
---------	----------	---------



CATEGORY	A	B	C	D
S-ILS 27	328/24 275 (300-1/2)			
S-LOC 27	440/24	387 (400-1/2)	440/40	387 (400-3/4)
CIRCLING	480-1 427 (500-1)	520-1 467 (500-1)	520-1 1/2 467 (500-1 1/2)	1540-3 1487 (1500-3)

AK, 14 MAY 2026 to 09 JUL 2026

AK, 14 MAY 2026 to 09 JUL 2026