

EEEGL FIVE DEPARTURE

AL-1196 [USAF]

ELMENDORF AFB (PAED)

ANCHORAGE, ALASKA

ATIS ★ 124.3 273.5 ▲
 CLNC DEL 128.8 306.925
 GND CON 121.8 275.8
 TOWER 127.2 352.05
 ANCHORAGE DEP CON 118.6 290.5

▲ SKWEN
 N62°03.10'
 W151°06.26'

▲ GERDE
 N61°53.90'
 W153°23.79'

▲ SPAIR
 N60°37.16'
 W154°19.90'

▲ HOJOE
 N62°21.38'
 W147°11.51'

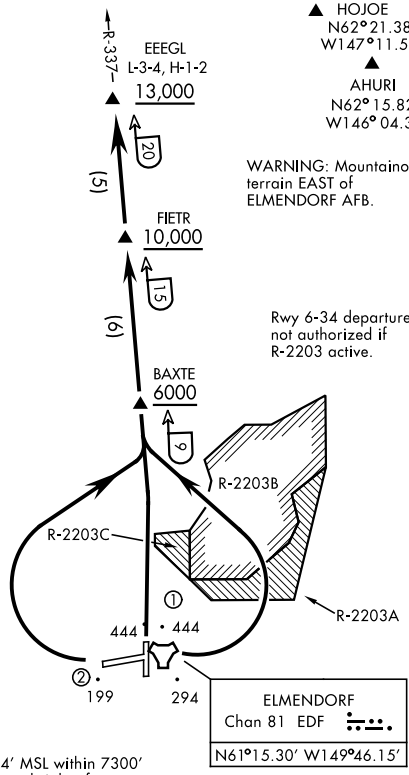
▲ AHURI
 N62°15.82'
 W146°04.39'

WARNING: Mountainous terrain EAST of ELMENDORF AFB.

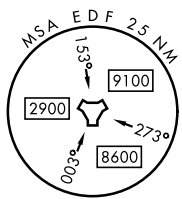
Rwy 6-34 departures not authorized if R-2203 active.

Rwy	Knots	60	120	180	240	300	360
6	V/V(fpm)	601	1202	1803	2404	3005	3606
24	V/V(fpm)	581	1162	1743	2324	2905	3486
34	V/V(fpm)	656	1312	1968	2624	3280	3936

ATC Climb Rate to 13,000



- ① Numerous trees to 444' MSL within 7300' of DER and 1850' left and right of centerline.
- ② 210' terrain 930' from DER, 730' right of centerline and 281' MSL (21' AGL) trees 4100' from DER, 1230' right of centerline.



NOTE: Chart not to scale

DEPARTURE ROUTE DESCRIPTION

TAKEOFF RUNWAY 6: Climbing left turn to FL200, intercept EDF R-337 outbound. Cross BAXTE at or above 6000, cross FIETR at or above 10,000, cross EEEGL at or above 13,000. Upon leaving 13,000, proceed on course. Maintain FL200 or ATC assigned altitude.

TAKEOFF RUNWAY 24: Climbing right turn to FL200, intercept EDF TACAN R-337 outbound. Cross FIETR at or above 10,000, cross EEEGL at or above 13,000. Upon leaving 13,000, proceed on course. Maintain FL200 or ATC assigned altitude.

TAKEOFF RUNWAY 34: Climb to FL200, intercept EDF R-337 outbound. Cross BAXTE at or above 6000, cross FIETR at or above 10,000, cross EEEGL at or above 13,000. Upon leaving 13,000, proceed on course. Maintain FL200 or ATC assigned altitude.

EEEGL FIVE DEPARTURE

Orig 20APR23

ANCHORAGE, ALASKA
 ELMENDORF AFB (PAED)

AK, 14 MAY 2026 to 09 JUL 2026

AK, 14 MAY 2026 to 09 JUL 2026