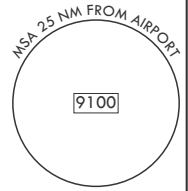
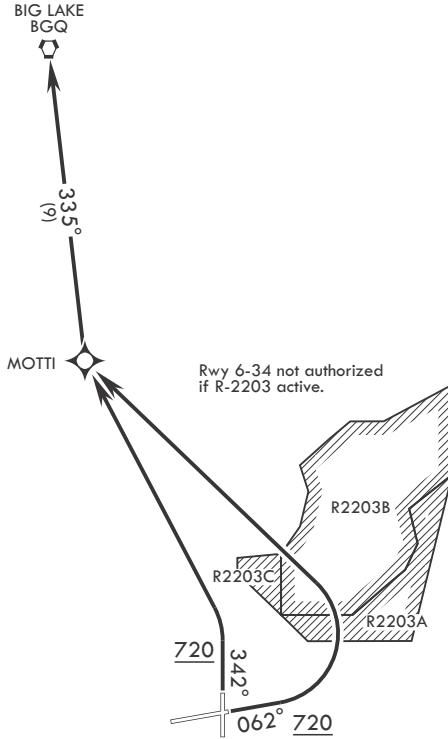


# ELMENDORF THREE DEPARTURE (RNAV) (EDF3.BGQ)

ANCHORAGE, ALASKA

ATIS \* 124.3 273.5  
 CLNC DEL 128.8 306.925  
 GND CON 121.8 275.8  
 TOWER 127.2 352.05  
 ANCHORAGE APP CON/DEP CON  
 118.6 290.5

RNAV1-GPS  
 RADAR required for non-GPS equipped  
 aircraft.



## DEPARTURE ROUTE DESCRIPTION

**TAKEOFF RWY 6:** Climb heading 062° to 720, then turn left direct MOTTI, thence via 335° track to BGQ VORTAC at assigned ATC altitude.

**TAKEOFF RWY 34:** Climb heading 342° to 720, then turn left direct MOTTI, thence via 335° track to BGQ VORTAC at assigned altitude.

# ELMENDORF THREE DEPARTURE (RNAV) (EDF3.BGQ)

ANCHORAGE, ALASKA  
ELMENDORF AFB (PAED)

AK, 14 MAY 2026 to 09 JUL 2026

AK, 14 MAY 2026 to 09 JUL 2026