

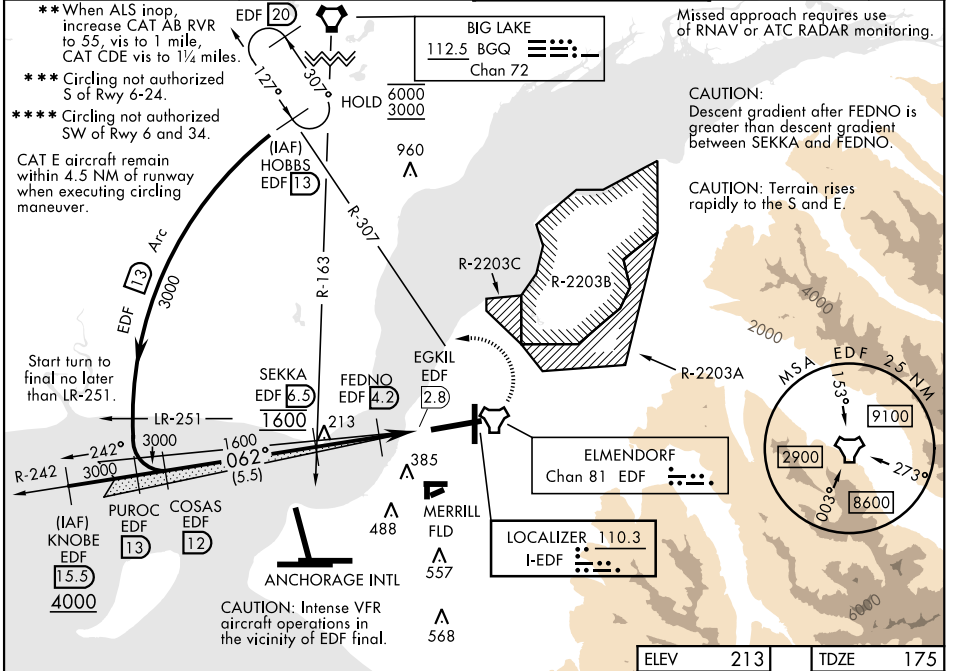
# ILS Y or LOC/DME Y RWY 6

LOC I-EDF <b>110.3</b>	APCH CRS <b>062°</b>	Rwy Idg <b>10,000</b>
		TDZE <b>175</b>
		Arprt Elev <b>213</b>

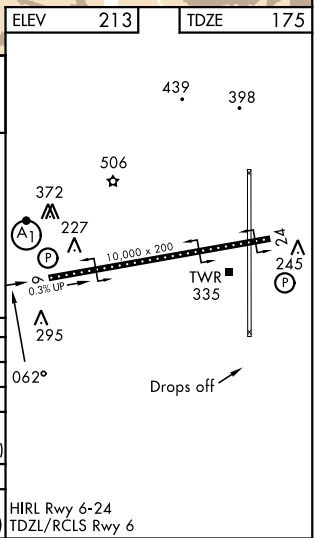
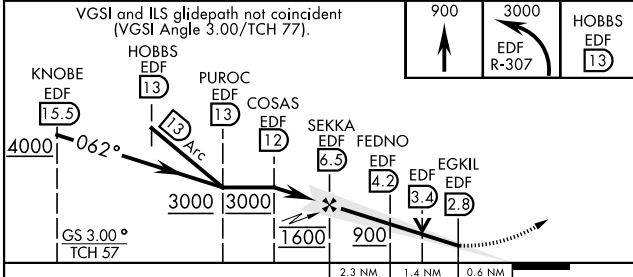
[USAF]

ELMENDORF AFB (PAED)

<p>▼ * When TDZ/RCLS lights inop increase RVR to 24. When ALS inop, increase RVR to 40, vis to ¼ mile.</p>	<p>ALSF-1 (A1)</p>	<p>MISSED APPROACH: Climb to 900, then climbing left turn to 3000 via EDF R-307 to HOBBS and hold.</p>		
		<p>ATIS ★ <b>124.3 273.5</b></p>	<p>ANCHORAGE APP CON <b>118.6 290.5</b></p>	<p>TOWER <b>127.2 352.05</b></p>



EMERG SAFE ALT 100 NM 15,300



	A	B	C	D	E
S-ILS 6*	375/18		200	[200-½]	
S-LOC 6**	600/24	425 (400-½)	600/40	425 (400-¾)	
CIRCLING ***	840-1	627 (700-1)	840-1¾ 627 (700-1¾)	840-2 627 (700-2)	940-2½ 727 (800-2½)
RWY 34 CIRCLING MINIMUMS					
CIRCLING ****	840-1	627 (700-1)	920-2 707 (800-2)	1020-2½ 807 (900-2½)	1480-3 1267 (1300-3)

HIRL Rwy 6-24  
 TDZL/RCLS Rwy 6

# ILS Y or LOC/DME Y RWY 6

AK, 14 MAY 2026 TO 09 JUL 2026

AK, 14 MAY 2026 TO 09 JUL 2026