

ANCHORAGE, ALASKA

RNAV (GPS) RWY 6

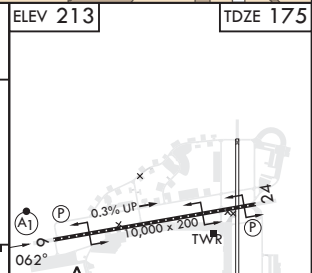
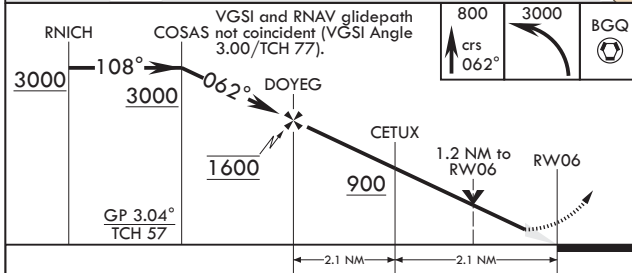
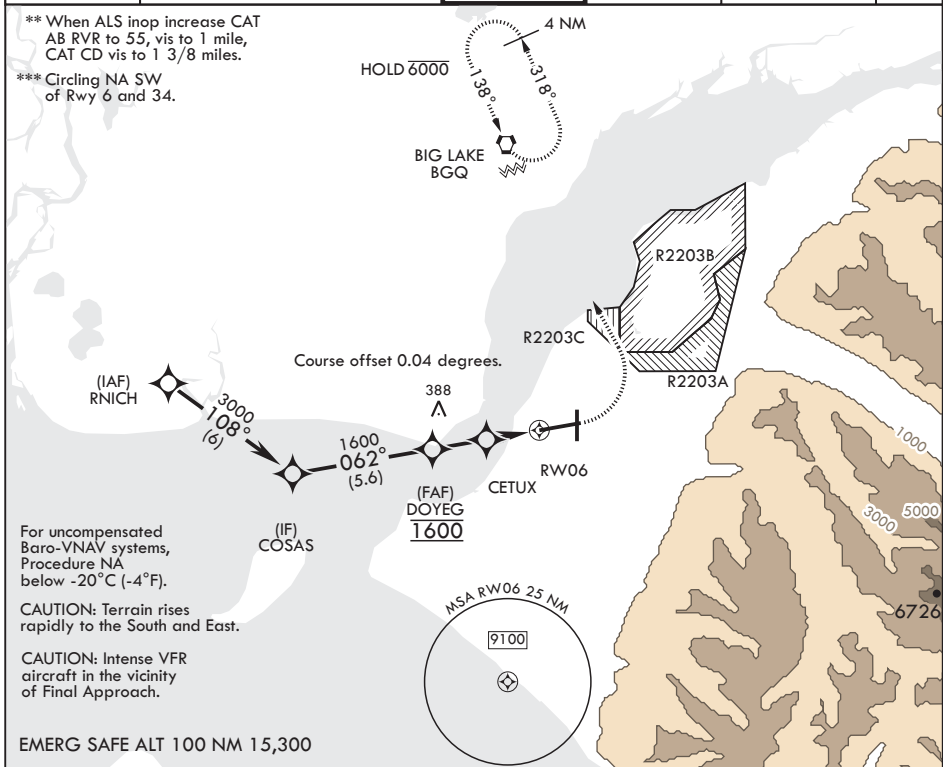
| | | |
|----------|------------|--------|
| APCH CRS | Rwy Idg | 10,000 |
| 062° | TDZE | 175 |
| | Arprt Elev | 213 |

(-USAF)

ELMENDORF AFB (PAED)

| | | |
|---|--------|--|
| RNP APCH | ALSF-1 | MISSED APPROACH: Climb to 800 then climbing left turn to 3000 direct BGQ and hold. |
| GPS required. | | |
| * When ALS inop increase RVR to 60, vis to 1 1/8 miles. | | |

| | | | | | |
|-------------|---------------------------|--------------|-------------|---------------|-----|
| ATIS* | ANCHORAGE APP CON/DEP CON | TOWER | GND CON | CLNC DEL | PAR |
| 124.3 273.5 | 118.6 290.5 | 127.2 352.05 | 121.8 275.8 | 128.8 306.925 | |



| CATEGORY | A | B | C | D |
|---------------|--------------------|-----|--------------------|-----------------------|
| LNAV/VNAV DA* | 561/35 | 386 | (400-¾) | 576/40 401 (400-¾) |
| LNAV MDA** | 640/24 465 (500-½) | | 640/50 465 (500-1) | |
| CIRCLING*** | 840-1 627 (700-1) | | 920-2 707 (800-2) | 1020-2½ 807 (900-2½) |

| | |
|---------------|----|
| HIRL Rwy 6-24 | 24 |
| TDZL/CL Rwy 6 | |

ANCHORAGE, ALASKA
Amdt 5 25JAN24

61°15'N - 149°48'W

ELMENDORF AFB (PAED)

RNAV (GPS) RWY 6

AK, 14 MAY 2026 to 09 JUL 2026

AK, 14 MAY 2026 to 09 JUL 2026