

# TACAN RWY 6

TACAN Chan <b>81</b>	APCH CRS <b>062°</b>	Rwy Ldg TDZE <b>10,000</b> <b>175</b> Arprt Elev <b>213</b>
----------------------	----------------------	---

[USAF]

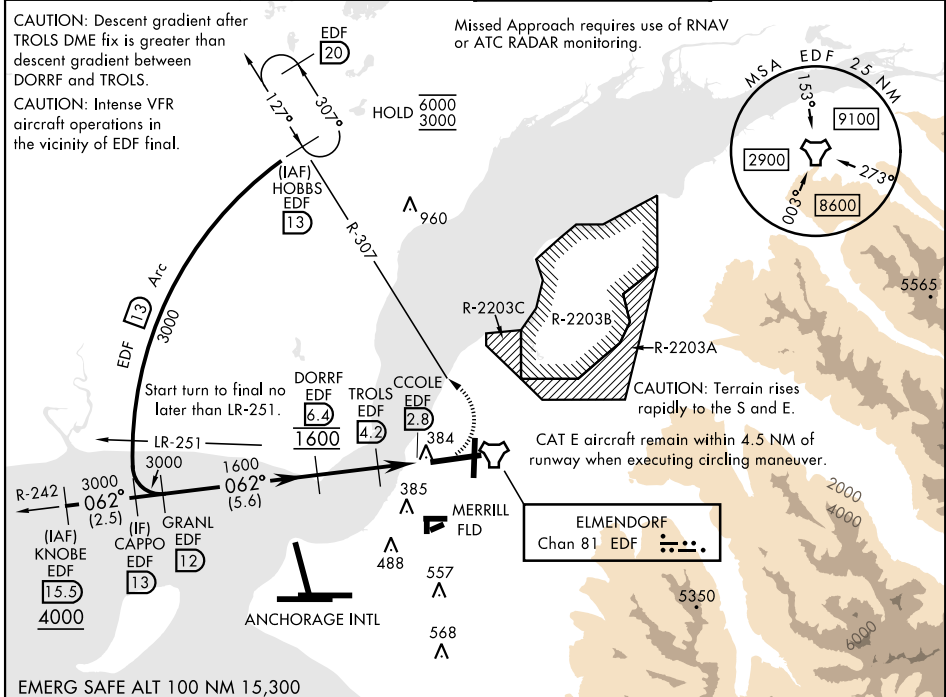
ELMENDORF AFB (PAED)

▼ \* When ALS inop, increase CAT AB RVR to 55, vis to 1 mile, CAT CDE vis to 1 1/2 miles.  
 \*\* Circling not authorized south of Rwy 6-24.  
 \*\*\* Circling not authorized SW of Rwy 6 and 34.

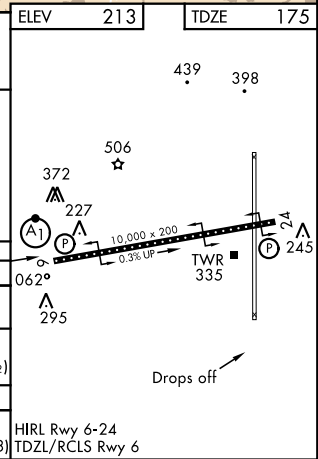
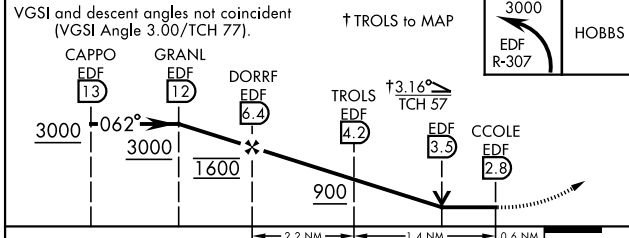
ALSF-1

MISSED APPROACH: Climbing left turn to 3000 via EDF R-307 to HOBBS and hold, continue climb-in-hold to 3000.

ATIS ★ <b>124.3 273.5</b>	ANCHORAGE APP CON <b>118.6 290.5</b>	TOWER <b>127.2 352.05</b>	GND CON <b>121.8 275.8</b>	PAR
------------------------------	---	------------------------------	-------------------------------	-----



EMERG SAFE ALT 100 NM 15,300



CATEGORY	A	B	C	D	E
S-6 *	640/24	465 (500-1/2)	640/50	465	(500-1)
CIRCLING **	840-1	627 (700-1)	840-1 3/4 627 (700-1 3/4)	840-2 627 (700-2)	940-2 1/2 727 (800-2 1/2)
RWY 34 CIRCLING MINIMUMS					
CIRCLING ***	840-1	627 (700-1)	920-2 707 (800-2)	1020-2 1/2 807 (900-2 1/2)	1480-3 1267 (1300-3)

# TACAN RWY 6

AK, 14 MAY 2026 to 09 JUL 2026

AK, 14 MAY 2026 to 09 JUL 2026