

TACAN-A

TACAN Chan 81	EDF 155°	APCH CRS 155°	Rwy Idg TDZE Arprt Elev N/A N/A 213
----------------------	-----------------	----------------------	--

[USAF]

ELMENDORF AFB (EDF) (PAED)

⚠ *Circling not authorized to Rwy 16-34. Circling not authorized S of Rwy 6-24 centerline.

MISSED APPROACH: Climbing left turn to 7000 direct CRZAN/EDF 6 DME, and left turn direct BRNLY/EDF 15 DME, and hold, continue climb in hold to 7000.

ATIS ★ 124.3 273.5	ANCHORAGE APP CON 118.6 290.5	TOWER 127.2 352.05	GND CON 121.8 275.8	PAR
---------------------------	--------------------------------------	---------------------------	----------------------------	-----

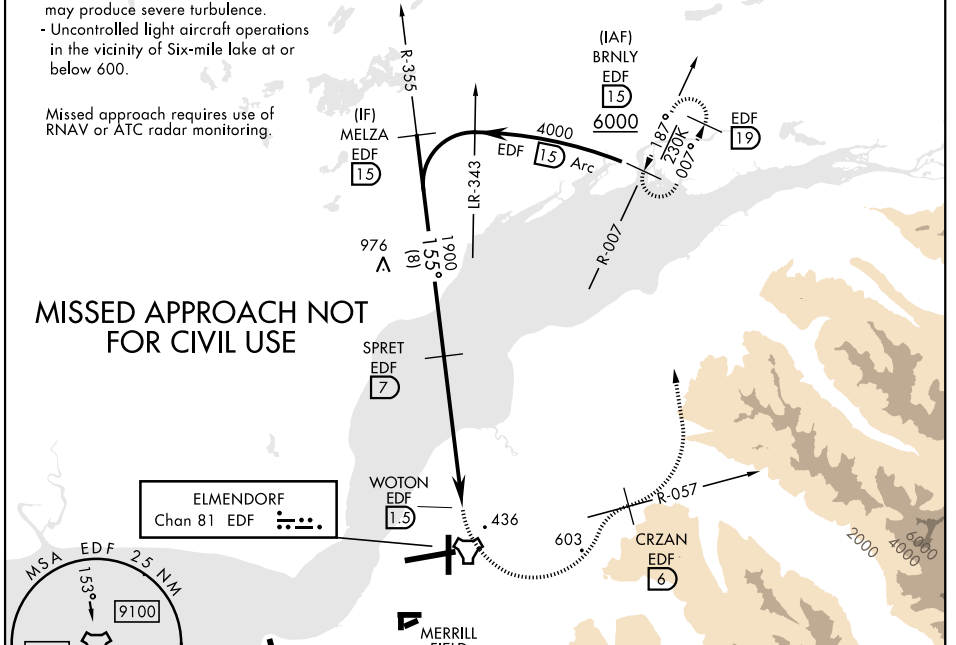
Knots	60	120	180	240	300	360
V/V(fpm)	594	1188	1782	2376	2970	3564
Min climb of 594 ft/NM to 6000 - Controlling Obstacle Unk						

If unable to meet the climb gradient, see TACAN Z RWY 16.

CAUTION:

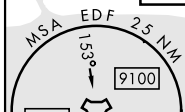
- Terrain rises rapidly to the S and E.
- Winds in vicinity of higher terrain may produce severe turbulence.
- Uncontrolled light aircraft operations in the vicinity of Six-mile lake at or below 600.

Missed approach requires use of RNAV or ATC radar monitoring.

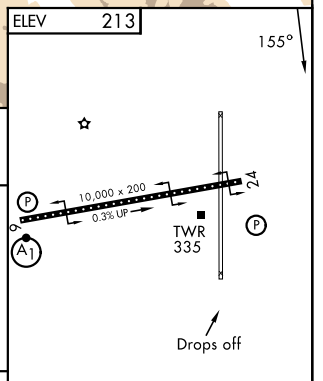
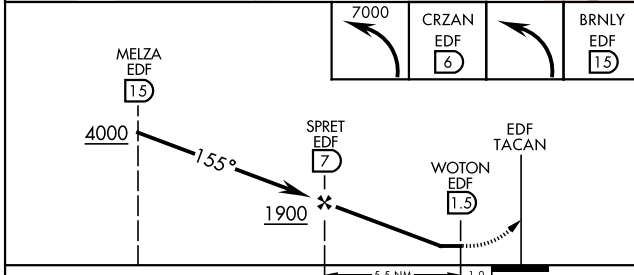


MISSED APPROACH NOT FOR CIVIL USE

ELMENDORF Chan 81 EDF



EMERG SAFE ALT 100 NM 15,300



CATEGORY	A	B	C	D	E
CIRCLING*	NOT AUTHORIZED				940-2½ 727 (800-2½)

TACAN-A

AK, 14 MAY 2026 to 09 JUL 2026

AK, 14 MAY 2026 to 09 JUL 2026