

TACAN Y RWY 16

TACAN Chan 81	APCH CRS 133°	Rwy Ldg TDZE 213 Arprt Elev 213	[USAF]	ELMENDORF AFB (PAED)
----------------------	----------------------	--	--------	----------------------

⚠ * Circling not authorized S of Rwy 6-24.
 CAT E aircraft remain within 4.5 NM of runway when executing circling maneuver.

MISSED APPROACH: Climbing left turn to 6800 direct CRZAN, and left turn direct BRNLY, and left turn direct LUBEE.

ATIS ★ 124.3 273.5	ANCHORAGE APP CON 118.6 290.5	TOWER 127.2 352.05	GND CON 121.8 275.8	PAR
------------------------------	---	------------------------------	-------------------------------	-----

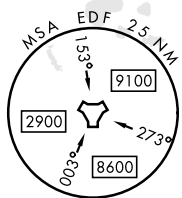
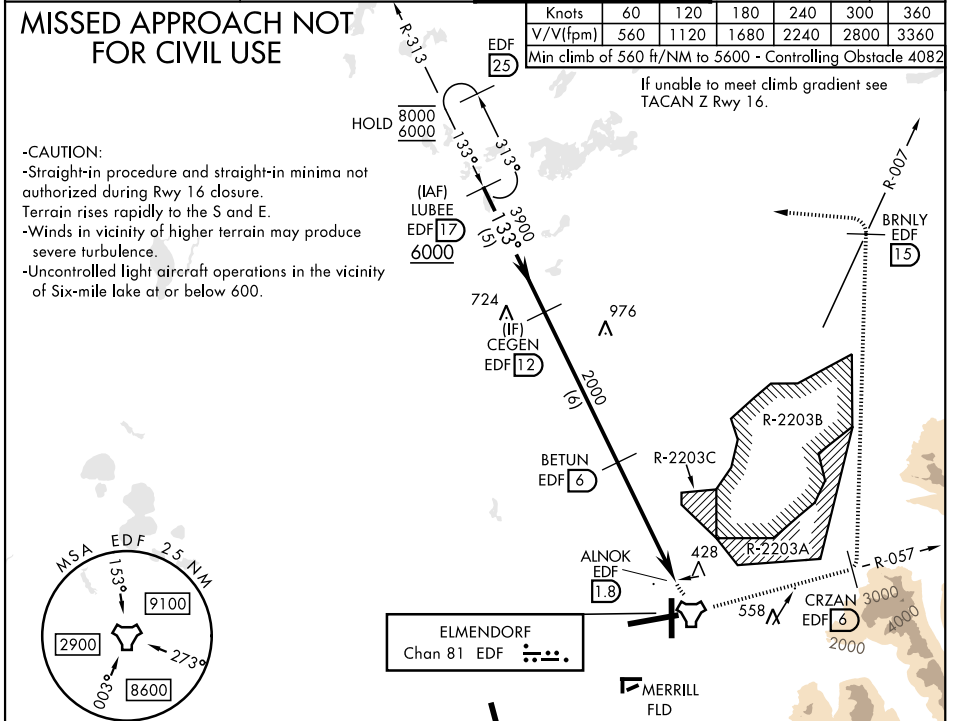
MISSED APPROACH NOT FOR CIVIL USE

- CAUTION:**
- Straight-in procedure and straight-in minima not authorized during Rwy 16 closure.
 - Terrain rises rapidly to the S and E.
 - Winds in vicinity of higher terrain may produce severe turbulence.
 - Uncontrolled light aircraft operations in the vicinity of Six-mile lake at or below 600.

Knots	60	120	180	240	300	360
V/V(fpm)	560	1120	1680	2240	2800	3360

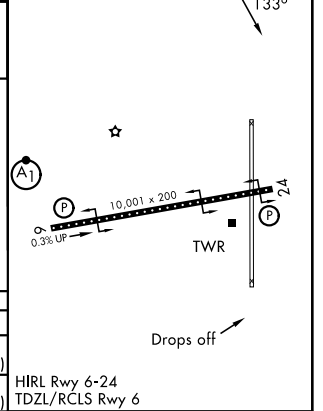
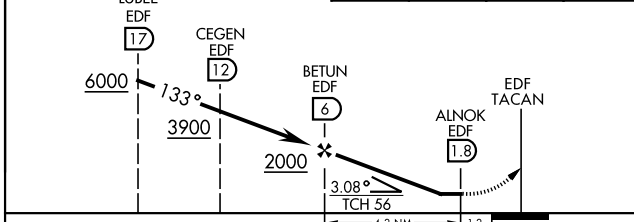
Min climb of 560 ft/NM to 5600 - Controlling Obstacle 4082

If unable to meet climb gradient see TACAN Z Rwy 16.



EMERG SAFE ALT 100 NM 15,300	ELEV 213	TDZE 213
------------------------------	----------	----------

VGSI and descent angles not coincident (VGSI Angle 3.00/TCH 47).



CATEGORY	A	B	C	D	E
S-16	NOT AUTHORIZED				680-1 3/8 467 (500-1 3/8)
CIRCLING *	NOT AUTHORIZED				860-2 1/4 647 (700-2 1/4)

HRL Rwy 6-24
TDZL/RCLS Rwy 6

AK, 14 MAY 2026 to 09 JUL 2026

AK, 14 MAY 2026 to 09 JUL 2026