

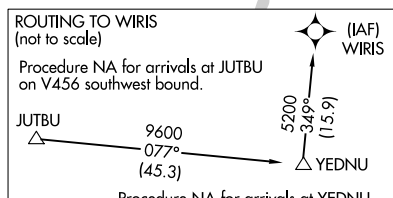
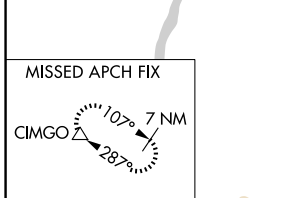
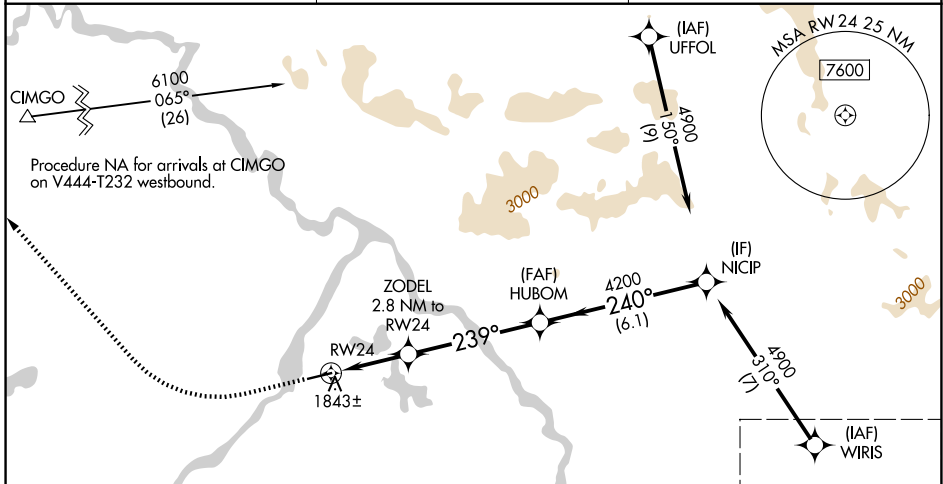
WAAS CH 48924 W24A	APP CRS 239°	Rwy Ldg TDZE Apt Elev	5100 1719 1720
--	------------------------	-----------------------------	---

RNAV (GPS) RWY 24

NORTHWAY (ORT)(PAOR)

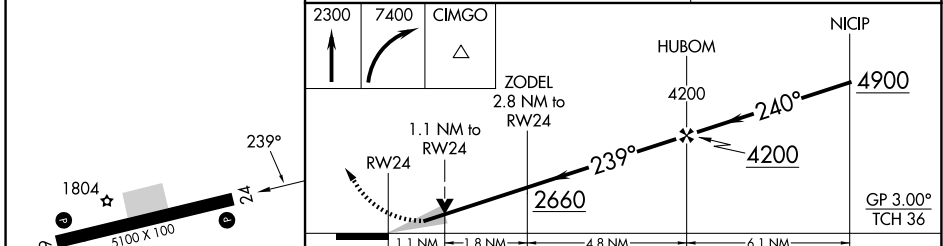
RNP APCH - GPS.	MISSED APPROACH: Climb to 2300 then climbing right turn to 7400 direct CIMGO and hold, continue climb-in-hold to 7400.
For uncompensated Baro-VNAV systems, LNAV/VNAV NA below -24°C or above 54°C. -48°C	

ASOS 135.4	ANCHORAGE CENTER 126.55 323.0	NORTHWAY RADIO 123.6(CTAF) 0
----------------------	---	--



SEE INSET FOR ROUTING TO WIRIS

ELEV 1720	TDZE 1719
-----------	-----------



CATEGORY	A	B	C	D
LPV DA	1969-3/4 250 (300-3/4)			
LNAV/VNAV DA	2004-7/8 285 (300-7/8)			
LNAV MDA	2100-1 381 (400-1)		2100-1 1/8 381 (400-1 1/8)	
CIRCLING	2160-1 440 (500-1)	2180-1 460 (500-1)	2240-1 1/2 520 (600-1 1/2)	2340-2 620 (700-2)

AK, 14 MAY 2026 to 09 JUL 2026

AK, 14 MAY 2026 to 09 JUL 2026