

DELTA JUNCTION/FORT GREELY, ALASKA

VOR/DME or TACAN RWY 19

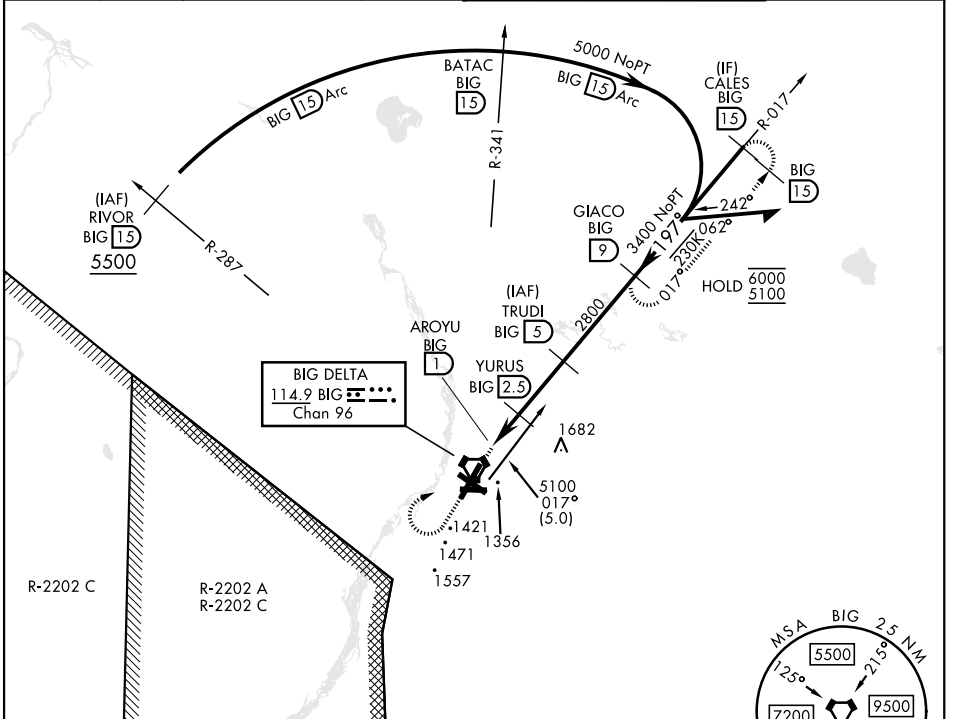
VORTAC BIG 114.9 Chan 96	APCH CRS 197°	Rwy Idg TDZE 1239 Arpt Elev 1285
--	-------------------------	--

[USA]

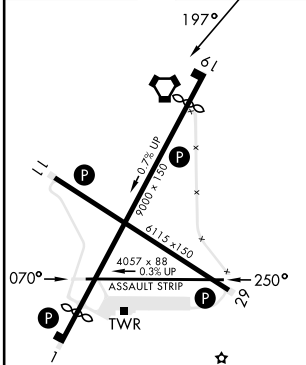
ALLEN AAF (PABI)

⚠ *Circling not authorized East of Rwy 1-19. MISSED APPROACH: Climb to 2100, then climbing right turn to 5100 via BIG R-017 to GIACO/9 DME and hold, continue climb in hold to 5100.

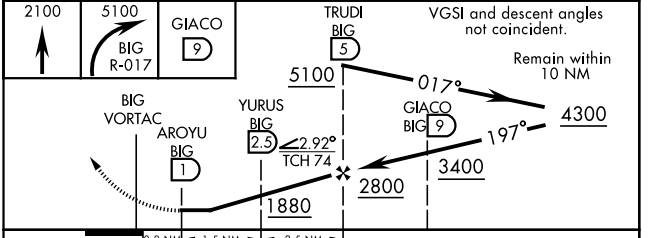
ATIS 132.075	ASOS 135.65	ANCHORAGE CENTER 135.3 322.5	CTAF 122.9	TOWER ★ 119.8 235.775 40.8 (E) FM	GND CON 118.225 251.05
------------------------	-----------------------	--	----------------------	---	----------------------------------



ELEV	1285	TDZE	1239
------	------	------	------



HIRL Rwy 1-19 and 11-29
MIRL Rwy 070°-250°
REIL Rwy 11-29



CATEGORY	A	B	C	D
S-19	1660-1 421 (400-1)		1660-1½ 421 (400-1½)	
CIRCLING *	1740-1 455 (500-1)	1780-1 495 (500-1)	1860-1½ 575 (600-1½)	2040-2½ 755 (800-2½)

DELTA JUNCTION/FORT GREELY, ALASKA

64°00'N-145°43'W

ALLEN AAF (PABI)

Amtd 3 07AUG25

VOR/DME or TACAN RWY 19

AK, 14 MAY 2026 to 09 JUL 2026

AK, 14 MAY 2026 to 09 JUL 2026