

VOR/DME GKN 115.6 Chan 103	APP CRS 148°	Rwy Ldg 5001 TDZE 1586 Apt Elev 1586
--	------------------------	---

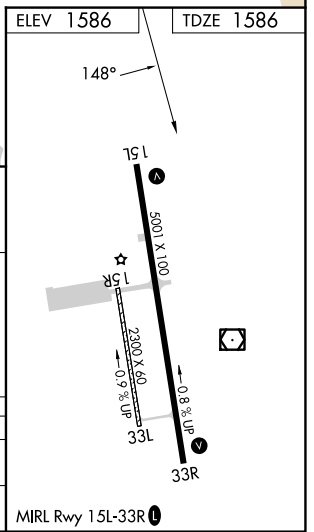
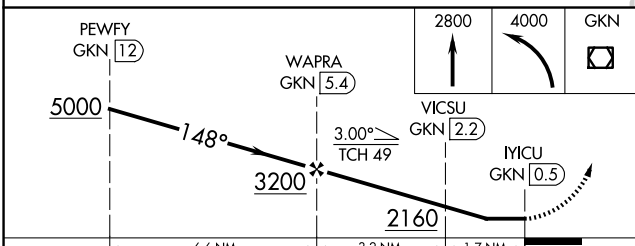
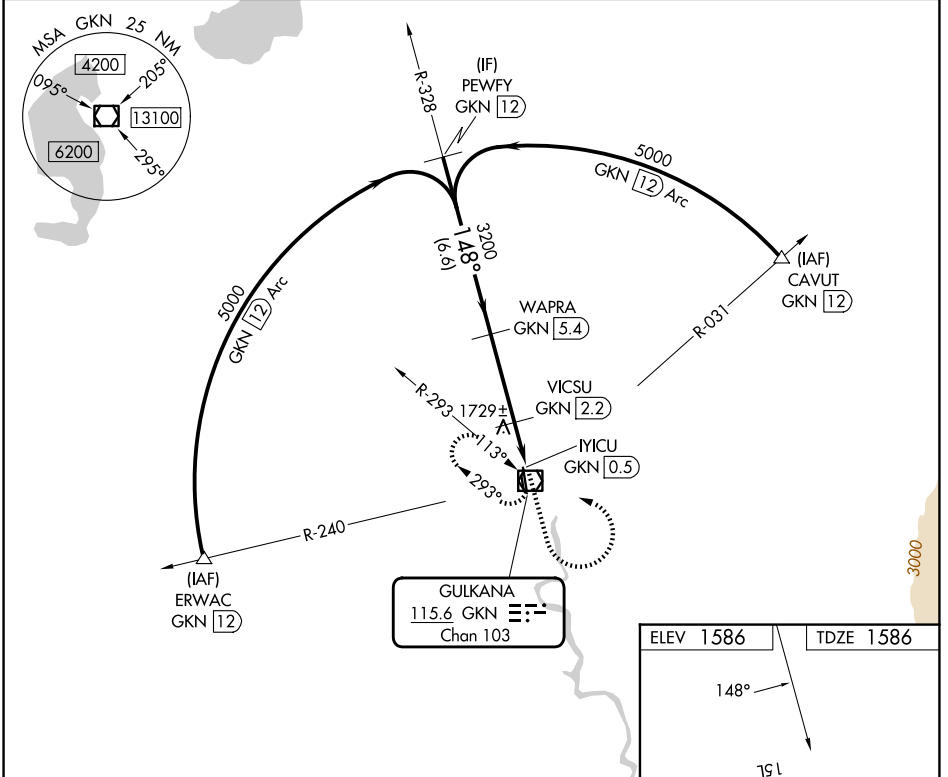
VOR RWY 15L

GULKANA (GKN) (PAGK)

DME required.
 ⚠ Circling Rwy 15R, 33L NA at night. Rwy 15L helicopter visibility reduction below 3/4 SM NA. When local altimeter setting not received, procedure NA.

MISSED APPROACH: Climb to 2800 then climbing left turn to 4000 direct GKN VOR/DME and hold, continue climb-in-hold to 4000.

ASOS 134.85	ANCHORAGE CENTER 119.5 317.5	CTAF 122.9 0
-----------------------	--	------------------------



CATEGORY	A	B	C	D
S-15L	2040-1	454 (500-1)	2040-1 3/8	454 (500-1 3/8)
CIRCLING	2040-1	2080-1	2080-1 1/2	2200-2
	454 (500-1)	494 (500-1)	494 (500-1 1/2)	614 (700-2)

AK, 14 MAY 2026 to 09 JUL 2026

AK, 14 MAY 2026 to 09 JUL 2026