

VOR/DME TKA 116.2 Chan 109	APP CRS 352°	Rwy Ldg TDZE Apt Elev 3500 363 365
--	------------------------	--

VOR RWY 1

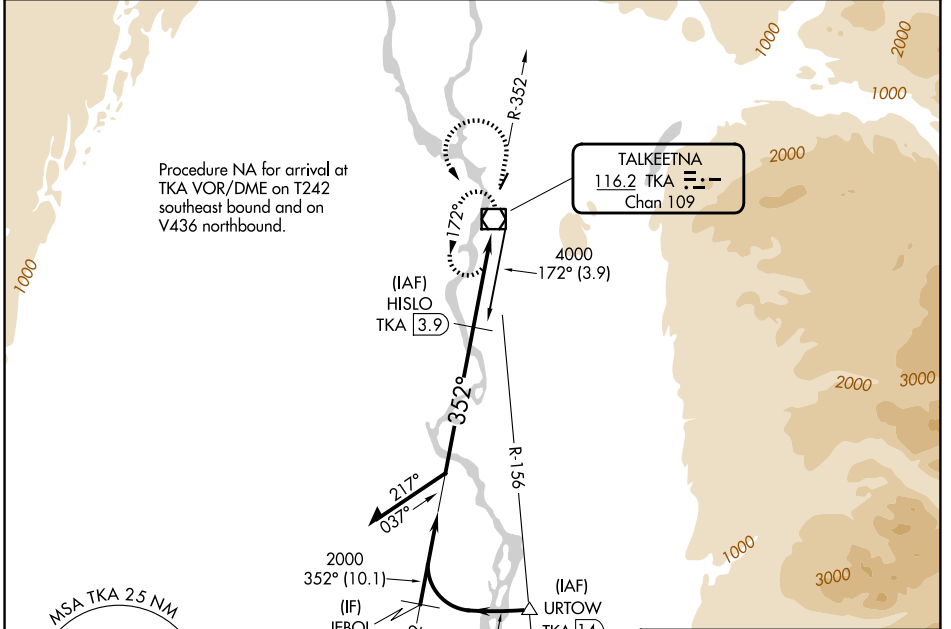
TALKEETNA (TKA)(PATK)

DME required.

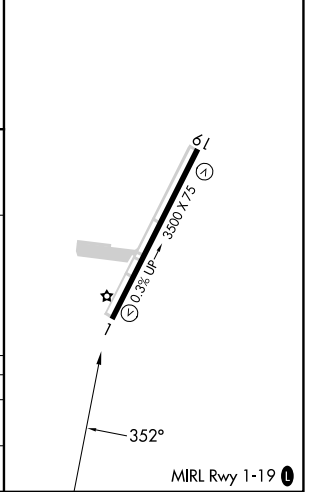
⚠ Circling NA east of Rwy 1-19.
⚠ Rwy 1 helicopter visibility reduction below 1 SM NA.
⚠ -28°C Straight-in Rwy 1 NA at night, Circling Rwy 1 NA at night.

MISSED APPROACH: Climb to 2100 on TKA VOR/DME R-352 then climbing left turn to 3200 direct TKA VOR/DME and hold.

AFIS 135.2	ANCHORAGE CENTER 125.55 254.3	TALKEETNA RADIO 123.6 (CTAF) 0	UNICOM 123.0
----------------------	---	--	------------------------



ELEV 365	TDZE 363
----------	----------



Visual Segment - Obstacles.	HISLO TKA [3.9]	2100	3200	TKA
Remain within 10 NM		TKA R-352		
2500	172°	TKA VOR/DME	TKA [1.2]	
2000	352°			
		5.1 NM		

CATEGORY	A	B	C	D
S-1	1040-1	677 (700-1)	1040-1 $\frac{7}{8}$	677 (700-1 $\frac{7}{8}$)
CIRCLING	1040-1	675 (700-1)	1040-2 675 (700-2)	1200-2 $\frac{3}{4}$ 835 (900-2 $\frac{3}{4}$)

AK, 14 MAY 2026 to 09 JUL 2026

AK, 14 MAY 2026 to 09 JUL 2026