

(HEMRO1.HEMRO) 25275

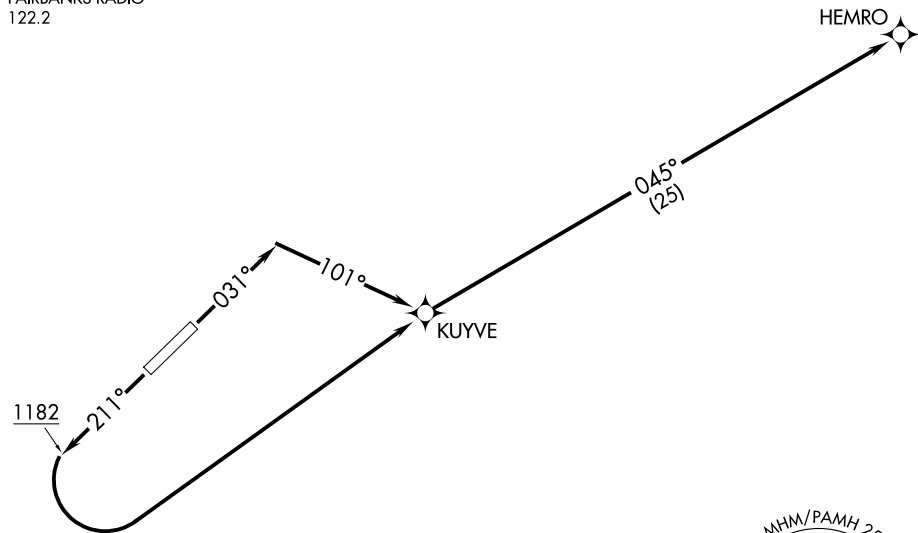
AL-1224 (FAA)

MINCHUMINA (MHM) (PAMH)  
MINCHUMINA, ALASKA

# HEMRO ONE DEPARTURE (OBSTACLE) (RNAV)

RNAV 1 - GPS.

ANCHORAGE CENTER  
120.9 319.2  
AWOS-3P  
135.55  
CTAF  
122.9  
FAIRBANKS RADIO  
122.2



### TAKEOFF MINIMUMS

Rwy 3: Standard with minimum climb of 260'/NM to 2300.

Rwy 21: Standard.

### TAKEOFF OBSTACLE NOTES

Rwy 3: Light poles 10' from DER, 30' right of centerline, 2' AGL/681' MSL.

Tree, vegetation beginning 27' from DER, 99' left of centerline, up to 689' MSL.

Trees beginning 36' from DER, 184' right of centerline, up to 686' MSL.

Trees 122' from DER, 339' left of centerline, 736' MSL.

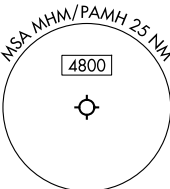
Trees, terrain beginning 144' from DER, 209' left of centerline, up to 764' MSL.

Rwy 21: Trees, light poles, pole beginning 2' from DER, 30' left of centerline, up to 713' MSL.

Trees beginning 13' from DER, 209' right of centerline, up to 716' MSL.

Trees beginning 341' from DER, 440' right of centerline, up to 719' MSL.

Trees beginning 399' from DER, 301' right of centerline, up to 742' MSL.



NOTE: Chart not to scale.

### DEPARTURE ROUTE DESCRIPTION

TAKEOFF RUNWAY 3: Climb on heading 031° to intercept course 101° to KUYVE, thence. . . .

TAKEOFF RUNWAY 21: Climb on heading 211° to 1182, then left turn direct KUYVE, thence. . . .

. . . . on track 045° to HEMRO, then as assigned by air traffic control.

HEMRO ONE DEPARTURE (OBSTACLE) (RNAV)  
(HEMRO1.HEMRO) 02OCT25

MINCHUMINA, ALASKA  
MINCHUMINA (MHM) (PAMH)

AK, 14 MAY 2026 to 09 JUL 2026

AK, 14 MAY 2026 to 09 JUL 2026