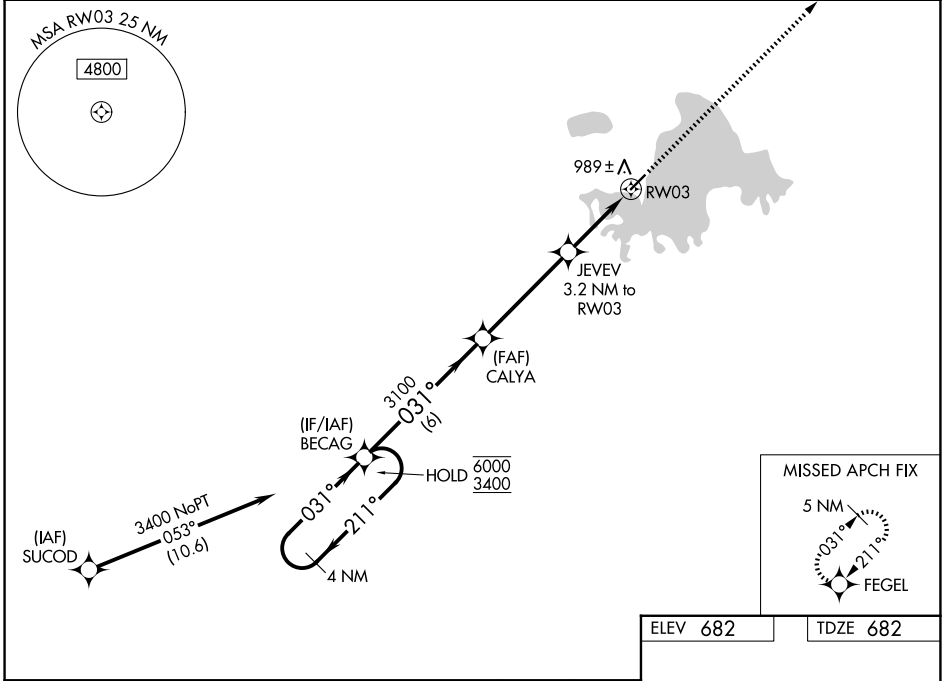


WAAS CH 77647 W03A	APP CRS 031°	Rwy Ldg 4184 TDZE 682 Apt Elev 682
--	------------------------	---

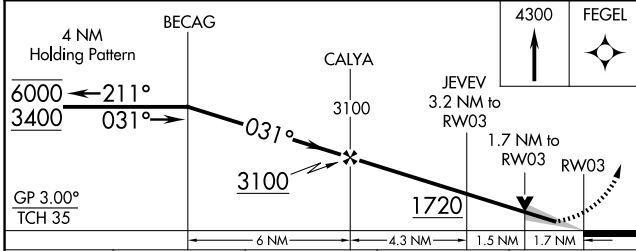
RNAV (GPS) RWY 3

MINCHUMINA (MHM) (P.A.M.H)

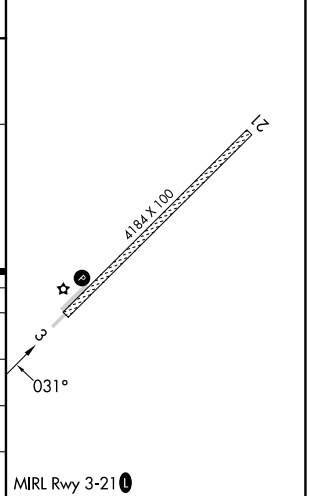
RNP APCH - GPS.		MISSED APPROACH: Climb to 4300 direct FEGEL and hold, continue climb-in-hold to 4300.	
<p>Circling NA northwest of Rwy 3-21. -36°C</p>			
AWOS-3P 135.55	ANCHORAGE CENTER 120.9 319.2	FAIRBANKS RADIO 122.2	CTAF 122.90



ELEV 682	TDZE 682
----------	----------



CATEGORY	A	B	C	D
LPV DA	932-1 250 (300-1)			
LNAV/VNAV DA	1150-1 $\frac{3}{8}$ 468 (500-1 $\frac{3}{8}$)			
LNAV MDA	1240-1 558 (600-1)	1240-1 $\frac{5}{8}$ 558 (600-1 $\frac{5}{8}$)		
CIRCLING	1240-1 558 (600-1)	1460-2 $\frac{1}{4}$ 778 (800-2 $\frac{1}{4}$)	1460-2 $\frac{1}{2}$ 778 (800-2 $\frac{1}{2}$)	



AK, 14 MAY 2026 to 09 JUL 2026

AK, 14 MAY 2026 to 09 JUL 2026