

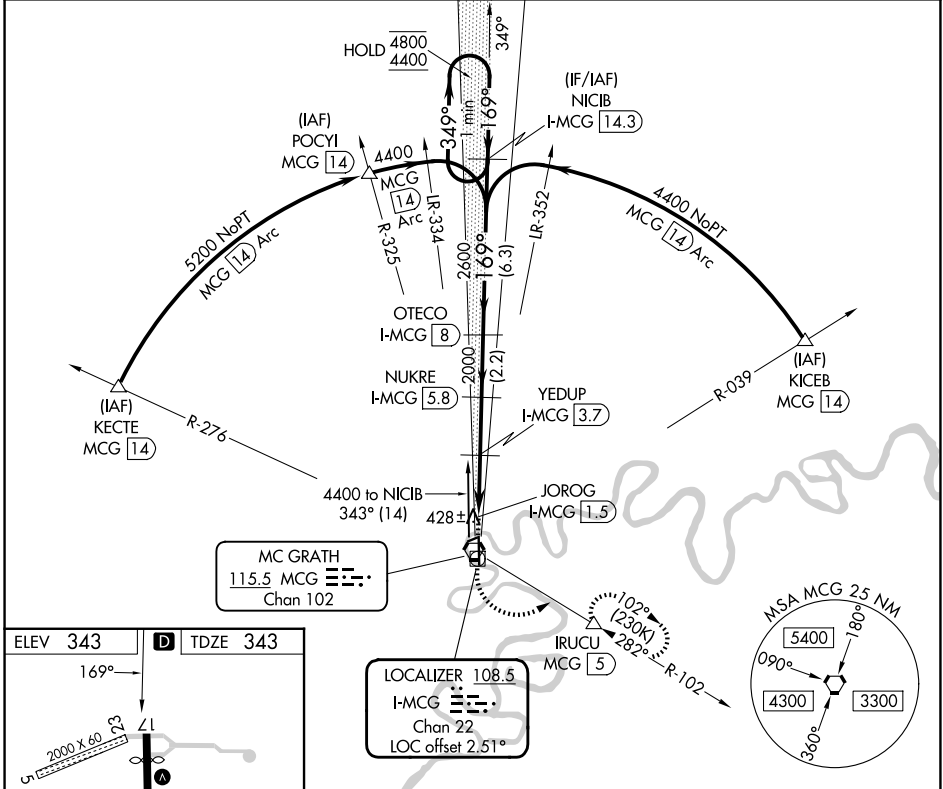
LOC/DME I-MCG 108.5 Chan 22	APP CRS 169°	Rwy Ldg TDZE 343 Apt Elev 343
---	------------------------	---

LOC RWY 17
MC GRATH (MCG)(PAMC)

DME required.
 When local altimeter setting not received, procedure NA.
 Circling NA for Cat D west of Rwy 17-35.
 -45°C

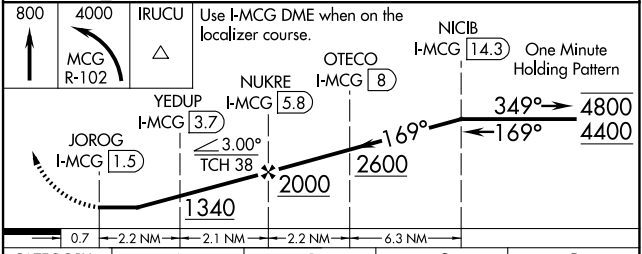
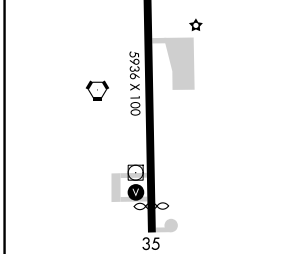
MISSED APPROACH: Climb to 800 then climbing left turn to 4000 on MCG VORTAC R-102 to IRUCU/MCG 5 DME and hold, continue climb-in-hold to 4000.

ASOS 135.65	ANCHORAGE CENTER 128.1 353.8	MCGRATH RADIO 123.6 (CTAF)
-----------------------	--	--------------------------------------



AK, 14 MAY 2026 to 09 JUL 2026

AK, 14 MAY 2026 to 09 JUL 2026



CATEGORY	A	B	C	D
S-17	680-1 337 (400-1)			
CIRCLING	820-1	477 (500-1)	1460-3 1117 (1200-3)	1620-3 1277 (1300-3)