

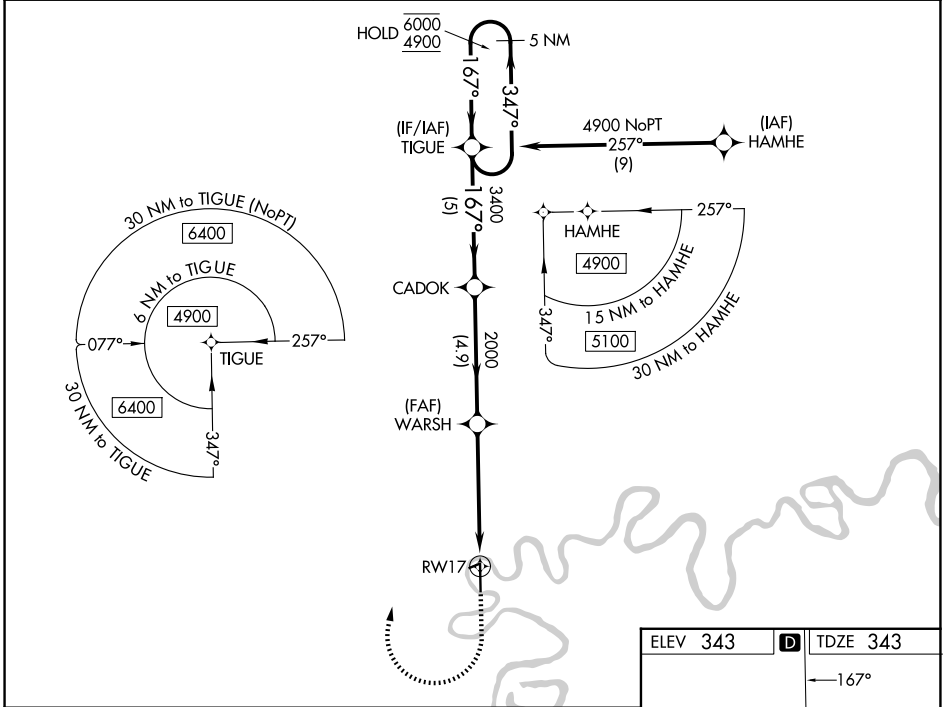
WAAS CH 90226 W17A	APP CRS 167°	Rwy Ldg 4843 TDZE 343 Apt Elev 343
--	------------------------	---

RNAV (GPS) RWY 17

MC GRATH (MCG) (PAMC)

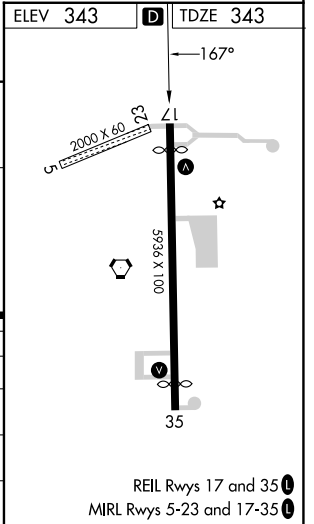
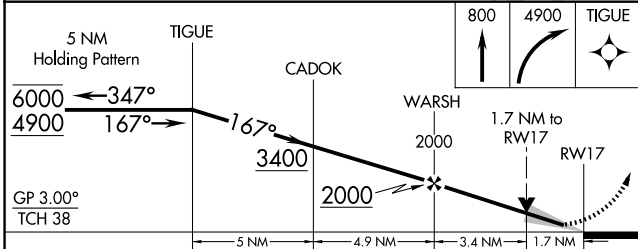
RNP APCH - GPS.	<p>⚠ Circling NA for Cat D west of Rwy 17-35. For uncompensated Baro-VNAV systems, LNAV/VNAV NA below -21°C or above 54°C. When local altimeter setting not received, procedure NA.</p>	<p>MISSED APPROACH: (Do not exceed 190K until TIGUE) Climb to 800 then climbing right turn to 4900 direct TIGUE and hold, continue climb-in-hold.</p>
-----------------	--	---

ASOS 135.65	ANCHORAGE CENTER 128.1 353.8	MCGRATH RADIO 123.6 (CTAF) 0
-----------------------	--	--



AK, 14 MAY 2026 to 09 JUL 2026

AK, 14 MAY 2026 to 09 JUL 2026



CATEGORY	A	B	C	D
LPV DA	593-1 250 (300-1)			
LNAV/VNAV DA	857-1 514 (600-1)	857-1 5/8 514 (600-1 5/8)		
LNAV MDA	920-1 577 (600-1)		920-1 5/8 577 (600-1 5/8)	
CIRCLING	920-1 577 (600-1)		1460-3 1117 (1200-3)	1620-3 1277 (1300-3)