

APP CRS	Rwy Ldg	N/A
290°	TDZE	N/A
	Apt Elev	343

# RNAV (GPS)-A

MC GRATH (MCG) (PAMC)

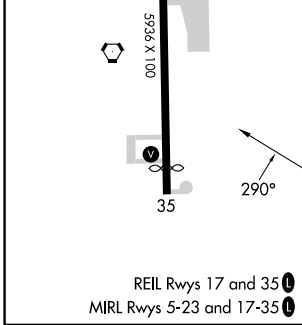
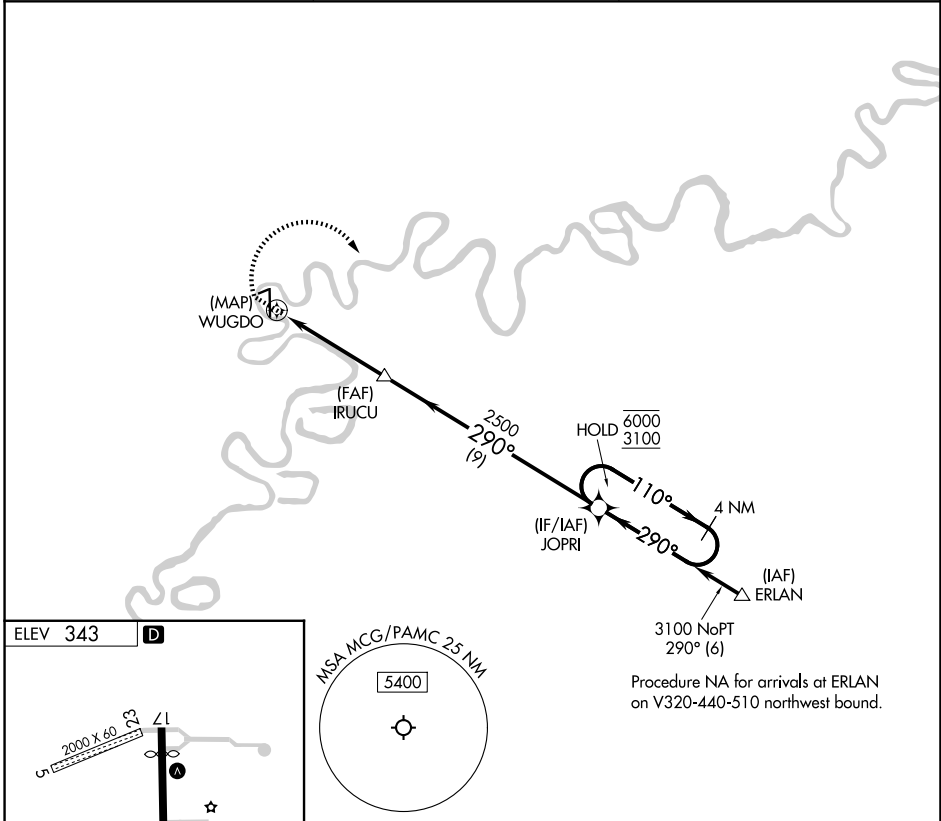
RNP APCH - GPS.

When local altimeter setting not received, procedure NA.  
Circling NA for Cat D west of Rwy 17.

-45°C

MISSED APPROACH: Climb to 800 then climbing right turn to 3100 direct JOPRI and hold.

ASOS <b>135.65</b>	ANCHORAGE CENTER <b>128.1 353.8</b>	MCGRATH RADIO <b>123.6 (CTAF) 0</b>
-----------------------	--	--



800	3100	JOPRI	JOPRI
↑	↻	✦	4 NM Holding Pattern
IRUCU		WUGDO	
2500		290°	
4.5 NM		9 NM	
CATEGORY		A	B
CIRCLING		940-1	597 (600-1)
		C	D
		1460-3	1620-3
		1117 (1200-3)	1277 (1300-3)

AK, 14 MAY 2026 to 09 JUL 2026

AK, 14 MAY 2026 to 09 JUL 2026