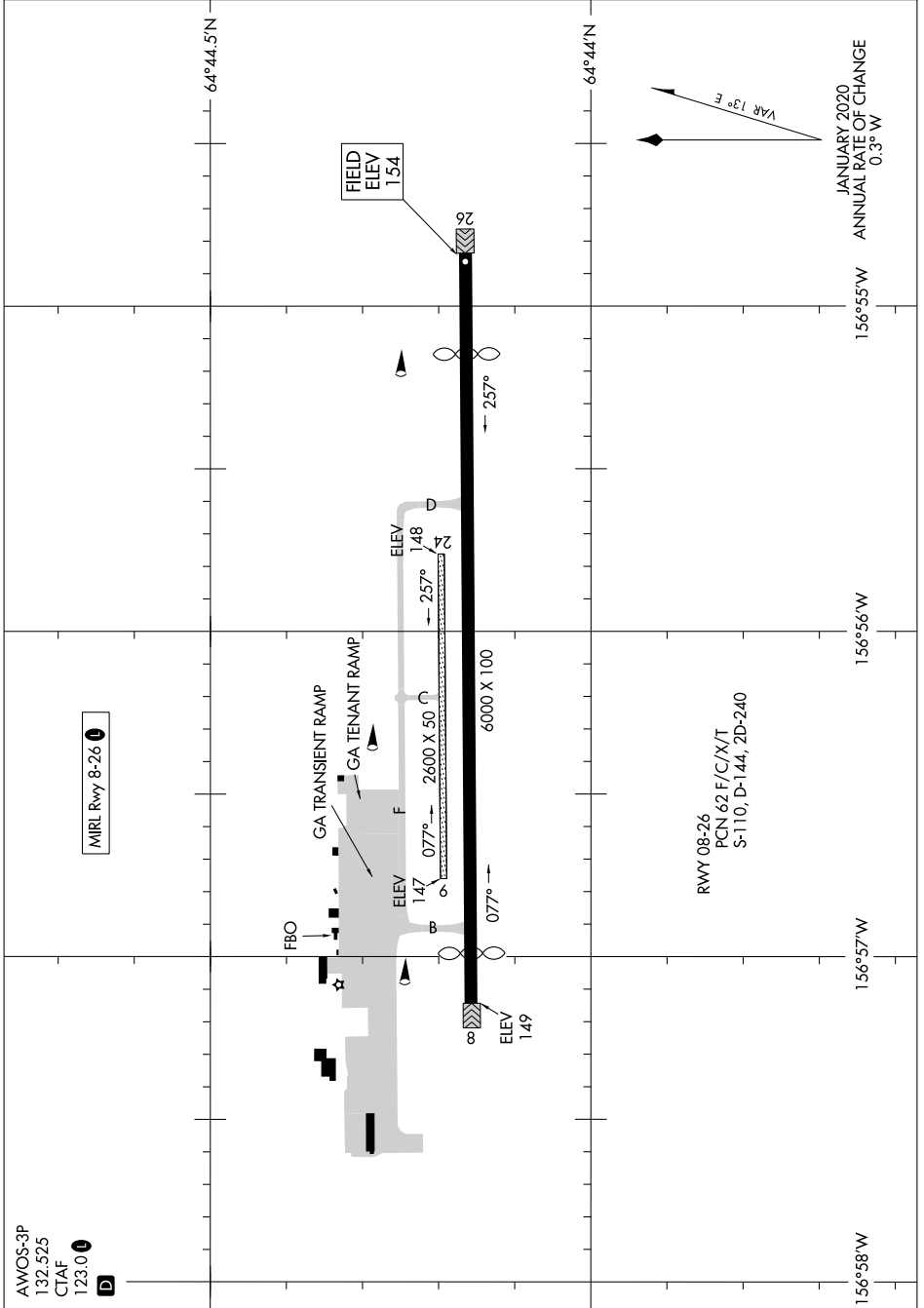


AL-1229 (FAA)

AK, 14 MAY 2026 to 09 JUL 2026



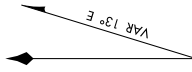
AWOS-3P
132.525
CTAF
123.0

MIRL Rwy 8-26

FIELD
ELEV
154

RWY 08-26
PCN 62 F/C/X/T
S-110, D-144, 2D-240

JANUARY 2020
ANNUAL RATE OF CHANGE
0.3° W



AK, 14 MAY 2026 to 09 JUL 2026