

WAAS CH 77707 W26A	APP CRS 257°	Rwy Ldg 5200 TDZE 153 Apt Elev 154
--	------------------------	---

RNAV (GPS) RWY 26

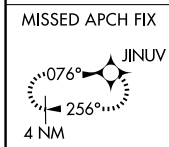
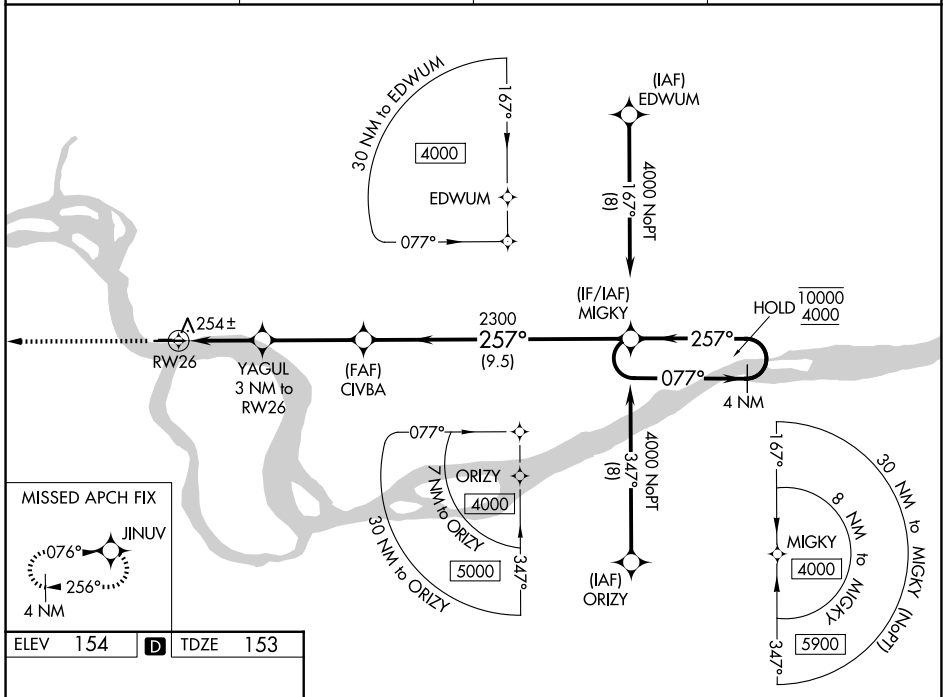
EDWARD G PITKA SR (GAL)(PAGA)

RNP APCH - GPS.

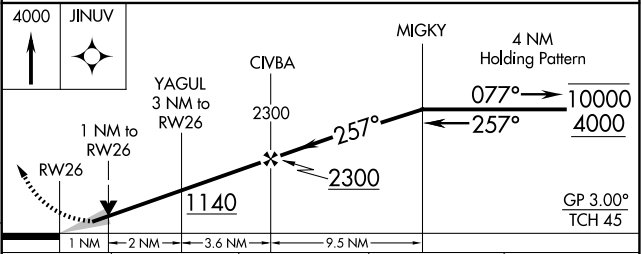
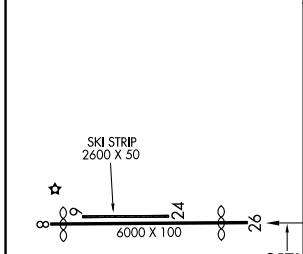
⚠ For uncompensated Baro-VNAV systems, LNAV/VNAV NA below -19°C or above 54°C.

MISSED APPROACH: Climb to 4000 direct JINUV and hold, continue climb-in-hold to 4000.

AWOS-3P 132.525	ANCHORAGE CENTER 127.0 290.2	FAIRBANKS RADIO 122.2	CTAF 123.0
---------------------------	--	---------------------------------	----------------------



ELEV 154	D	TDZE 153
----------	----------	----------



CATEGORY	A	B	C	D
LPV DA		403-1	250 (300-1)	
LNAV/VNAV DA		415-1	262 (300-1)	
LNAV MDA		520-1	367 (400-1)	
CIRCLING	560-1 406 (500-1)	620-1 466 (500-1)	620-1½ 466 (500-1½)	760-2 606 (700-2)

AK, 14 MAY 2026 to 09 JUL 2026

AK, 14 MAY 2026 to 09 JUL 2026