

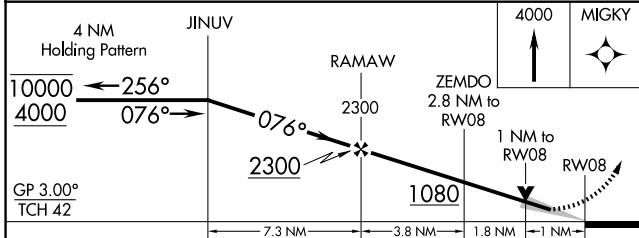
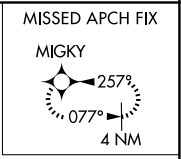
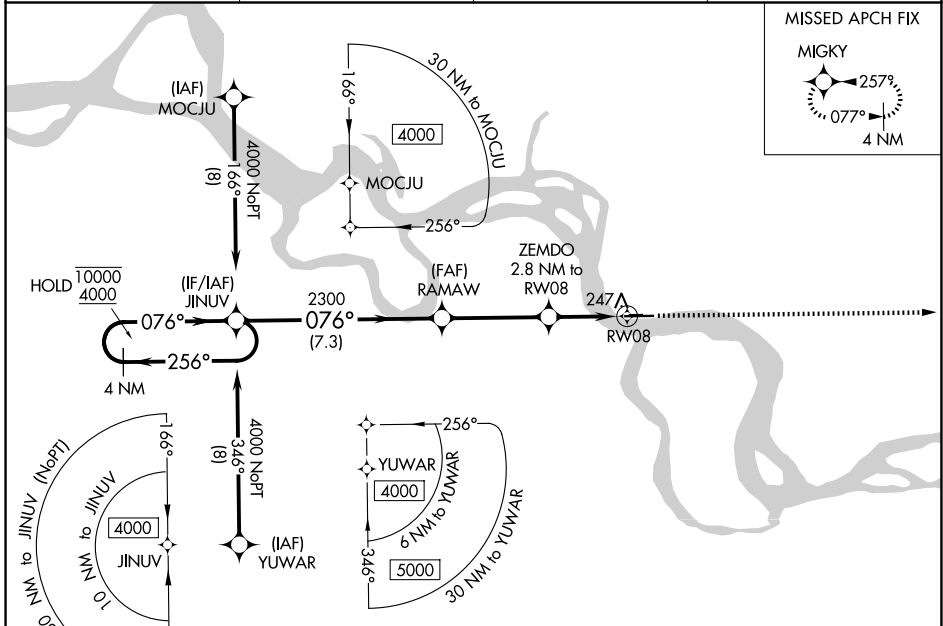
WAAS CH 86907 W08A	APP CRS 076°	Rwy Ldg 5600 TDZE 152 Apt Elev 154
--	------------------------	---

RNAV (GPS) RWY 8

EDWARD G PITKA SR (GAL)(PAGA)

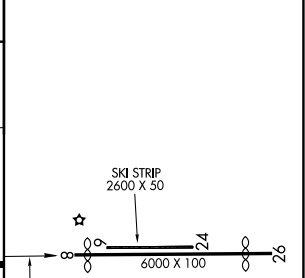
RNP APCH - GPS.	MISSED APPROACH: Climb to 4000 direct MIGKY and hold, continue climb-in-hold to 4000.
For uncompensated Baro-VNAV systems, LNAV/VNAV NA below -20°C or above 54°C.	

AWOS-3P 132.525	ANCHORAGE CENTER 127.0 290.2	FAIRBANKS RADIO 122.2	CTAF 123.0
---------------------------	--	---------------------------------	----------------------



ELEV 154	D TDZE 152
----------	-------------------

CATEGORY	A	B	C	D
LPV DA		402-1	250 (300-1)	
LNAV/VNAV DA		410-1	258 (300-1)	
LNAV MDA		500-1	348 (400-1)	
CIRCLING	560-1 406 (500-1)	620-1 466 (500-1)	620-1½ 466 (500-1½)	760-2 606 (700-2)



MIRL Rwy 8-26

AK, 14 MAY 2026 to 09 JUL 2026

AK, 14 MAY 2026 to 09 JUL 2026