

GALENA, ALASKA

AL-1229 (FAA)

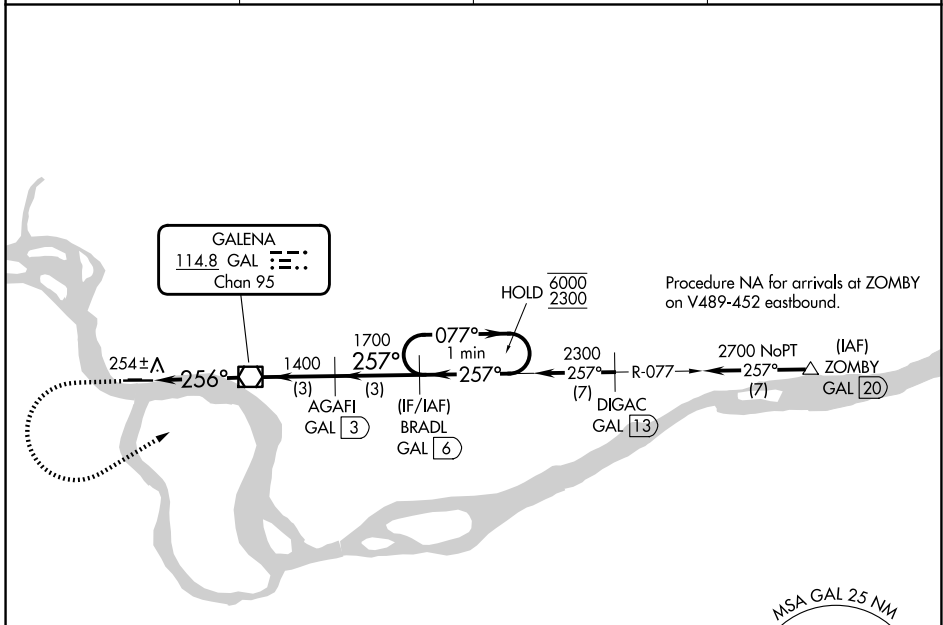
25275

VOR/DME GAL 114.8 Chan 95	APP CRS 256°	Rwy Ldg TDZE Apt Elev	5200 153 154
---	------------------------	-----------------------------	---

VOR RWY 26

EDWARD G PITKA SR (GAL)(PAGA)

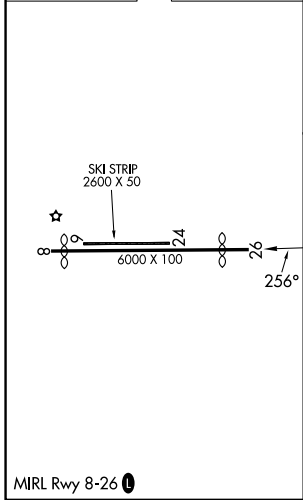
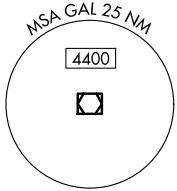
DME required.		MISSED APPROACH: Climb to 600 then climbing left turn to 2300 on heading 047° and GAL VOR/DME R-077 to BRADL/6 DME and hold.	
AWOS-3P 132.525	ANCHORAGE CENTER 127.0 290.2	FAIRBANKS RADIO 122.2	CTAF 123.0



AK, 14 MAY 2026 to 09 JUL 2026

AK, 14 MAY 2026 to 09 JUL 2026

ELEV 154	D	TDZE 153
----------	----------	----------



600	2300	GAL R-077	BRADL GAL 6	AGAFI GAL 3	BRADL GAL 6	One Minute Holding Pattern
hdg 047°						
		GAL 2.7	GAL VOR/DME 3.06° TCH 60			
		GAL 3.7				
			1400	1700		
		0.9	2.7 NM	3 NM	3 NM	
CATEGORY	A	B	C	D		
S-26	520-1 367 (400-1)					
CIRCLING	560-1 406 (500-1)	620-1 466 (500-1)	620-1½ 466 (500-1½)	740-2 586 (600-2)		

GALENA, ALASKA
Orig 05OCT23

EDWARD G PITKA SR (GAL)(PAGA)

64°44'N-156°56'W

VOR RWY 26